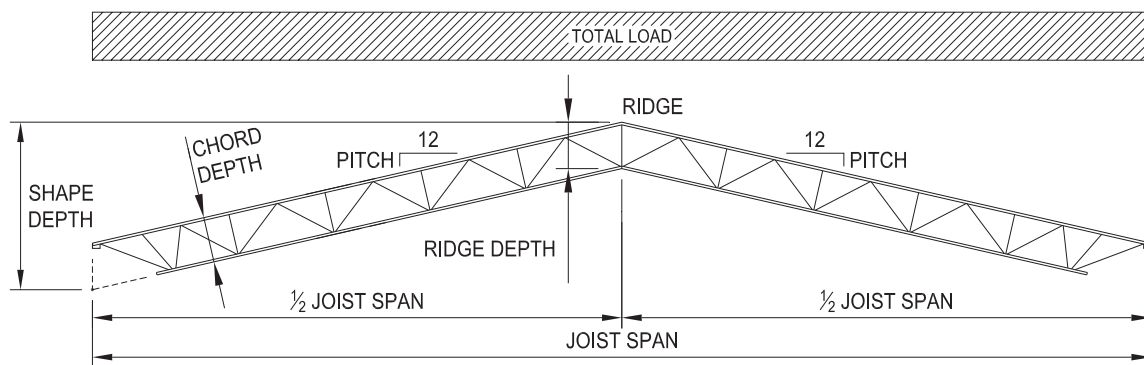


SCISSOR JOIST (SPSC) TABLES

The following weight tables are representative of SP-Series joist designs for Scissor Joists with parameters shown in the diagram below. The maximum allowable Live Load deflection is $L/240$ for a Live Load equal to 75 percent of the Total Load listed in the table. The tables also give bridging requirements per Section 904.5(d), the required seat depth for the given profile, as well as the estimated self-weight in pounds per linear foot. This catalog provides two design examples for reference and clarification on design issues. The following tables are not representative of any limits or constraints on design or constructability by NMBS.

The SP-Series Scissor joists in the following tables are designed assuming pinned-roller supports. If this design results in a predicted approximate horizontal deflection, δ_x , greater than two inches at the roller support, the approximate weight is flagged with the notation, $\delta_x > 2$. The specifying professional should do further investigation into the actual horizontal deflection and consider alternatives as explained in HORIZONTAL REACTIONS on page 10. For further information, please contact your nearest NMBS representative or visit www.newmill.com.

ALL TABLES ARE BASED ON ASD



SCISSOR JOIST (SPSC)



SCISSOR JOIST (SPSC) TABLES

| Span ft | Chord Depth in | Ridge Depth in | Top Chord Pitch in/ft | Shape Depth in | Top Chord Uniform Load - Pounds per Linear Foot (plf) (ASD) | | | | | | | | | | |
|------------|----------------------|----------------------|--------------------------------|----------------------|---|-----|-----|-----|-----|-----|-----|-----|-----|-----|-----|
| | | | | | 300 | 350 | 400 | 450 | 500 | 550 | 600 | 650 | 700 | 750 | 800 |
| | | | | | Joist Self-Weight - Pounds per Linear Foot (plf) | | | | | | | | | | |
| 10 | 10 | 10.0 | 0.500 | 13 | 7 | 7 | 7 | 7 | 7 | 7 | 7 | 7 | 7 | 7 | 7 |
| 10 | 10 | 10.0 | 0.750 | 14 | 7 | 7 | 7 | 7 | 7 | 7 | 7 | 7 | 7 | 7 | 7 |
| 10 | 10 | 10.0 | 1.000 | 15 | 7 | 7 | 7 | 7 | 7 | 7 | 7 | 7 | 7 | 7 | 7 |
| 10 | 10 | 10.1 | 1.500 | 18 | 7 | 7 | 7 | 7 | 7 | 7 | 7 | 7 | 7 | 7 | 7 |
| 10 | 10 | 10.3 | 3.000 | 25 | 8 | 8 | 8 | 8 | 8 | 8 | 8 | 8 | 9 | 9 | 9 |
| 10 | 10 | 11.2 | 6.000 | 41 | 10 | 10 | 10 | 10 | 10 | 10 | 10 | 10 | 10 | 10 | 10 |
| 10 | 14 | 14.0 | 0.500 | 17 | 7 | 7 | 7 | 7 | 7 | 7 | 7 | 7 | 7 | 7 | 7 |
| 10 | 14 | 14.0 | 0.750 | 18 | 7 | 7 | 7 | 7 | 7 | 7 | 7 | 7 | 7 | 7 | 7 |
| 10 | 14 | 14.0 | 1.000 | 19 | 7 | 7 | 7 | 7 | 7 | 7 | 7 | 7 | 7 | 7 | 7 |
| 10 | 14 | 14.1 | 1.500 | 22 | 7 | 7 | 7 | 7 | 7 | 7 | 7 | 7 | 7 | 7 | 7 |
| 10 | 14 | 14.4 | 3.000 | 29 | 7 | 7 | 7 | 7 | 7 | 7 | 7 | 7 | 7 | 7 | 8 |
| 10 | 14 | 15.7 | 6.000 | 46 | 8 | 8 | 8 | 8 | 8 | 8 | 8 | 8 | 8 | 8 | 8 |
| 10 | 18 | 18.0 | 0.500 | 21 | 7 | 7 | 7 | 7 | 7 | 7 | 7 | 7 | 7 | 7 | 7 |
| 10 | 18 | 18.0 | 0.750 | 22 | 7 | 7 | 7 | 7 | 7 | 7 | 7 | 7 | 7 | 7 | 7 |
| 10 | 18 | 18.1 | 1.000 | 23 | 7 | 7 | 7 | 7 | 7 | 7 | 7 | 7 | 7 | 7 | 7 |
| 10 | 18 | 18.1 | 1.500 | 26 | 7 | 7 | 7 | 7 | 7 | 7 | 7 | 7 | 7 | 7 | 7 |
| 10 | 18 | 18.6 | 3.000 | 34 | 7 | 7 | 7 | 7 | 7 | 7 | 7 | 7 | 7 | 7 | 7 |
| 10 | 18 | 20.1 | 6.000 | 50 | 9 | 9 | 9 | 9 | 9 | 9 | 9 | 10 | 10 | 10 | 10 |
| 10 | 22 | 22.0 | 0.500 | 25 | 7 | 7 | 7 | 7 | 7 | 7 | 7 | 7 | 7 | 7 | 7 |
| 10 | 22 | 22.0 | 0.750 | 26 | 7 | 7 | 7 | 7 | 7 | 7 | 7 | 7 | 7 | 7 | 7 |
| 10 | 22 | 22.1 | 1.000 | 27 | 7 | 7 | 7 | 7 | 7 | 7 | 7 | 7 | 7 | 7 | 7 |
| 10 | 22 | 22.2 | 1.500 | 30 | 7 | 7 | 7 | 7 | 7 | 7 | 7 | 7 | 7 | 7 | 7 |
| 10 | 22 | 22.7 | 3.000 | 38 | 7 | 7 | 7 | 7 | 7 | 7 | 7 | 7 | 7 | 7 | 8 |
| 10 | 22 | 24.6 | 6.000 | 55 | 8 | 8 | 8 | 8 | 8 | 8 | 9 | 9 | 9 | 9 | 10 |
| 10 | 26 | 26.0 | 0.500 | 29 | 7 | 7 | 7 | 7 | 7 | 7 | 7 | 7 | 7 | 7 | 7 |
| 10 | 26 | 26.1 | 0.750 | 30 | 7 | 7 | 7 | 7 | 7 | 7 | 7 | 7 | 7 | 7 | 7 |
| 10 | 26 | 26.1 | 1.000 | 31 | 7 | 7 | 7 | 7 | 7 | 7 | 7 | 7 | 7 | 7 | 7 |
| 10 | 26 | 26.2 | 1.500 | 34 | 7 | 7 | 7 | 7 | 7 | 7 | 7 | 7 | 7 | 7 | 7 |
| 10 | 26 | 26.8 | 3.000 | 42 | 8 | 8 | 8 | 8 | 8 | 8 | 8 | 8 | 8 | 8 | 8 |
| 10 | 26 | 29.1 | 6.000 | 59 | 8 | 8 | 8 | 8 | 8 | 8 | 8 | 8 | 8 | 9 | 9 |
| 10 | 30 | 30.0 | 0.500 | 33 | 7 | 7 | 7 | 7 | 7 | 7 | 7 | 7 | 7 | 7 | 7 |
| 10 | 30 | 30.1 | 0.750 | 34 | 7 | 7 | 7 | 7 | 7 | 7 | 7 | 7 | 7 | 7 | 7 |
| 10 | 30 | 30.1 | 1.000 | 35 | 7 | 7 | 7 | 7 | 7 | 7 | 7 | 7 | 7 | 7 | 7 |
| 10 | 30 | 30.2 | 1.500 | 38 | 7 | 7 | 7 | 7 | 7 | 7 | 7 | 7 | 7 | 7 | 7 |
| 10 | 30 | 30.9 | 3.000 | 46 | 7 | 7 | 7 | 7 | 7 | 7 | 7 | 7 | 7 | 7 | 7 |
| 10 | 30 | 33.5 | 6.000 | 64 | 8 | 8 | 8 | 8 | 8 | 8 | 8 | 8 | 8 | 9 | 9 |
| 10 | 34 | 34.0 | 0.500 | 37 | 7 | 7 | 7 | 7 | 7 | 7 | 7 | 7 | 7 | 7 | 7 |
| 10 | 34 | 34.1 | 0.750 | 38 | 7 | 7 | 7 | 7 | 7 | 7 | 7 | 7 | 7 | 7 | 7 |
| 10 | 34 | 34.1 | 1.000 | 39 | 7 | 7 | 7 | 7 | 7 | 7 | 7 | 7 | 7 | 7 | 7 |
| 10 | 34 | 34.3 | 1.500 | 42 | 7 | 7 | 7 | 7 | 7 | 7 | 7 | 7 | 7 | 7 | 7 |
| 10 | 34 | 35.0 | 3.000 | 50 | 7 | 7 | 7 | 7 | 7 | 7 | 7 | 7 | 7 | 7 | 8 |
| 10 | 34 | 38.0 | 6.000 | 68 | 8 | 8 | 8 | 8 | 8 | 8 | 9 | 9 | 9 | 9 | 10 |
| 10 | 38 | 38.0 | 0.500 | 41 | 7 | 7 | 7 | 7 | 7 | 7 | 7 | 8 | 8 | 8 | 8 |
| 10 | 38 | 38.1 | 0.750 | 42 | 7 | 7 | 7 | 7 | 7 | 7 | 7 | 8 | 8 | 8 | 8 |
| 10 | 38 | 38.1 | 1.000 | 43 | 6 | 7 | 7 | 7 | 7 | 7 | 7 | 8 | 8 | 8 | 8 |
| 10 | 38 | 38.3 | 1.500 | 46 | 7 | 7 | 7 | 7 | 7 | 7 | 8 | 8 | 8 | 8 | 8 |
| 10 | 38 | 39.2 | 3.000 | 54 | 7 | 7 | 7 | 7 | 8 | 8 | 8 | 8 | 9 | 9 | 10 |
| 10 | 38 | 42.5 | 6.000 | 72 | 8 | 8 | 9 | 9 | 10 | 10 | 11 | 11 | 11 | 12 | 12 |
| 10 | 42 | 42.0 | 0.500 | 45 | 7 | 7 | 7 | 7 | 7 | 7 | 8 | 8 | 8 | 8 | 9 |
| 10 | 42 | 42.1 | 0.750 | 46 | 7 | 7 | 7 | 7 | 7 | 7 | 8 | 8 | 8 | 8 | 9 |
| 10 | 42 | 42.1 | 1.000 | 47 | 7 | 7 | 7 | 7 | 7 | 8 | 8 | 8 | 8 | 8 | 9 |
| 10 | 42 | 42.3 | 1.500 | 50 | 7 | 7 | 7 | 7 | 7 | 8 | 8 | 8 | 8 | 9 | 9 |
| 10 | 42 | 43.3 | 3.000 | 58 | 7 | 7 | 7 | 8 | 8 | 8 | 8 | 9 | 9 | 9 | 10 |
| 10 | 42 | 47.0 | 6.000 | 77 | 9 | 9 | 9 | 10 | 10 | 11 | 11 | 12 | 12 | 12 | 12 |
| 10 | 46 | 46.0 | 0.500 | 49 | 7 | 7 | 7 | 7 | 7 | 8 | 8 | 8 | 8 | 8 | 9 |
| 10 | 46 | 46.1 | 0.750 | 50 | 7 | 7 | 7 | 7 | 7 | 8 | 8 | 8 | 8 | 8 | 9 |
| 10 | 46 | 46.2 | 1.000 | 51 | 7 | 7 | 7 | 7 | 7 | 8 | 8 | 8 | 8 | 9 | 9 |
| 10 | 46 | 46.4 | 1.500 | 54 | 7 | 7 | 7 | 7 | 8 | 8 | 8 | 8 | 9 | 9 | 9 |
| 10 | 46 | 47.4 | 3.000 | 62 | 8 | 8 | 8 | 8 | 9 | 9 | 9 | 10 | 10 | 10 | 10 |
| 10 | 46 | 51.4 | 6.000 | 81 | 10 | 10 | 10 | 11 | 11 | 12 | 12 | 13 | 13 | 13 | 14 |

X - Bridging Requirements - Reference SP-Series Specification **Section 904.5 BRIDGING** on page 92

| | | | | | | | | | |
|-------|--------|--------|--------|--------|--------|--------|--------|--------|---------|
| 1 row | 2 rows | 3 rows | 4 rows | 5 rows | 6 rows | 7 rows | 8 rows | 9 rows | 10 rows |
|-------|--------|--------|--------|--------|--------|--------|--------|--------|---------|

Bearing Seat Depth - Profiles to the right of a colored line have a seat depth indicated in the chart below

| | | | |
|------------|-----|-----|--------------|
| Minimum 5" | 7½" | 10" | Maximum 12½" |
|------------|-----|-----|--------------|

Horizontal Deflection - Joist designs marked with the note ' $\delta_x > 2$ ' have a horizontal slip greater than 2". (Reference page 10)

SCISSOR JOIST (SPSC) TABLES

| Span ft | Chord Depth in | Ridge Depth in | Top Chord Pitch in/ft | Shape Depth in | Top Chord Uniform Load - Pounds per Linear Foot (plf) (ASD) | | | | | | | | | | |
|------------|----------------------|----------------------|--------------------------------|----------------------|---|-----|-----|-----|-----|-----|-----|-----|-----|-----|-----|
| | | | | | 300 | 350 | 400 | 450 | 500 | 550 | 600 | 650 | 700 | 750 | 800 |
| | | | | | Joist Self-Weight - Pounds per Linear Foot (plf) | | | | | | | | | | |
| 20 | 10 | 10.0 | 0.500 | 15 | 7 | 8 | 10 | 11 | 12 | 13 | 15 | 16 | 19 | 19 | 20 |
| 20 | 10 | 10.0 | 0.750 | 18 | 7 | 8 | 10 | 11 | 12 | 14 | 15 | 16 | 19 | 19 | 20 |
| 20 | 10 | 10.0 | 1.000 | 20 | 7 | 8 | 10 | 11 | 12 | 14 | 15 | 16 | 19 | 20 | 20 |
| 20 | 10 | 10.1 | 1.500 | 25 | 8 | 9 | 10 | 12 | 13 | 14 | 15 | 17 | 19 | 20 | 21 |
| 20 | 10 | 10.3 | 3.000 | 40 | 8 | 10 | 11 | 12 | 13 | 15 | 16 | 19 | 20 | 20 | 21 |
| 20 | 10 | 11.2 | 6.000 | 71 | 9 | 10 | 12 | 14 | 15 | 16 | 18 | 21 | 21 | 23 | 25 |
| 20 | 14 | 14.0 | 0.500 | 19 | 7 | 7 | 7 | 7 | 8 | 9 | 10 | 10 | 11 | 12 | 13 |
| 20 | 14 | 14.0 | 0.750 | 22 | 7 | 7 | 7 | 7 | 8 | 9 | 10 | 10 | 11 | 12 | 13 |
| 20 | 14 | 14.0 | 1.000 | 24 | 7 | 7 | 7 | 7 | 8 | 9 | 10 | 10 | 11 | 12 | 13 |
| 20 | 14 | 14.1 | 1.500 | 29 | 7 | 7 | 7 | 7 | 8 | 9 | 10 | 10 | 11 | 12 | 13 |
| 20 | 14 | 14.4 | 3.000 | 44 | 7 | 7 | 7 | 8 | 9 | 10 | 10 | 11 | 11 | 13 | 13 |
| 20 | 14 | 15.7 | 6.000 | 76 | 8 | 8 | 9 | 10 | 10 | 11 | 12 | 13 | 14 | 14 | 15 |
| 20 | 18 | 18.0 | 0.500 | 23 | 7 | 7 | 7 | 7 | 7 | 8 | 8 | 9 | 10 | 10 | 11 |
| 20 | 18 | 18.0 | 0.750 | 26 | 7 | 7 | 7 | 7 | 7 | 8 | 9 | 9 | 10 | 10 | 11 |
| 20 | 18 | 18.1 | 1.000 | 28 | 7 | 7 | 7 | 7 | 7 | 8 | 9 | 9 | 10 | 10 | 11 |
| 20 | 18 | 18.1 | 1.500 | 33 | 7 | 7 | 7 | 7 | 7 | 8 | 9 | 9 | 10 | 10 | 11 |
| 20 | 18 | 18.6 | 3.000 | 49 | 7 | 7 | 7 | 8 | 8 | 8 | 9 | 9 | 10 | 11 | 11 |
| 20 | 18 | 20.1 | 6.000 | 80 | 7 | 8 | 8 | 9 | 9 | 10 | 10 | 11 | 11 | 13 | 13 |
| 20 | 22 | 22.0 | 0.500 | 27 | 7 | 7 | 7 | 7 | 7 | 8 | 8 | 8 | 9 | 10 | 10 |
| 20 | 22 | 22.0 | 0.750 | 30 | 7 | 7 | 7 | 7 | 7 | 8 | 8 | 9 | 9 | 10 | 10 |
| 20 | 22 | 22.1 | 1.000 | 32 | 7 | 7 | 7 | 7 | 7 | 8 | 8 | 9 | 9 | 10 | 11 |
| 20 | 22 | 22.2 | 1.500 | 37 | 7 | 7 | 7 | 7 | 7 | 8 | 8 | 9 | 10 | 10 | 11 |
| 20 | 22 | 22.7 | 3.000 | 53 | 8 | 8 | 8 | 8 | 8 | 9 | 10 | 10 | 11 | 11 | 12 |
| 20 | 22 | 24.6 | 6.000 | 85 | 8 | 9 | 9 | 10 | 10 | 10 | 11 | 12 | 13 | 13 | 13 |
| 20 | 26 | 26.0 | 0.500 | 31 | 7 | 7 | 7 | 7 | 8 | 8 | 8 | 9 | 9 | 10 | 10 |
| 20 | 26 | 26.1 | 0.750 | 34 | 7 | 7 | 7 | 7 | 8 | 8 | 8 | 9 | 9 | 9 | 10 |
| 20 | 26 | 26.1 | 1.000 | 36 | 7 | 7 | 7 | 7 | 8 | 8 | 9 | 9 | 10 | 10 | 10 |
| 20 | 26 | 26.2 | 1.500 | 41 | 7 | 7 | 7 | 7 | 8 | 8 | 9 | 9 | 10 | 10 | 11 |
| 20 | 26 | 26.8 | 3.000 | 57 | 7 | 7 | 8 | 8 | 8 | 9 | 9 | 9 | 10 | 11 | 11 |
| 20 | 26 | 29.1 | 6.000 | 89 | 8 | 9 | 9 | 9 | 10 | 10 | 11 | 12 | 12 | 13 | 13 |
| 20 | 30 | 30.0 | 0.500 | 35 | 7 | 7 | 7 | 7 | 8 | 8 | 9 | 9 | 10 | 10 | 11 |
| 20 | 30 | 30.1 | 0.750 | 38 | 7 | 7 | 7 | 7 | 8 | 8 | 9 | 9 | 10 | 10 | 11 |
| 20 | 30 | 30.1 | 1.000 | 40 | 7 | 7 | 7 | 7 | 8 | 8 | 9 | 9 | 10 | 10 | 11 |
| 20 | 30 | 30.2 | 1.500 | 45 | 7 | 7 | 7 | 7 | 8 | 8 | 9 | 9 | 10 | 11 | 11 |
| 20 | 30 | 30.9 | 3.000 | 61 | 7 | 7 | 8 | 8 | 8 | 9 | 10 | 10 | 11 | 12 | 12 |
| 20 | 30 | 33.5 | 6.000 | 94 | 9 | 10 | 10 | 11 | 11 | 12 | 12 | 13 | 14 | 14 | 15 |
| 20 | 34 | 34.0 | 0.500 | 39 | 7 | 7 | 7 | 8 | 8 | 9 | 9 | 9 | 10 | 11 | 11 |
| 20 | 34 | 34.1 | 0.750 | 42 | 7 | 7 | 8 | 8 | 8 | 9 | 9 | 9 | 10 | 10 | 11 |
| 20 | 34 | 34.1 | 1.000 | 44 | 7 | 7 | 8 | 8 | 8 | 9 | 9 | 9 | 10 | 11 | 12 |
| 20 | 34 | 34.3 | 1.500 | 49 | 7 | 8 | 8 | 8 | 8 | 9 | 9 | 10 | 11 | 12 | 12 |
| 20 | 34 | 35.0 | 3.000 | 65 | 8 | 8 | 8 | 8 | 9 | 9 | 10 | 11 | 11 | 12 | 13 |
| 20 | 34 | 38.0 | 6.000 | 98 | 10 | 10 | 11 | 11 | 12 | 12 | 13 | 13 | 15 | 15 | 16 |
| 20 | 38 | 38.0 | 0.500 | 43 | 7 | 7 | 8 | 8 | 9 | 9 | 10 | 10 | 11 | 12 | 12 |
| 20 | 38 | 38.1 | 0.750 | 46 | 7 | 8 | 8 | 8 | 9 | 9 | 9 | 10 | 10 | 11 | 12 |
| 20 | 38 | 38.1 | 1.000 | 48 | 7 | 8 | 8 | 8 | 9 | 9 | 10 | 10 | 12 | 12 | 12 |
| 20 | 38 | 38.3 | 1.500 | 53 | 8 | 8 | 8 | 8 | 9 | 10 | 10 | 10 | 12 | 12 | 12 |
| 20 | 38 | 39.2 | 3.000 | 69 | 8 | 9 | 9 | 9 | 10 | 10 | 11 | 11 | 13 | 13 | 13 |
| 20 | 38 | 42.5 | 6.000 | 102 | 11 | 11 | 12 | 12 | 13 | 14 | 15 | 15 | 16 | 17 | 17 |
| 20 | 42 | 42.0 | 0.500 | 47 | 8 | 8 | 9 | 9 | 9 | 9 | 10 | 11 | 12 | 12 | 12 |
| 20 | 42 | 42.1 | 0.750 | 50 | 8 | 8 | 9 | 9 | 9 | 10 | 10 | 11 | 12 | 13 | 13 |
| 20 | 42 | 42.1 | 1.000 | 52 | 8 | 8 | 9 | 9 | 9 | 10 | 11 | 11 | 12 | 13 | 13 |
| 20 | 42 | 42.3 | 1.500 | 57 | 8 | 9 | 9 | 9 | 10 | 10 | 11 | 11 | 12 | 12 | 12 |
| 20 | 42 | 43.3 | 3.000 | 73 | 8 | 9 | 9 | 10 | 11 | 11 | 12 | 12 | 13 | 13 | 13 |
| 20 | 42 | 47.0 | 6.000 | 107 | 11 | 11 | 12 | 13 | 14 | 14 | 15 | 15 | 15 | 16 | 18 |
| 20 | 46 | 46.0 | 0.500 | 51 | 8 | 9 | 9 | 9 | 10 | 10 | 11 | 11 | 12 | 12 | 13 |
| 20 | 46 | 46.1 | 0.750 | 54 | 8 | 9 | 9 | 9 | 10 | 11 | 11 | 11 | 12 | 13 | 14 |
| 20 | 46 | 46.2 | 1.000 | 56 | 8 | 9 | 9 | 9 | 10 | 11 | 11 | 12 | 12 | 13 | 14 |
| 20 | 46 | 46.4 | 1.500 | 61 | 9 | 9 | 9 | 10 | 11 | 11 | 12 | 12 | 12 | 14 | 14 |
| 20 | 46 | 47.4 | 3.000 | 77 | 9 | 9 | 10 | 11 | 11 | 12 | 12 | 13 | 13 | 15 | 15 |
| 20 | 46 | 51.4 | 6.000 | 111 | 12 | 13 | 13 | 14 | 14 | 15 | 16 | 17 | 18 | 18 | 18 |

X - Bridging Requirements - Reference SP-Series Specification **Section 904.5 BRIDGING** on page 92

| | | | | | | | | | |
|-------|--------|--------|--------|--------|--------|--------|--------|--------|---------|
| 1 row | 2 rows | 3 rows | 4 rows | 5 rows | 6 rows | 7 rows | 8 rows | 9 rows | 10 rows |
|-------|--------|--------|--------|--------|--------|--------|--------|--------|---------|

Bearing Seat Depth - Profiles to the right of a colored line have a seat depth indicated in the chart below

| | | | |
|------------|-----|-----|--------------|
| Minimum 5" | 7½" | 10" | Maximum 12½" |
|------------|-----|-----|--------------|

Horizontal Deflection - Joist designs marked with the note 'δ_x>2' have a horizontal slip greater than 2". (Reference page 10)

SCISSOR JOIST (SPSC) TABLES

| Span ft | Chord Depth in | Ridge Depth in | Top Chord Pitch in/ft | Shape Depth in | Top Chord Uniform Load - Pounds per Linear Foot (plf) (ASD) | | | | | | | | | | |
|------------|----------------------|----------------------|--------------------------------|----------------------|---|-----|-----|-----|-----|-----|-----|-----|-----|-----|-----|
| | | | | | 300 | 350 | 400 | 450 | 500 | 550 | 600 | 650 | 700 | 750 | 800 |
| | | | | | Joist Self-Weight - Pounds per Linear Foot (plf) | | | | | | | | | | |
| 30 | 16 | 16.0 | 0.500 | 24 | 9 | 10 | 12 | 13 | 15 | 16 | 18 | 20 | 21 | 22 | 24 |
| 30 | 16 | 16.0 | 0.750 | 27 | 9 | 10 | 12 | 13 | 15 | 16 | 19 | 20 | 21 | 22 | 24 |
| 30 | 16 | 16.1 | 1.000 | 31 | 9 | 10 | 12 | 13 | 15 | 16 | 19 | 20 | 21 | 23 | 24 |
| 30 | 16 | 16.1 | 1.500 | 39 | 9 | 10 | 12 | 13 | 15 | 17 | 19 | 20 | 21 | 23 | 25 |
| 30 | 16 | 16.5 | 3.000 | 61 | 9 | 11 | 13 | 14 | 16 | 18 | 19 | 21 | 22 | 25 | 26 |
| 30 | 16 | 17.9 | 6.000 | 108 | 11 | 13 | 15 | 17 | 19 | 21 | 23 | 24 | 27 | 29 | 30 |
| 30 | 22 | 22.0 | 0.500 | 30 | 7 | 8 | 9 | 10 | 11 | 13 | 14 | 14 | 16 | 16 | 18 |
| 30 | 22 | 22.0 | 0.750 | 33 | 7 | 8 | 9 | 10 | 11 | 13 | 14 | 14 | 16 | 16 | 18 |
| 30 | 22 | 22.1 | 1.000 | 37 | 7 | 8 | 9 | 10 | 12 | 13 | 14 | 14 | 16 | 17 | 18 |
| 30 | 22 | 22.2 | 1.500 | 45 | 8 | 9 | 9 | 11 | 12 | 13 | 14 | 15 | 16 | 17 | 18 |
| 30 | 22 | 22.7 | 3.000 | 68 | 8 | 9 | 10 | 11 | 12 | 13 | 14 | 16 | 17 | 18 | 19 |
| 30 | 22 | 24.6 | 6.000 | 115 | 9 | 10 | 12 | 13 | 14 | 15 | 16 | 18 | 18 | 20 | 22 |
| 30 | 28 | 28.0 | 0.500 | 36 | 7 | 8 | 9 | 10 | 11 | 12 | 13 | 13 | 14 | 15 | 16 |
| 30 | 28 | 28.1 | 0.750 | 39 | 7 | 8 | 9 | 10 | 11 | 12 | 13 | 13 | 14 | 15 | 16 |
| 30 | 28 | 28.1 | 1.000 | 43 | 7 | 8 | 9 | 10 | 11 | 12 | 13 | 13 | 14 | 16 | 16 |
| 30 | 28 | 28.2 | 1.500 | 51 | 8 | 8 | 9 | 10 | 11 | 12 | 13 | 13 | 15 | 16 | 17 |
| 30 | 28 | 28.9 | 3.000 | 74 | 8 | 9 | 10 | 11 | 12 | 12 | 13 | 15 | 15 | 17 | 17 |
| 30 | 28 | 31.3 | 6.000 | 121 | 9 | 10 | 11 | 12 | 13 | 14 | 15 | 16 | 17 | 18 | 19 |
| 30 | 34 | 34.0 | 0.500 | 42 | 8 | 8 | 9 | 10 | 11 | 11 | 13 | 13 | 14 | 15 | 16 |
| 30 | 34 | 34.1 | 0.750 | 45 | 8 | 8 | 9 | 10 | 11 | 12 | 13 | 14 | 14 | 15 | 16 |
| 30 | 34 | 34.1 | 1.000 | 49 | 8 | 8 | 9 | 10 | 11 | 12 | 13 | 14 | 14 | 16 | 16 |
| 30 | 34 | 34.3 | 1.500 | 57 | 8 | 8 | 9 | 10 | 11 | 12 | 12 | 14 | 14 | 16 | 17 |
| 30 | 34 | 35.0 | 3.000 | 80 | 9 | 10 | 10 | 11 | 12 | 13 | 14 | 15 | 16 | 17 | 18 |
| 30 | 34 | 38.0 | 6.000 | 128 | 11 | 11 | 12 | 14 | 14 | 16 | 16 | 18 | 18 | 20 | 21 |
| 30 | 40 | 40.0 | 0.500 | 48 | 8 | 9 | 10 | 11 | 12 | 12 | 13 | 14 | 15 | 16 | 17 |
| 30 | 40 | 40.1 | 0.750 | 51 | 9 | 9 | 10 | 11 | 12 | 12 | 13 | 14 | 15 | 16 | 17 |
| 30 | 40 | 40.1 | 1.000 | 55 | 9 | 9 | 10 | 11 | 12 | 13 | 13 | 15 | 15 | 17 | 17 |
| 30 | 40 | 40.3 | 1.500 | 63 | 9 | 9 | 10 | 12 | 12 | 13 | 13 | 15 | 15 | 17 | 17 |
| 30 | 40 | 41.2 | 3.000 | 86 | 9 | 10 | 11 | 12 | 13 | 13 | 14 | 16 | 16 | 16 | 18 |
| 30 | 40 | 44.7 | 6.000 | 135 | 12 | 12 | 13 | 14 | 16 | 16 | 17 | 18 | 20 | 20 | 21 |
| 30 | 46 | 46.0 | 0.500 | 54 | 9 | 10 | 10 | 11 | 12 | 12 | 14 | 15 | 15 | 15 | 17 |
| 30 | 46 | 46.1 | 0.750 | 57 | 9 | 10 | 11 | 11 | 12 | 13 | 14 | 15 | 15 | 16 | 17 |
| 30 | 46 | 46.2 | 1.000 | 61 | 9 | 10 | 11 | 11 | 12 | 13 | 14 | 15 | 15 | 16 | 17 |
| 30 | 46 | 46.4 | 1.500 | 69 | 10 | 10 | 11 | 12 | 13 | 13 | 14 | 15 | 16 | 17 | 17 |
| 30 | 46 | 47.4 | 3.000 | 92 | 10 | 11 | 12 | 13 | 13 | 15 | 16 | 17 | 17 | 18 | 20 |
| 30 | 46 | 51.4 | 6.000 | 141 | 14 | 14 | 15 | 15 | 17 | 17 | 18 | 20 | 21 | 21 | 23 |
| 30 | 52 | 52.0 | 0.500 | 60 | 10 | 11 | 12 | 12 | 13 | 14 | 15 | 16 | 17 | 17 | 19 |
| 30 | 52 | 52.1 | 0.750 | 63 | 10 | 11 | 12 | 13 | 13 | 14 | 15 | 16 | 17 | 17 | 19 |
| 30 | 52 | 52.2 | 1.000 | 67 | 10 | 11 | 12 | 13 | 13 | 14 | 15 | 17 | 17 | 18 | 19 |
| 30 | 52 | 52.4 | 1.500 | 75 | 11 | 12 | 12 | 13 | 14 | 14 | 16 | 17 | 17 | 18 | 20 |
| 30 | 52 | 53.6 | 3.000 | 99 | 12 | 12 | 13 | 14 | 16 | 16 | 16 | 18 | 20 | 20 | 21 |
| 30 | 52 | 58.1 | 6.000 | 148 | 17 | 17 | 17 | 17 | 20 | 21 | 21 | 22 | 24 | 25 | 27 |
| 30 | 58 | 58.1 | 0.500 | 66 | 11 | 12 | 13 | 14 | 14 | 16 | 17 | 17 | 18 | 19 | 21 |
| 30 | 58 | 58.1 | 0.750 | 69 | 11 | 12 | 13 | 14 | 15 | 16 | 17 | 17 | 18 | 19 | 21 |
| 30 | 58 | 58.2 | 1.000 | 73 | 11 | 13 | 14 | 14 | 15 | 16 | 17 | 17 | 19 | 21 | 21 |
| 30 | 58 | 58.5 | 1.500 | 81 | 12 | 13 | 14 | 15 | 15 | 17 | 17 | 18 | 20 | 21 | 21 |
| 30 | 58 | 59.8 | 3.000 | 105 | 13 | 14 | 15 | 17 | 17 | 17 | 20 | 20 | 21 | 21 | 23 |
| 30 | 58 | 64.8 | 6.000 | 155 | 20 | 21 | 21 | 21 | 21 | 23 | 25 | 27 | 27 | 29 | 29 |
| 30 | 64 | 64.1 | 0.500 | 72 | 13 | 14 | 15 | 15 | 16 | 16 | 18 | 19 | 19 | 19 | 19 |
| 30 | 64 | 64.1 | 0.750 | 75 | 13 | 14 | 15 | 15 | 16 | 16 | 18 | 19 | 19 | 19 | 20 |
| 30 | 64 | 64.2 | 1.000 | 79 | 14 | 14 | 15 | 17 | 17 | 17 | 19 | 19 | 19 | 19 | 20 |
| 30 | 64 | 64.5 | 1.500 | 87 | 14 | 14 | 15 | 16 | 17 | 18 | 19 | 19 | 19 | 20 | 22 |
| 30 | 64 | 66.0 | 3.000 | 111 | 16 | 16 | 17 | 18 | 19 | 19 | 20 | 21 | 22 | 22 | 24 |
| 30 | 64 | 71.6 | 6.000 | 162 | 21 | 21 | 21 | 21 | 22 | 24 | 25 | 27 | 27 | 27 | 29 |
| 30 | 70 | 70.1 | 0.500 | 78 | 15 | 15 | 16 | 17 | 17 | 19 | 20 | 20 | 20 | 22 | 23 |
| 30 | 70 | 70.1 | 0.750 | 81 | 14 | 14 | 15 | 16 | 17 | 17 | 19 | 19 | 19 | 21 | 23 |
| 30 | 70 | 70.2 | 1.000 | 85 | 15 | 15 | 15 | 16 | 17 | 19 | 19 | 19 | 19 | 21 | 23 |
| 30 | 70 | 70.5 | 1.500 | 93 | 15 | 15 | 16 | 16 | 17 | 19 | 19 | 19 | 20 | 22 | 23 |
| 30 | 70 | 72.2 | 3.000 | 117 | 20 | 20 | 20 | 20 | 20 | 21 | 22 | 24 | 24 | 25 | 26 |
| 30 | 70 | 78.3 | 6.000 | 168 | 21 | 21 | 22 | 27 | 27 | 27 | 27 | 27 | 29 | 31 | 31 |

X - Bridging Requirements - Reference SP-Series Specification **Section 904.5 BRIDGING** on page 92

| | | | | | | | | | |
|-------|--------|--------|--------|--------|--------|--------|--------|--------|---------|
| 1 row | 2 rows | 3 rows | 4 rows | 5 rows | 6 rows | 7 rows | 8 rows | 9 rows | 10 rows |
|-------|--------|--------|--------|--------|--------|--------|--------|--------|---------|

Bearing Seat Depth - Profiles to the right of a colored line have a seat depth indicated in the chart below

| | | | |
|------------|-----|-----|--------------|
| Minimum 5" | 7½" | 10" | Maximum 12½" |
|------------|-----|-----|--------------|

Horizontal Deflection - Joist designs marked with the note ' $\delta_x > 2$ ' have a horizontal slip greater than 2". (Reference page 10)

SCISSOR JOIST (SPSC) TABLES

| Span ft | Chord Depth in | Ridge Depth in | Top Chord Pitch in/ft | Shape Depth in | Top Chord Uniform Load - Pounds per Linear Foot (plf) (ASD) | | | | | | | | | | |
|------------|----------------------|----------------------|--------------------------------|----------------------|---|-----------------------|-----------------------|-----------------------|-----------------------|-----------------------|-----------------------|-----------------------|-----------------------|-----------------------|-----------------------|
| | | | | | 300 | 350 | 400 | 450 | 500 | 550 | 600 | 650 | 700 | 750 | 800 |
| | | | | | Joist Self-Weight - Pounds per Linear Foot (plf) | | | | | | | | | | |
| 40 | 20 | 20.0 | 0.500 | 30 | 13 | 16 | 18 | 20 | 22 | 24 | 27 | 28 | 31 | 33 | 36 |
| 40 | 20 | 20.0 | 0.750 | 35 | 13 | 16 | 18 | 20 | 22 | 24 | 27 | 30 | 31 | 35 | 36 |
| 40 | 20 | 20.1 | 1.000 | 40 | 13 | 16 | 18 | 20 | 22 | 24 | 27 | 30 | 31 | 35 | 36 |
| 40 | 20 | 20.2 | 1.500 | 50 | 13 | 16 | 19 | 20 | 23 | 25 | 27 | 30 | 31 | 35 | 37 |
| 40 | 20 | 20.6 | 3.000 | 81 | 14 | 16 | 19 | 21 | 24 | 26 | 29 | 30 | 33 | 36 | 39 |
| 40 | 20 | 22.4 | 6.000 | 142 | 17 _{δx>2} | 20 _{δx>2} | 22 _{δx>2} | 25 _{δx>2} | 28 _{δx>2} | 31 _{δx>2} | 33 _{δx>2} | 36 _{δx>2} | 40 _{δx>2} | 42 _{δx>2} | 48 _{δx>2} |
| 40 | 28 | 28.0 | 0.500 | 38 | 10 | 12 | 13 | 14 | 16 | 17 | 19 | 20 | 22 | 22 | 24 |
| 40 | 28 | 28.1 | 0.750 | 43 | 10 | 12 | 13 | 14 | 16 | 17 | 19 | 20 | 22 | 22 | 24 |
| 40 | 28 | 28.1 | 1.000 | 48 | 10 | 12 | 13 | 14 | 16 | 17 | 19 | 20 | 21 | 22 | 24 |
| 40 | 28 | 28.2 | 1.500 | 58 | 10 | 12 | 13 | 15 | 16 | 17 | 19 | 20 | 22 | 23 | 24 |
| 40 | 28 | 28.9 | 3.000 | 89 | 11 | 12 | 14 | 16 | 18 | 18 | 20 | 22 | 22 | 24 | 26 |
| 40 | 28 | 31.3 | 6.000 | 151 | 13 | 14 | 16 | 17 | 20 | 20 | 22 | 24 | 27 | 27 | 29 |
| 40 | 36 | 36.0 | 0.500 | 46 | 10 | 11 | 12 | 13 | 15 | 15 | 17 | 18 | 19 | 21 | 21 |
| 40 | 36 | 36.1 | 0.750 | 51 | 10 | 11 | 12 | 13 | 15 | 15 | 17 | 18 | 19 | 21 | 21 |
| 40 | 36 | 36.1 | 1.000 | 56 | 10 | 11 | 12 | 14 | 15 | 16 | 17 | 18 | 19 | 21 | 21 |
| 40 | 36 | 36.3 | 1.500 | 66 | 10 | 11 | 12 | 13 | 15 | 17 | 17 | 18 | 19 | 21 | 21 |
| 40 | 36 | 37.1 | 3.000 | 97 | 10 | 12 | 13 | 14 | 15 | 16 | 18 | 19 | 21 | 22 | 23 |
| 40 | 36 | 40.2 | 6.000 | 160 | 12 | 13 | 15 | 17 | 18 | 19 | 21 | 22 | 24 | 26 | 26 |
| 40 | 44 | 44.0 | 0.500 | 54 | 10 | 12 | 13 | 14 | 15 | 16 | 17 | 18 | 19 | 22 | 22 |
| 40 | 44 | 44.1 | 0.750 | 59 | 10 | 12 | 13 | 14 | 15 | 16 | 17 | 19 | 19 | 22 | 22 |
| 40 | 44 | 44.2 | 1.000 | 64 | 11 | 13 | 13 | 14 | 15 | 17 | 17 | 19 | 20 | 22 | 22 |
| 40 | 44 | 44.3 | 1.500 | 74 | 11 | 13 | 13 | 14 | 15 | 17 | 17 | 19 | 21 | 22 | 22 |
| 40 | 44 | 45.4 | 3.000 | 105 | 12 | 13 | 14 | 15 | 17 | 17 | 19 | 21 | 21 | 22 | 23 |
| 40 | 44 | 49.2 | 6.000 | 169 | 15 | 15 | 17 | 18 | 20 | 21 | 22 | 24 | 26 | 26 | 29 |
| 40 | 52 | 52.0 | 0.500 | 62 | 11 | 12 | 13 | 14 | 15 | 16 | 18 | 19 | 21 | 22 | 22 |
| 40 | 52 | 52.1 | 0.750 | 67 | 12 | 12 | 13 | 14 | 16 | 16 | 18 | 19 | 21 | 22 | 23 |
| 40 | 52 | 52.2 | 1.000 | 72 | 12 | 13 | 13 | 14 | 16 | 16 | 18 | 20 | 21 | 22 | 23 |
| 40 | 52 | 52.4 | 1.500 | 82 | 12 | 13 | 14 | 14 | 16 | 17 | 18 | 20 | 21 | 22 | 23 |
| 40 | 52 | 53.6 | 3.000 | 114 | 13 | 14 | 14 | 16 | 17 | 19 | 20 | 20 | 22 | 24 | 25 |
| 40 | 52 | 58.1 | 6.000 | 178 | 17 | 17 | 18 | 20 | 20 | 22 | 24 | 25 | 26 | 29 | 29 |
| 40 | 60 | 60.1 | 0.500 | 70 | 14 | 15 | 16 | 16 | 18 | 18 | 20 | 21 | 22 | 22 | 24 |
| 40 | 60 | 60.1 | 0.750 | 75 | 14 | 15 | 16 | 17 | 18 | 19 | 21 | 21 | 22 | 23 | 24 |
| 40 | 60 | 60.2 | 1.000 | 80 | 15 | 15 | 17 | 18 | 18 | 19 | 21 | 21 | 22 | 23 | 26 |
| 40 | 60 | 60.5 | 1.500 | 90 | 15 | 16 | 17 | 18 | 19 | 21 | 21 | 21 | 23 | 23 | 26 |
| 40 | 60 | 61.8 | 3.000 | 122 | 16 | 16 | 18 | 19 | 20 | 21 | 21 | 23 | 25 | 27 | 27 |
| 40 | 60 | 67.1 | 6.000 | 187 | 22 | 22 | 22 | 22 | 25 | 25 | 27 | 28 | 29 | 31 | 32 |
| 40 | 68 | 68.1 | 0.500 | 78 | 15 | 16 | 17 | 17 | 19 | 20 | 21 | 22 | 24 | 25 | 26 |
| 40 | 68 | 68.1 | 0.750 | 83 | 15 | 16 | 17 | 17 | 19 | 20 | 21 | 22 | 24 | 25 | 27 |
| 40 | 68 | 68.2 | 1.000 | 88 | 16 | 16 | 17 | 18 | 20 | 21 | 21 | 23 | 25 | 25 | 27 |
| 40 | 68 | 68.5 | 1.500 | 99 | 16 | 16 | 17 | 19 | 20 | 21 | 21 | 23 | 25 | 26 | 28 |
| 40 | 68 | 70.1 | 3.000 | 130 | 18 | 18 | 19 | 21 | 21 | 22 | 24 | 26 | 27 | 28 | 29 |
| 40 | 68 | 76.0 | 6.000 | 196 | 24 | 24 | 25 | 27 | 29 | 30 | 30 | 31 | 33 | 35 | 40 |
| 40 | 76 | 76.1 | 0.500 | 86 | 17 | 17 | 19 | 20 | 22 | 23 | 23 | 24 | 26 | 27 | 29 |
| 40 | 76 | 76.1 | 0.750 | 91 | 17 | 17 | 19 | 20 | 22 | 23 | 23 | 24 | 26 | 28 | 28 |
| 40 | 76 | 76.3 | 1.000 | 96 | 17 | 18 | 19 | 20 | 22 | 23 | 24 | 25 | 26 | 29 | 30 |
| 40 | 76 | 76.6 | 1.500 | 107 | 18 | 19 | 19 | 22 | 22 | 23 | 24 | 26 | 28 | 29 | 30 |
| 40 | 76 | 78.3 | 3.000 | 138 | 21 | 21 | 22 | 22 | 24 | 25 | 27 | 29 | 29 | 29 | 32 |
| 40 | 76 | 85.0 | 6.000 | 205 | 30 | 30 | 30 | 30 | 31 | 31 | 33 | 35 | 41 | 41 | 42 |
| 40 | 84 | 84.1 | 0.500 | 94 | 21 | 21 | 23 | 24 | 24 | 25 | 27 | 27 | 28 | 30 | 30 |
| 40 | 84 | 84.2 | 0.750 | 99 | 21 | 21 | 24 | 24 | 24 | 25 | 27 | 28 | 29 | 30 | 30 |
| 40 | 84 | 84.3 | 1.000 | 104 | 21 | 21 | 23 | 24 | 24 | 27 | 27 | 28 | 29 | 30 | 30 |
| 40 | 84 | 84.7 | 1.500 | 115 | 23 | 23 | 23 | 24 | 25 | 27 | 28 | 29 | 30 | 30 | 31 |
| 40 | 84 | 86.6 | 3.000 | 147 | 23 | 23 | 23 | 26 | 28 | 29 | 29 | 29 | 31 | 33 | 38 |
| 40 | 84 | 93.9 | 6.000 | 214 | 40 | 40 | 41 | 41 | 41 | 41 | 42 | 42 | 42 | 42 | 46 |
| 40 | 92 | 92.1 | 0.500 | 102 | 24 | 24 | 25 | 25 | 26 | 27 | 29 | 30 | 31 | 31 | 32 |
| 40 | 92 | 92.2 | 0.750 | 107 | 24 | 24 | 25 | 26 | 27 | 29 | 29 | 30 | 30 | 32 | 32 |
| 40 | 92 | 92.3 | 1.000 | 112 | 24 | 24 | 24 | 26 | 27 | 29 | 30 | 30 | 30 | 32 | 33 |
| 40 | 92 | 92.7 | 1.500 | 123 | 24 | 24 | 24 | 27 | 29 | 30 | 30 | 30 | 32 | 33 | 34 |
| 40 | 92 | 94.8 | 3.000 | 155 | 29 | 29 | 29 | 29 | 30 | 30 | 31 | 33 | 38 | 38 | 38 |
| 40 | 92 | 102.9 | 6.000 | 223 | 41 | 41 | 41 | 41 | 41 | 41 | 41 | 42 | 46 | 46 | 54 |

X - Bridging Requirements - Reference SP-Series Specification Section 904.5 BRIDGING on page 92

| | | | | | | | | | |
|-------|--------|--------|--------|--------|--------|--------|--------|--------|---------|
| 1 row | 2 rows | 3 rows | 4 rows | 5 rows | 6 rows | 7 rows | 8 rows | 9 rows | 10 rows |
|-------|--------|--------|--------|--------|--------|--------|--------|--------|---------|

Bearing Seat Depth - Profiles to the right of a colored line have a seat depth indicated in the chart below

| | | | |
|------------|-----|-----|--------------|
| Minimum 5" | 7½" | 10" | Maximum 12½" |
|------------|-----|-----|--------------|

Horizontal Deflection - Joist designs marked with the note 'δ_x>2' have a horizontal slip greater than 2". (Reference page 10)

SCISSOR JOIST (SPSC) TABLES

| Span ft | Chord Depth in | Ridge Depth in | Top Chord Pitch in/ft | Shape Depth in | Top Chord Uniform Load - Pounds per Linear Foot (plf) (ASD) | | | | | | | | | | |
|------------|----------------------|----------------------|--------------------------------|----------------------|---|-----------------------|-----------------------|-----------------------|-----------------------|-----------------------|-----------------------|-----------------------|-----------------------|-----------------------|-----------------------|
| | | | | | 300 | 350 | 400 | 450 | 500 | 550 | 600 | 650 | 700 | 750 | 800 |
| | | | | | Joist Self-Weight - Pounds per Linear Foot (plf) | | | | | | | | | | |
| 50 | 26 | 26.0 | 0.500 | 39 | 16 | 18 | 20 | 22 | 25 | 27 | 30 | 31 | 35 | 38 | 40 |
| 50 | 26 | 26.1 | 0.750 | 45 | 16 | 18 | 20 | 22 | 25 | 27 | 30 | 32 | 35 | 38 | 40 |
| 50 | 26 | 26.1 | 1.000 | 51 | 16 | 18 | 20 | 22 | 25 | 27 | 30 | 33 | 35 | 38 | 40 |
| 50 | 26 | 26.2 | 1.500 | 64 | 16 | 18 | 20 | 22 | 25 | 28 | 30 | 33 | 35 | 38 | 44 |
| 50 | 26 | 26.8 | 3.000 | 102 | 16 | 18 | 21 | 24 | 26 | 29 | 32 | 34 | 37 | 41 | 45 |
| 50 | 26 | 29.1 | 6.000 | 179 | 19 _{δx>2} | 21 _{δx>2} | 25 _{δx>2} | 28 _{δx>2} | 32 _{δx>2} | 35 _{δx>2} | 39 _{δx>2} | 40 _{δx>2} | 44 _{δx>2} | 49 _{δx>2} | 54 _{δx>2} |
| 50 | 36 | 36.0 | 0.500 | 49 | 12 | 14 | 16 | 18 | 20 | 22 | 22 | 24 | 27 | 29 | 29 |
| 50 | 36 | 36.1 | 0.750 | 55 | 12 | 14 | 16 | 18 | 20 | 22 | 24 | 24 | 27 | 29 | 29 |
| 50 | 36 | 36.1 | 1.000 | 61 | 12 | 15 | 17 | 18 | 20 | 22 | 24 | 24 | 27 | 29 | 29 |
| 50 | 36 | 36.3 | 1.500 | 74 | 13 | 15 | 17 | 18 | 20 | 22 | 24 | 26 | 27 | 30 | 31 |
| 50 | 36 | 37.1 | 3.000 | 112 | 13 | 15 | 17 | 18 | 21 | 22 | 24 | 26 | 29 | 29 | 31 |
| 50 | 36 | 40.2 | 6.000 | 190 | 16 | 18 | 20 | 22 | 23 _{δx>2} | 25 _{δx>2} | 28 _{δx>2} | 30 _{δx>2} | 33 _{δx>2} | 33 _{δx>2} | 36 _{δx>2} |
| 50 | 46 | 46.0 | 0.500 | 59 | 12 | 14 | 15 | 17 | 18 | 19 | 21 | 21 | 23 | 25 | 25 |
| 50 | 46 | 46.1 | 0.750 | 65 | 12 | 14 | 15 | 17 | 18 | 19 | 21 | 21 | 23 | 25 | 25 |
| 50 | 46 | 46.2 | 1.000 | 71 | 12 | 13 | 15 | 17 | 18 | 19 | 21 | 23 | 23 | 25 | 27 |
| 50 | 46 | 46.4 | 1.500 | 84 | 12 | 13 | 15 | 17 | 19 | 20 | 21 | 23 | 23 | 25 | 27 |
| 50 | 46 | 47.4 | 3.000 | 122 | 13 | 15 | 16 | 18 | 20 | 21 | 23 | 24 | 26 | 27 | 29 |
| 50 | 46 | 51.4 | 6.000 | 201 | 15 | 17 | 19 | 21 | 23 | 25 | 26 | 28 | 30 | 31 | 33 |
| 50 | 56 | 56.0 | 0.500 | 69 | 14 | 15 | 17 | 18 | 19 | 22 | 23 | 24 | 25 | 27 | 29 |
| 50 | 56 | 56.1 | 0.750 | 75 | 14 | 15 | 17 | 18 | 19 | 22 | 23 | 24 | 26 | 27 | 29 |
| 50 | 56 | 56.2 | 1.000 | 81 | 14 | 15 | 17 | 18 | 19 | 22 | 23 | 24 | 26 | 27 | 29 |
| 50 | 56 | 56.4 | 1.500 | 94 | 14 | 15 | 17 | 18 | 21 | 22 | 24 | 24 | 26 | 29 | 29 |
| 50 | 56 | 57.7 | 3.000 | 133 | 15 | 17 | 18 | 21 | 21 | 23 | 26 | 26 | 28 | 30 | 31 |
| 50 | 56 | 62.6 | 6.000 | 213 | 20 | 23 | 23 | 24 | 26 | 28 | 30 | 31 | 32 | 34 | 36 |
| 50 | 66 | 66.1 | 0.500 | 79 | 16 | 17 | 18 | 19 | 21 | 22 | 23 | 25 | 26 | 28 | 30 |
| 50 | 66 | 66.1 | 0.750 | 85 | 16 | 17 | 18 | 19 | 21 | 22 | 23 | 25 | 26 | 28 | 30 |
| 50 | 66 | 66.2 | 1.000 | 91 | 17 | 18 | 18 | 19 | 21 | 22 | 23 | 25 | 28 | 28 | 30 |
| 50 | 66 | 66.5 | 1.500 | 104 | 17 | 18 | 18 | 21 | 21 | 23 | 25 | 25 | 28 | 29 | 30 |
| 50 | 66 | 68.0 | 3.000 | 143 | 19 | 20 | 21 | 21 | 24 | 24 | 27 | 28 | 29 | 31 | 34 |
| 50 | 66 | 73.8 | 6.000 | 224 | 23 | 24 | 26 | 28 | 30 | 30 | 32 | 34 | 39 | 40 | 41 |
| 50 | 76 | 76.1 | 0.500 | 89 | 20 | 21 | 22 | 23 | 24 | 25 | 27 | 27 | 29 | 31 | 31 |
| 50 | 76 | 76.1 | 0.750 | 95 | 20 | 21 | 22 | 23 | 24 | 25 | 27 | 28 | 29 | 31 | 31 |
| 50 | 76 | 76.3 | 1.000 | 101 | 20 | 21 | 22 | 23 | 24 | 25 | 27 | 28 | 30 | 31 | 31 |
| 50 | 76 | 76.6 | 1.500 | 114 | 21 | 21 | 23 | 23 | 25 | 27 | 28 | 28 | 30 | 31 | 33 |
| 50 | 76 | 78.3 | 3.000 | 153 | 23 | 23 | 24 | 24 | 26 | 28 | 30 | 30 | 32 | 32 | 34 |
| 50 | 76 | 85.0 | 6.000 | 235 | 31 | 31 | 31 | 31 | 31 | 35 | 41 | 41 | 41 | 41 | 41 |
| 50 | 86 | 86.1 | 0.500 | 99 | 21 | 22 | 24 | 24 | 26 | 27 | 27 | 29 | 31 | 31 | 32 |
| 50 | 86 | 86.2 | 0.750 | 105 | 22 | 23 | 24 | 24 | 26 | 27 | 29 | 30 | 31 | 31 | 34 |
| 50 | 86 | 86.3 | 1.000 | 111 | 22 | 23 | 24 | 25 | 26 | 27 | 29 | 31 | 32 | 32 | 34 |
| 50 | 86 | 86.7 | 1.500 | 124 | 24 | 24 | 25 | 26 | 27 | 29 | 30 | 31 | 32 | 33 | 36 |
| 50 | 86 | 88.6 | 3.000 | 164 | 30 | 30 | 30 | 31 | 31 | 31 | 32 | 35 | 41 | 41 | 41 |
| 50 | 86 | 96.2 | 6.000 | 246 | 43 | 43 | 43 | 44 | 44 | 44 | 44 | 44 | 49 | 50 | 54 |
| 50 | 96 | 96.1 | 0.500 | 109 | 26 | 26 | 27 | 30 | 31 | 33 | 34 | 35 | 37 | 37 | 42 |
| 50 | 96 | 96.2 | 0.750 | 115 | 26 | 26 | 27 | 30 | 32 | 33 | 34 | 35 | 37 | 42 | 43 |
| 50 | 96 | 96.3 | 1.000 | 121 | 26 | 26 | 29 | 31 | 32 | 33 | 34 | 35 | 37 | 42 | 43 |
| 50 | 96 | 96.7 | 1.500 | 134 | 31 | 31 | 31 | 32 | 32 | 33 | 35 | 37 | 42 | 42 | 43 |
| 50 | 96 | 99.0 | 3.000 | 174 | 32 | 32 | 32 | 33 | 34 | 37 | 42 | 42 | 43 | 43 | 44 |
| 50 | 96 | 107.3 | 6.000 | 257 | 57 | 57 | 57 | 57 | 57 | 57 | 58 | 59 | 59 | 59 | 60 |
| 50 | 106 | 106.1 | 0.500 | 119 | 38 | 38 | 38 | 38 | 38 | 38 | 39 | 41 | 46 | 46 | 46 |
| 50 | 106 | 106.2 | 0.750 | 125 | 37 | 37 | 37 | 37 | 37 | 39 | 40 | 45 | 45 | 45 | 45 |
| 50 | 106 | 106.4 | 1.000 | 131 | 37 | 37 | 37 | 37 | 37 | 39 | 40 | 45 | 45 | 45 | 46 |
| 50 | 106 | 106.8 | 1.500 | 144 | 37 | 37 | 37 | 37 | 39 | 40 | 45 | 45 | 45 | 45 | 45 |
| 50 | 106 | 109.3 | 3.000 | 184 | 45 | 45 | 45 | 45 | 45 | 46 | 46 | 46 | 49 | 49 | 50 |
| 50 | 106 | 118.5 | 6.000 | 269 | 60 | 60 | 60 | 60 | 60 | 60 | 60 | 60 | 60 | 60 | 61 |
| 50 | 116 | 116.1 | 0.500 | 129 | 36 | 36 | 36 | 36 | 37 | 38 | 43 | 43 | 43 | 44 | 44 |
| 50 | 116 | 116.2 | 0.750 | 135 | 36 | 36 | 36 | 36 | 37 | 39 | 43 | 43 | 43 | 44 | 48 |
| 50 | 116 | 116.4 | 1.000 | 141 | 35 | 35 | 35 | 35 | 37 | 38 | 43 | 43 | 43 | 43 | 47 |
| 50 | 116 | 116.9 | 1.500 | 154 | 43 | 43 | 43 | 43 | 43 | 43 | 43 | 43 | 43 | 47 | 47 |
| 50 | 116 | 119.6 | 3.000 | 195 | 47 | 47 | 47 | 47 | 47 | 47 | 47 | 51 | 51 | 55 | 58 |
| 50 | 116 | 129.7 | 6.000 | 280 | 61 | 61 | 61 | 61 | 61 | 61 | 61 | 61 | 61 | 61 | 75 |

X - Bridging Requirements - Reference SP-Series Specification Section 904.5 BRIDGING on page 92

| | | | | | | | | | |
|-------|--------|--------|--------|--------|--------|--------|--------|--------|---------|
| 1 row | 2 rows | 3 rows | 4 rows | 5 rows | 6 rows | 7 rows | 8 rows | 9 rows | 10 rows |
|-------|--------|--------|--------|--------|--------|--------|--------|--------|---------|

Bearing Seat Depth - Profiles to the right of a colored line have a seat depth indicated in the chart below

| | | | |
|------------|-----|-----|--------------|
| Minimum 5" | 7½" | 10" | Maximum 12½" |
|------------|-----|-----|--------------|

Horizontal Deflection - Joist designs marked with the note 'δ_x>2' have a horizontal slip greater than 2". (Reference page 10)

SP-SERIES TABLES

www.newmill.com

SCISSOR JOIST (SPSC) TABLES

| Span ft | Chord Depth in | Ridge Depth in | Top Chord Pitch in/ft | Shape Depth in | Top Chord Uniform Load - Pounds per Linear Foot (plf) (ASD) | | | | | | | | | | |
|------------|----------------------|----------------------|--------------------------------|----------------------|---|-----------------------|-----------------------|-----------------------|-----------------------|-----------------------|-----------------------|-----------------------|-----------------------|-----------------------|-----------------------|
| | | | | | 300 | 350 | 400 | 450 | 500 | 550 | 600 | 650 | 700 | 750 | 800 |
| | | | | | Joist Self-Weight - Pounds per Linear Foot (plf) | | | | | | | | | | |
| 60 | 30 | 30.0 | 0.500 | 45 | 19 | 22 | 25 | 28 | 31 | 35 | 38 | 44 | 49 | 49 | 53 |
| 60 | 30 | 30.1 | 0.750 | 53 | 19 | 22 | 25 | 28 | 31 | 35 | 38 | 44 | 49 | 49 | 53 |
| 60 | 30 | 30.1 | 1.000 | 60 | 19 | 23 | 25 | 28 | 31 | 35 | 38 | 44 | 49 | 49 | 54 |
| 60 | 30 | 30.2 | 1.500 | 75 | 20 | 23 | 26 | 29 | 32 | 35 | 38 | 45 | 49 | 49 | 54 |
| 60 | 30 | 30.9 | 3.000 | 121 | 20 | 23 | 27 | 30 | 33 | 37 | 41 | 45 | 50 | 54 | 55 |
| 60 | 30 | 33.5 | 6.000 | 214 | 23 _{δx>2} | 27 _{δx>2} | 31 _{δx>2} | 35 _{δx>2} | 40 _{δx>2} | 44 _{δx>2} | 49 _{δx>2} | 54 _{δx>2} | 58 _{δx>2} | 62 _{δx>2} | 66 _{δx>2} |
| 60 | 40 | 40.0 | 0.500 | 55 | 16 | 18 | 20 | 22 | 24 | 27 | 29 | 32 | 32 | 35 | 38 |
| 60 | 40 | 40.1 | 0.750 | 63 | 16 | 18 | 20 | 22 | 25 | 27 | 29 | 32 | 32 | 35 | 38 |
| 60 | 40 | 40.1 | 1.000 | 70 | 16 | 18 | 20 | 22 | 25 | 27 | 29 | 32 | 34 | 35 | 38 |
| 60 | 40 | 40.3 | 1.500 | 85 | 16 | 18 | 21 | 22 | 25 | 27 | 29 | 32 | 34 | 37 | 38 |
| 60 | 40 | 41.2 | 3.000 | 131 | 18 | 19 | 23 | 25 | 27 | 30 | 31 | 34 | 36 | 38 | 44 |
| 60 | 40 | 44.7 | 6.000 | 225 | 19 _{δx>2} | 22 _{δx>2} | 24 _{δx>2} | 27 _{δx>2} | 30 _{δx>2} | 33 _{δx>2} | 34 _{δx>2} | 37 _{δx>2} | 39 _{δx>2} | 46 _{δx>2} | 47 _{δx>2} |
| 60 | 50 | 50.0 | 0.500 | 65 | 15 | 18 | 19 | 22 | 22 | 24 | 26 | 29 | 30 | 32 | 34 |
| 60 | 50 | 50.1 | 0.750 | 73 | 15 | 18 | 19 | 22 | 22 | 24 | 26 | 29 | 30 | 32 | 35 |
| 60 | 50 | 50.2 | 1.000 | 80 | 15 | 18 | 19 | 22 | 22 | 24 | 26 | 29 | 31 | 32 | 35 |
| 60 | 50 | 50.4 | 1.500 | 95 | 15 | 18 | 20 | 22 | 22 | 24 | 27 | 29 | 31 | 33 | 36 |
| 60 | 50 | 51.5 | 3.000 | 142 | 16 | 18 | 21 | 22 | 24 | 26 | 29 | 31 | 32 | 35 | 38 |
| 60 | 50 | 55.9 | 6.000 | 236 | 19 | 23 | 24 | 27 | 29 _{δx>2} | 32 _{δx>2} | 33 _{δx>2} | 36 _{δx>2} | 38 _{δx>2} | 45 _{δx>2} | 46 _{δx>2} |
| 60 | 60 | 60.1 | 0.500 | 75 | 17 | 18 | 20 | 22 | 23 | 24 | 27 | 29 | 31 | 32 | 34 |
| 60 | 60 | 60.1 | 0.750 | 83 | 17 | 18 | 20 | 22 | 23 | 26 | 27 | 29 | 30 | 32 | 34 |
| 60 | 60 | 60.2 | 1.000 | 90 | 17 | 19 | 20 | 22 | 24 | 26 | 27 | 29 | 31 | 32 | 34 |
| 60 | 60 | 60.5 | 1.500 | 105 | 18 | 19 | 21 | 22 | 24 | 26 | 29 | 30 | 31 | 32 | 34 |
| 60 | 60 | 61.8 | 3.000 | 152 | 18 | 20 | 21 | 23 | 26 | 28 | 30 | 31 | 32 | 34 | 35 |
| 60 | 60 | 67.1 | 6.000 | 247 | 22 | 23 | 26 | 28 | 30 | 31 | 33 | 36 | 42 | 42 | 43 |
| 60 | 70 | 70.1 | 0.500 | 85 | 19 | 20 | 23 | 23 | 25 | 28 | 29 | 31 | 32 | 32 | 34 |
| 60 | 70 | 70.1 | 0.750 | 93 | 20 | 20 | 23 | 23 | 25 | 27 | 29 | 31 | 31 | 32 | 34 |
| 60 | 70 | 70.2 | 1.000 | 100 | 20 | 20 | 23 | 23 | 25 | 28 | 29 | 32 | 32 | 32 | 34 |
| 60 | 70 | 70.5 | 1.500 | 116 | 20 | 21 | 23 | 23 | 26 | 28 | 29 | 32 | 32 | 34 | 36 |
| 60 | 70 | 72.2 | 3.000 | 162 | 24 | 24 | 25 | 27 | 29 | 30 | 32 | 34 | 36 | 41 | 41 |
| 60 | 70 | 78.3 | 6.000 | 258 | 26 | 32 | 32 | 32 | 33 | 34 | 37 | 43 | 44 | 44 | 45 |
| 60 | 80 | 80.1 | 0.500 | 95 | 22 | 24 | 24 | 26 | 27 | 29 | 30 | 32 | 34 | 36 | 36 |
| 60 | 80 | 80.2 | 0.750 | 103 | 22 | 24 | 24 | 26 | 27 | 29 | 30 | 32 | 34 | 36 | 40 |
| 60 | 80 | 80.3 | 1.000 | 110 | 23 | 24 | 24 | 27 | 29 | 30 | 31 | 32 | 34 | 36 | 40 |
| 60 | 80 | 80.6 | 1.500 | 126 | 24 | 24 | 25 | 27 | 29 | 30 | 31 | 34 | 36 | 40 | 41 |
| 60 | 80 | 82.5 | 3.000 | 172 | 24 | 26 | 27 | 29 | 30 | 30 | 32 | 36 | 41 | 41 | 41 |
| 60 | 80 | 89.4 | 6.000 | 269 | 42 | 42 | 42 | 42 | 43 | 43 | 43 | 44 | 48 | 49 | 53 |
| 60 | 90 | 90.1 | 0.500 | 105 | 28 | 29 | 30 | 31 | 33 | 34 | 34 | 36 | 38 | 43 | 43 |
| 60 | 90 | 90.2 | 0.750 | 113 | 28 | 29 | 30 | 31 | 33 | 34 | 34 | 36 | 38 | 42 | 43 |
| 60 | 90 | 90.3 | 1.000 | 120 | 28 | 29 | 30 | 33 | 34 | 34 | 36 | 38 | 38 | 42 | 43 |
| 60 | 90 | 90.7 | 1.500 | 136 | 28 | 30 | 31 | 33 | 34 | 34 | 36 | 38 | 42 | 43 | 43 |
| 60 | 90 | 92.8 | 3.000 | 183 | 33 | 34 | 34 | 34 | 36 | 37 | 42 | 43 | 43 | 43 | 43 |
| 60 | 90 | 100.6 | 6.000 | 281 | 48 | 48 | 48 | 48 | 48 | 49 | 53 | 53 | 57 | 57 | 61 |
| 60 | 100 | 100.1 | 0.500 | 115 | 30 | 30 | 33 | 34 | 35 | 35 | 37 | 39 | 43 | 43 | 43 |
| 60 | 100 | 100.2 | 0.750 | 123 | 30 | 31 | 32 | 34 | 35 | 35 | 37 | 39 | 43 | 43 | 43 |
| 60 | 100 | 100.3 | 1.000 | 130 | 30 | 31 | 33 | 34 | 35 | 35 | 37 | 39 | 43 | 43 | 43 |
| 60 | 100 | 100.8 | 1.500 | 146 | 35 | 35 | 35 | 35 | 36 | 37 | 39 | 43 | 44 | 44 | 44 |
| 60 | 100 | 103.1 | 3.000 | 193 | 37 | 37 | 37 | 37 | 40 | 45 | 45 | 46 | 46 | 49 | 50 |
| 60 | 100 | 111.8 | 6.000 | 292 | 60 | 60 | 60 | 60 | 60 | 60 | 60 | 60 | 61 | 61 | 62 |
| 60 | 110 | 110.1 | 0.500 | 125 | 35 | 35 | 35 | 35 | 35 | 37 | 39 | 44 | 44 | 45 | 45 |
| 60 | 110 | 110.2 | 0.750 | 133 | 35 | 36 | 36 | 36 | 36 | 38 | 39 | 44 | 45 | 45 | 45 |
| 60 | 110 | 110.4 | 1.000 | 140 | 36 | 36 | 36 | 36 | 38 | 40 | 45 | 45 | 46 | 46 | 46 |
| 60 | 110 | 110.9 | 1.500 | 156 | 37 | 37 | 37 | 37 | 39 | 41 | 45 | 46 | 46 | 46 | 50 |
| 60 | 110 | 113.4 | 3.000 | 203 | 44 | 44 | 44 | 45 | 45 | 45 | 46 | 50 | 54 | 54 | 58 |
| 60 | 110 | 123.0 | 6.000 | 303 | 63 | 63 | 63 | 63 | 63 | 64 | 64 | 64 | 66 | 66 | 71 |
| 60 | 120 | 120.1 | 0.500 | 135 | 54 | 54 | 54 | 54 | 54 | 54 | 54 | 54 | 58 | 58 | 58 |
| 60 | 120 | 120.2 | 0.750 | 143 | 54 | 54 | 54 | 54 | 54 | 54 | 54 | 54 | 58 | 58 | 61 |
| 60 | 120 | 120.4 | 1.000 | 150 | 54 | 54 | 54 | 54 | 54 | 54 | 54 | 54 | 58 | 58 | 61 |
| 60 | 120 | 120.9 | 1.500 | 166 | 54 | 54 | 54 | 54 | 54 | 54 | 54 | 57 | 57 | 61 | 61 |
| 60 | 120 | 123.7 | 3.000 | 214 | 61 | 61 | 61 | 61 | 62 | 62 | 63 | 64 | 64 | 64 | 64 |
| 60 | 120 | 134.2 | 6.000 | 314 | 80 | 80 | 80 | 80 | 80 | 80 | 80 | 80 | 81 | 81 | 81 |

X - Bridging Requirements - Reference SP-Series Specification Section 904.5 BRIDGING on page 92

| | | | | | | | | | |
|-------|--------|--------|--------|--------|--------|--------|--------|--------|---------|
| 1 row | 2 rows | 3 rows | 4 rows | 5 rows | 6 rows | 7 rows | 8 rows | 9 rows | 10 rows |
|-------|--------|--------|--------|--------|--------|--------|--------|--------|---------|

Bearing Seat Depth - Profiles to the right of a colored line have a seat depth indicated in the chart below

| | | | |
|------------|-----|-----|--------------|
| Minimum 5" | 7½" | 10" | Maximum 12½" |
|------------|-----|-----|--------------|

Horizontal Deflection - Joist designs marked with the note 'δ_x>2' have a horizontal slip greater than 2". (Reference page 10)

SCISSOR JOIST (SPSC) TABLES

| Span ft | Chord Depth in | Ridge Depth in | Top Chord Pitch in/ft | Shape Depth in | Top Chord Uniform Load - Pounds per Linear Foot (plf) (ASD) | | | | | | | | | | |
|------------|----------------------|----------------------|--------------------------------|----------------------|---|-----------------------|-----------------------|-----------------------|-----------------------|-----------------------|-----------------------|-----------------------|-----------------------|-----------------------|-----|
| | | | | | 300 | 350 | 400 | 450 | 500 | 550 | 600 | 650 | 700 | 750 | 800 |
| | | | | | Joist Self-Weight - Pounds per Linear Foot (plf) | | | | | | | | | | |
| 70 | 36 | 36.0 | 0.500 | 54 | 21 | 25 | 27 | 32 | 35 | 39 | 45 | 50 | 54 | 57 | |
| 70 | 36 | 36.1 | 0.750 | 62 | 21 | 25 | 29 | 32 | 35 | 39 | 45 | 50 | 54 | 58 | |
| 70 | 36 | 36.1 | 1.000 | 71 | 22 | 25 | 29 | 32 | 36 | 39 | 45 | 49 | 50 | 54 | |
| 70 | 36 | 36.3 | 1.500 | 89 | 22 | 25 | 29 | 32 | 36 | 39 | 45 | 50 | 50 | 54 | |
| 70 | 36 | 37.1 | 3.000 | 142 | 23 | 26 | 31 | 34 | 37 | 41 | 47 | 51 | 55 | 59 | |
| 70 | 36 | 40.2 | 6.000 | 250 | 26 _{δx>2} | 30 _{δx>2} | 35 _{δx>2} | 39 _{δx>2} | 44 _{δx>2} | 50 _{δx>2} | 55 _{δx>2} | 59 _{δx>2} | 63 _{δx>2} | 67 _{δx>2} | |
| 70 | 46 | 46.0 | 0.500 | 64 | 18 | 22 | 24 | 27 | 30 | 32 | 34 | 36 | 39 | 45 | |
| 70 | 46 | 46.1 | 0.750 | 72 | 19 | 22 | 24 | 27 | 30 | 32 | 35 | 37 | 39 | 45 | |
| 70 | 46 | 46.2 | 1.000 | 81 | 19 | 22 | 24 | 27 | 30 | 33 | 35 | 37 | 39 | 45 | |
| 70 | 46 | 46.4 | 1.500 | 99 | 19 | 23 | 24 | 28 | 30 | 33 | 36 | 38 | 44 | 45 | |
| 70 | 46 | 47.4 | 3.000 | 152 | 20 | 23 | 25 | 28 | 31 | 34 | 36 | 39 | 45 | 46 | |
| 70 | 46 | 51.4 | 6.000 | 261 | 23 _{δx>2} | 26 _{δx>2} | 29 _{δx>2} | 32 _{δx>2} | 35 _{δx>2} | 38 _{δx>2} | 42 _{δx>2} | 47 _{δx>2} | 49 _{δx>2} | 50 _{δx>2} | |
| 70 | 56 | 56.0 | 0.500 | 74 | 18 | 20 | 22 | 24 | 27 | 30 | 32 | 35 | 37 | 39 | |
| 70 | 56 | 56.1 | 0.750 | 82 | 18 | 20 | 22 | 24 | 27 | 30 | 32 | 35 | 37 | 39 | |
| 70 | 56 | 56.2 | 1.000 | 91 | 18 | 21 | 22 | 26 | 27 | 30 | 32 | 36 | 37 | 43 | |
| 70 | 56 | 56.4 | 1.500 | 109 | 18 | 21 | 23 | 26 | 29 | 31 | 32 | 36 | 38 | 44 | |
| 70 | 56 | 57.7 | 3.000 | 163 | 20 | 22 | 24 | 27 | 30 | 33 | 35 | 38 | 43 | 45 | |
| 70 | 56 | 62.6 | 6.000 | 273 | 23 _{δx>2} | 26 _{δx>2} | 30 _{δx>2} | 32 _{δx>2} | 34 _{δx>2} | 39 _{δx>2} | 45 _{δx>2} | 47 _{δx>2} | 47 _{δx>2} | 49 _{δx>2} | |
| 70 | 66 | 66.1 | 0.500 | 84 | 18 | 21 | 22 | 24 | 27 | 29 | 30 | 32 | 34 | 37 | |
| 70 | 66 | 66.1 | 0.750 | 92 | 18 | 21 | 22 | 24 | 27 | 29 | 30 | 33 | 35 | 37 | |
| 70 | 66 | 66.2 | 1.000 | 101 | 19 | 21 | 22 | 26 | 28 | 30 | 30 | 33 | 35 | 42 | |
| 70 | 66 | 66.5 | 1.500 | 119 | 19 | 21 | 23 | 26 | 28 | 30 | 30 | 33 | 35 | 42 | |
| 70 | 66 | 68.0 | 3.000 | 173 | 22 | 23 | 25 | 28 | 30 | 32 | 34 | 40 | 41 | 42 | |
| 70 | 66 | 73.8 | 6.000 | 284 | 26 | 29 | 31 | 31 | 35 | 41 | 42 | 43 | 44 _{δx>2} | 51 _{δx>2} | |
| 70 | 76 | 76.1 | 0.500 | 94 | 21 | 24 | 24 | 26 | 28 | 31 | 32 | 32 | 35 | 37 | |
| 70 | 76 | 76.1 | 0.750 | 102 | 22 | 24 | 24 | 27 | 30 | 32 | 32 | 34 | 36 | 37 | |
| 70 | 76 | 76.3 | 1.000 | 111 | 23 | 24 | 25 | 27 | 30 | 32 | 32 | 34 | 37 | 42 | |
| 70 | 76 | 76.6 | 1.500 | 129 | 23 | 24 | 25 | 27 | 30 | 32 | 32 | 34 | 37 | 42 | |
| 70 | 76 | 78.3 | 3.000 | 183 | 25 | 26 | 28 | 29 | 32 | 33 | 36 | 36 | 42 | 43 | |
| 70 | 76 | 85.0 | 6.000 | 295 | 33 | 34 | 34 | 36 | 38 | 44 | 46 | 47 | 51 | 51 | |
| 70 | 86 | 86.1 | 0.500 | 104 | 25 | 26 | 27 | 29 | 31 | 34 | 35 | 36 | 38 | 43 | |
| 70 | 86 | 86.2 | 0.750 | 112 | 25 | 27 | 28 | 29 | 31 | 35 | 35 | 36 | 38 | 43 | |
| 70 | 86 | 86.3 | 1.000 | 121 | 26 | 27 | 28 | 30 | 31 | 35 | 36 | 38 | 38 | 43 | |
| 70 | 86 | 86.7 | 1.500 | 139 | 27 | 27 | 29 | 31 | 32 | 35 | 36 | 38 | 43 | 44 | |
| 70 | 86 | 88.6 | 3.000 | 194 | 33 | 33 | 33 | 33 | 37 | 41 | 42 | 42 | 42 | 47 | |
| 70 | 86 | 96.2 | 6.000 | 306 | 47 | 47 | 48 | 48 | 48 | 49 | 53 | 57 | 58 | 62 | |
| 70 | 96 | 96.1 | 0.500 | 114 | 33 | 35 | 37 | 38 | 38 | 40 | 42 | 46 | 47 | 47 | |
| 70 | 96 | 96.2 | 0.750 | 122 | 33 | 36 | 37 | 38 | 38 | 42 | 46 | 46 | 47 | 47 | |
| 70 | 96 | 96.3 | 1.000 | 131 | 33 | 36 | 37 | 38 | 40 | 42 | 46 | 46 | 47 | 51 | |
| 70 | 96 | 96.7 | 1.500 | 149 | 38 | 38 | 38 | 38 | 40 | 42 | 46 | 47 | 47 | 51 | |
| 70 | 96 | 99.0 | 3.000 | 204 | 38 | 38 | 39 | 41 | 46 | 47 | 47 | 47 | 51 | 55 | |
| 70 | 96 | 107.3 | 6.000 | 317 | 61 | 61 | 61 | 61 | 61 | 61 | 62 | 62 | 62 | 63 | |
| 70 | 106 | 106.1 | 0.500 | 124 | 40 | 40 | 40 | 41 | 42 | 44 | 49 | 49 | 49 | 53 | |
| 70 | 106 | 106.2 | 0.750 | 132 | 40 | 40 | 40 | 41 | 42 | 44 | 49 | 49 | 49 | 53 | |
| 70 | 106 | 106.4 | 1.000 | 141 | 40 | 40 | 40 | 40 | 44 | 48 | 49 | 49 | 49 | 53 | |
| 70 | 106 | 106.8 | 1.500 | 159 | 41 | 41 | 41 | 43 | 45 | 49 | 50 | 50 | 50 | 54 | |
| 70 | 106 | 109.3 | 3.000 | 214 | 49 | 49 | 49 | 49 | 49 | 49 | 49 | 53 | 53 | 57 | |
| 70 | 106 | 118.5 | 6.000 | 329 | 69 | 69 | 69 | 69 | 69 | 69 | 70 | 70 | 71 | 76 | |
| 70 | 116 | 116.1 | 0.500 | 134 | 42 | 42 | 43 | 44 | 46 | 50 | 51 | 51 | 51 | 55 | |
| 70 | 116 | 116.2 | 0.750 | 142 | 43 | 43 | 43 | 44 | 46 | 50 | 51 | 51 | 51 | 55 | |
| 70 | 116 | 116.4 | 1.000 | 151 | 42 | 42 | 43 | 44 | 50 | 50 | 50 | 51 | 55 | 58 | |
| 70 | 116 | 116.9 | 1.500 | 169 | 50 | 50 | 50 | 50 | 50 | 50 | 51 | 51 | 55 | 59 | |
| 70 | 116 | 119.6 | 3.000 | 225 | 51 | 51 | 51 | 51 | 51 | 52 | 56 | 59 | 59 | 63 | |
| 70 | 116 | 129.7 | 6.000 | 340 | 74 | 74 | 74 | 74 | 75 | 75 | 75 | 75 | 75 | 89 | |
| 70 | 126 | 126.1 | 0.500 | 144 | 49 | 49 | 49 | 49 | 49 | 49 | 49 | 49 | 53 | 54 | |
| 70 | 126 | 126.2 | 0.750 | 152 | 49 | 49 | 49 | 49 | 49 | 49 | 49 | 49 | 53 | 54 | |
| 70 | 126 | 126.4 | 1.000 | 161 | 49 | 49 | 49 | 49 | 49 | 49 | 49 | 53 | 53 | 57 | |
| 70 | 126 | 127.0 | 1.500 | 179 | 49 | 49 | 49 | 49 | 49 | 49 | 53 | 54 | 57 | 61 | |
| 70 | 126 | 129.9 | 3.000 | 235 | 63 | 63 | 63 | 63 | 63 | 63 | 63 | 64 | 64 | 64 | |
| 70 | 126 | 140.9 | 6.000 | 351 | 88 | 88 | 88 | 89 | 89 | 89 | 89 | 89 | 89 | 89 | |

X - Bridging Requirements - Reference SP-Series Specification Section 904.5 BRIDGING on page 92

| | | | | | | | | | |
|-------|--------|--------|--------|--------|--------|--------|--------|--------|---------|
| 1 row | 2 rows | 3 rows | 4 rows | 5 rows | 6 rows | 7 rows | 8 rows | 9 rows | 10 rows |
|-------|--------|--------|--------|--------|--------|--------|--------|--------|---------|

Bearing Seat Depth - Profiles to the right of a colored line have a seat depth indicated in the chart below

| | | | |
|------------|-----|-----|--------------|
| Minimum 5" | 7½" | 10" | Maximum 12½" |
|------------|-----|-----|--------------|

Horizontal Deflection - Joist designs marked with the note 'δ_x>2' have a horizontal slip greater than 2". (Reference page 10)

SCISSOR JOIST (SPSC) TABLES

| Span ft | Chord Depth in | Ridge Depth in | Top Chord Pitch in/ft | Shape Depth in | Top Chord Uniform Load - Pounds per Linear Foot (plf) (ASD) | | | | | | | | | | |
|------------|----------------------|----------------------|--------------------------------|----------------------|---|-----------------------|-----------------------|-----------------------|-----------------------|-----------------------|-----------------------|-----------------------|-----------------------|-----------------------|-----------------------|
| | | | | | 300 | 350 | 400 | 450 | 500 | 550 | 600 | 650 | 700 | 750 | 800 |
| | | | | | Joist Self-Weight - Pounds per Linear Foot (plf) | | | | | | | | | | |
| 80 | 40 | 40.0 | 0.500 | 60 | 25 | 29 | 33 | 37 | 45 | 49 | 50 | 54 | 61 | 65 | 69 |
| 80 | 40 | 40.1 | 0.750 | 70 | 25 | 29 | 33 | 37 | 45 | 49 | 50 | 57 | 61 | 65 | 69 |
| 80 | 40 | 40.1 | 1.000 | 80 | 25 | 30 | 33 | 37 | 45 | 50 | 50 | 57 | 61 | 65 | 69 |
| 80 | 40 | 40.3 | 1.500 | 100 | 26 | 30 | 35 | 39 | 45 | 50 | 54 | 58 | 62 | 65 | 69 |
| 80 | 40 | 41.2 | 3.000 | 161 | 27 _{8x>2} | 31 _{8x>2} | 36 _{8x>2} | 40 _{8x>2} | 45 _{8x>2} | 51 | 55 _{8x>2} | 59 | 63 _{8x>2} | 67 _{8x>2} | 74 _{8x>2} |
| 80 | 40 | 44.7 | 6.000 | 285 | 30 _{8x>2} | 36 _{8x>2} | 41 _{8x>2} | 49 _{8x>2} | 54 _{8x>2} | 59 _{8x>2} | 63 _{8x>2} | 67 _{8x>2} | 75 _{8x>2} | 78 _{8x>2} | 84 _{8x>2} |
| 80 | 50 | 50.0 | 0.500 | 70 | 22 | 25 | 28 | 31 | 34 | 38 | 45 | 47 | 51 | 52 | 56 |
| 80 | 50 | 50.1 | 0.750 | 80 | 22 | 25 | 28 | 33 | 35 | 39 | 45 | 47 | 51 | 55 | 56 |
| 80 | 50 | 50.2 | 1.000 | 90 | 22 | 25 | 28 | 33 | 35 | 39 | 45 | 47 | 51 | 55 | 56 |
| 80 | 50 | 50.4 | 1.500 | 110 | 23 | 25 | 29 | 33 | 36 | 39 | 45 | 47 | 52 | 56 | 56 |
| 80 | 50 | 51.5 | 3.000 | 172 | 24 | 27 | 30 | 33 | 35 | 38 | 46 | 48 | 48 | 57 | 57 |
| 80 | 50 | 55.9 | 6.000 | 296 | 28 _{8x>2} | 31 _{8x>2} | 33 _{8x>2} | 37 _{8x>2} | 40 _{8x>2} | 47 _{8x>2} | 49 _{8x>2} | 50 _{8x>2} | 56 _{8x>2} | 61 _{8x>2} | 65 _{8x>2} |
| 80 | 60 | 60.1 | 0.500 | 80 | 22 | 24 | 27 | 30 | 32 | 36 | 39 | 44 | 45 | 46 | 48 |
| 80 | 60 | 60.1 | 0.750 | 90 | 22 | 24 | 27 | 30 | 32 | 36 | 39 | 44 | 45 | 47 | 48 |
| 80 | 60 | 60.2 | 1.000 | 100 | 22 | 24 | 27 | 30 | 33 | 36 | 39 | 44 | 45 | 47 | 48 |
| 80 | 60 | 60.5 | 1.500 | 120 | 22 | 25 | 27 | 30 | 33 | 36 | 39 | 44 | 45 | 47 | 52 |
| 80 | 60 | 61.8 | 3.000 | 182 | 22 | 27 | 29 | 31 | 35 | 38 | 43 | 45 | 46 | 51 | 53 |
| 80 | 60 | 67.1 | 6.000 | 307 | 27 _{8x>2} | 29 _{8x>2} | 32 _{8x>2} | 35 _{8x>2} | 43 _{8x>2} | 46 _{8x>2} | 46 _{8x>2} | 48 _{8x>2} | 54 _{8x>2} | 55 _{8x>2} | 61 _{8x>2} |
| 80 | 70 | 70.1 | 0.500 | 90 | 22 | 23 | 26 | 29 | 31 | 34 | 37 | 43 | 43 | 45 | 46 |
| 80 | 70 | 70.1 | 0.750 | 100 | 23 | 24 | 26 | 29 | 31 | 34 | 37 | 43 | 43 | 45 | 46 |
| 80 | 70 | 70.2 | 1.000 | 110 | 23 | 24 | 26 | 29 | 31 | 34 | 37 | 43 | 43 | 45 | 46 |
| 80 | 70 | 70.5 | 1.500 | 131 | 23 | 24 | 27 | 30 | 31 | 34 | 37 | 43 | 43 | 45 | 46 |
| 80 | 70 | 72.2 | 3.000 | 192 | 25 | 26 | 29 | 31 | 35 | 41 | 42 | 44 | 44 | 50 | 51 |
| 80 | 70 | 78.3 | 6.000 | 318 | 32 | 32 _{8x>2} | 34 _{8x>2} | 38 _{8x>2} | 45 _{8x>2} | 46 _{8x>2} | 47 _{8x>2} | 53 _{8x>2} | 55 _{8x>2} | 59 _{8x>2} | 61 _{8x>2} |
| 80 | 80 | 80.1 | 0.500 | 100 | 25 | 27 | 28 | 30 | 33 | 35 | 37 | 42 | 44 | 45 | 46 |
| 80 | 80 | 80.2 | 0.750 | 110 | 25 | 27 | 28 | 31 | 34 | 35 | 37 | 42 | 44 | 45 | 46 |
| 80 | 80 | 80.3 | 1.000 | 120 | 26 | 27 | 30 | 32 | 34 | 35 | 37 | 42 | 44 | 45 | 47 |
| 80 | 80 | 80.6 | 1.500 | 141 | 26 | 28 | 30 | 32 | 35 | 37 | 42 | 43 | 44 | 45 | 50 |
| 80 | 80 | 82.5 | 3.000 | 202 | 26 | 29 | 31 | 33 | 37 | 42 | 42 | 42 | 44 | 49 | 50 |
| 80 | 80 | 89.4 | 6.000 | 329 | 43 | 44 | 44 | 45 | 45 | 45 | 50 | 55 _{8x>2} | 56 _{8x>2} | 60 _{8x>2} | 62 _{8x>2} |
| 80 | 90 | 90.1 | 0.500 | 110 | 29 | 31 | 33 | 34 | 35 | 36 | 38 | 43 | 43 | 45 | 47 |
| 80 | 90 | 90.2 | 0.750 | 120 | 29 | 32 | 33 | 34 | 36 | 38 | 43 | 43 | 43 | 45 | 50 |
| 80 | 90 | 90.3 | 1.000 | 130 | 29 | 32 | 33 | 35 | 36 | 38 | 43 | 43 | 44 | 45 | 51 |
| 80 | 90 | 90.7 | 1.500 | 151 | 30 | 32 | 35 | 35 | 36 | 38 | 43 | 43 | 44 | 45 | 51 |
| 80 | 90 | 92.8 | 3.000 | 213 | 34 | 35 | 35 | 37 | 43 | 44 | 44 | 44 | 48 | 50 | 54 |
| 80 | 90 | 100.6 | 6.000 | 341 | 50 | 51 | 51 | 52 | 52 | 56 | 57 | 61 | 65 | 66 | 66 |
| 80 | 100 | 100.1 | 0.500 | 120 | 34 | 36 | 38 | 39 | 41 | 42 | 47 | 47 | 47 | 48 | 52 |
| 80 | 100 | 100.2 | 0.750 | 130 | 34 | 36 | 38 | 39 | 41 | 47 | 47 | 47 | 47 | 51 | 52 |
| 80 | 100 | 100.3 | 1.000 | 140 | 34 | 37 | 38 | 39 | 42 | 47 | 47 | 47 | 48 | 51 | 52 |
| 80 | 100 | 100.8 | 1.500 | 161 | 38 | 38 | 38 | 40 | 42 | 47 | 47 | 47 | 51 | 51 | 52 |
| 80 | 100 | 103.1 | 3.000 | 223 | 42 | 42 | 44 | 46 | 51 | 51 | 51 | 56 | 56 | 60 | 60 |
| 80 | 100 | 111.8 | 6.000 | 352 | 65 | 65 | 66 | 66 | 66 | 67 | 67 | 67 | 68 | 68 | 68 |
| 80 | 110 | 110.1 | 0.500 | 130 | 40 | 41 | 41 | 42 | 44 | 48 | 48 | 49 | 49 | 53 | 53 |
| 80 | 110 | 110.2 | 0.750 | 140 | 40 | 41 | 41 | 42 | 44 | 48 | 48 | 49 | 53 | 53 | 53 |
| 80 | 110 | 110.4 | 1.000 | 150 | 40 | 41 | 41 | 42 | 48 | 48 | 48 | 49 | 53 | 53 | 57 |
| 80 | 110 | 110.9 | 1.500 | 171 | 40 | 41 | 41 | 44 | 48 | 48 | 48 | 52 | 53 | 56 | 57 |
| 80 | 110 | 113.4 | 3.000 | 233 | 55 | 55 | 55 | 55 | 56 | 59 | 59 | 63 | 67 | 67 | 67 |
| 80 | 110 | 123.0 | 6.000 | 363 | 70 | 71 | 71 | 71 | 71 | 71 | 71 | 71 | 76 | 77 | 86 |
| 80 | 120 | 120.1 | 0.500 | 140 | 57 | 57 | 57 | 57 | 57 | 57 | 58 | 62 | 62 | 66 | 66 |
| 80 | 120 | 120.2 | 0.750 | 150 | 57 | 57 | 57 | 57 | 57 | 57 | 58 | 62 | 66 | 66 | 70 |
| 80 | 120 | 120.4 | 1.000 | 160 | 57 | 57 | 57 | 57 | 57 | 57 | 61 | 62 | 66 | 66 | 70 |
| 80 | 120 | 120.9 | 1.500 | 181 | 57 | 57 | 57 | 57 | 57 | 57 | 61 | 65 | 66 | 70 | 70 |
| 80 | 120 | 123.7 | 3.000 | 244 | 69 | 69 | 69 | 69 | 70 | 70 | 70 | 70 | 70 | 70 | 70 |
| 80 | 120 | 134.2 | 6.000 | 374 | 86 | 86 | 86 | 86 | 86 | 86 | 87 | 87 | 87 | 87 | 87 |
| 80 | 130 | 130.1 | 0.375 | 145 | 51 | 51 | 52 | 58 | 58 | 58 | 59 | 63 | 63 | 67 | 68 |
| 80 | 130 | 130.2 | 0.625 | 155 | 58 | 58 | 58 | 58 | 58 | 58 | 58 | 62 | 62 | 67 | 67 |
| 80 | 130 | 130.3 | 0.875 | 165 | 58 | 58 | 58 | 58 | 58 | 58 | 58 | 63 | 66 | 67 | 71 |
| 80 | 130 | 130.7 | 1.250 | 181 | 58 | 58 | 58 | 58 | 58 | 58 | 62 | 63 | 67 | 67 | 71 |
| 80 | 130 | 131.8 | 2.000 | 212 | 60 | 60 | 60 | 60 | 60 | 72 | 72 | 72 | 73 | 73 | 73 |
| 80 | 130 | 137.0 | 4.000 | 297 | 71 | 72 | 72 | 72 | 72 | 72 | 72 | 72 | 72 | 72 | 77 |

X - Bridging Requirements - Reference SP-Series Specification Section 904.5 BRIDGING on page 92

| | | | | | | | | | |
|-------|--------|--------|--------|--------|--------|--------|--------|--------|---------|
| 1 row | 2 rows | 3 rows | 4 rows | 5 rows | 6 rows | 7 rows | 8 rows | 9 rows | 10 rows |
|-------|--------|--------|--------|--------|--------|--------|--------|--------|---------|

Bearing Seat Depth - Profiles to the right of a colored line have a seat depth indicated in the chart below

| | | | |
|------------|-----|-----|--------------|
| Minimum 5" | 7½" | 10" | Maximum 12½" |
|------------|-----|-----|--------------|

Horizontal Deflection - Joist designs marked with the note 'δ_{x>2}' have a horizontal slip greater than 2". (Reference page 10)

SCISSOR JOIST (SPSC) TABLES

| Span ft | Chord Depth in | Ridge Depth in | Top Chord Pitch in/ft | Shape Depth in | Top Chord Uniform Load - Pounds per Linear Foot (plf) (ASD) | | | | | | | | | | |
|------------|----------------------|----------------------|--------------------------------|----------------------|---|-----------------------|-----------------------|-----------------------|-----------------------|-----------------------|-----------------------|-----------------------|-----------------------|-----------------------|-----------------------|
| | | | | | 300 | 350 | 400 | 450 | 500 | 550 | 600 | 650 | 700 | 750 | 800 |
| | | | | | Joist Self-Weight - Pounds per Linear Foot (plf) | | | | | | | | | | |
| 90 | 46 | 46.0 | 0.500 | 69 | 28 | 32 | 36 | 41 | 46 | 50 | 54 | 58 | 62 | 69 | 73 |
| 90 | 46 | 46.1 | 0.750 | 80 | 28 | 32 | 36 | 41 | 46 | 50 | 54 | 58 | 65 | 69 | 73 |
| 90 | 46 | 46.2 | 1.000 | 91 | 28 | 32 | 36 | 41 | 46 | 51 | 55 | 59 | 66 | 69 | 73 |
| 90 | 46 | 46.4 | 1.500 | 114 | 28 | 32 | 36 | 45 | 46 | 51 | 55 | 59 | 66 | 70 | 74 |
| 90 | 46 | 47.4 | 3.000 | 182 | 30 _{δx>2} | 33 _{δx>2} | 39 _{δx>2} | 45 _{δx>2} | 51 _{δx>2} | 51 _{δx>2} | 59 _{δx>2} | 63 _{δx>2} | 67 _{δx>2} | 71 _{δx>2} | 79 _{δx>2} |
| 90 | 46 | 51.4 | 6.000 | 321 | 34 _{δx>2} | 38 _{δx>2} | 45 _{δx>2} | 50 _{δx>2} | 55 _{δx>2} | 63 _{δx>2} | 67 _{δx>2} | 71 _{δx>2} | 79 _{δx>2} | 84 _{δx>2} | 89 _{δx>2} |
| 90 | 56 | 56.0 | 0.500 | 79 | 24 | 29 | 33 | 36 | 39 | 45 | 47 | 52 | 56 | 56 | 63 |
| 90 | 56 | 56.1 | 0.750 | 90 | 24 | 29 | 33 | 36 | 39 | 45 | 47 | 56 | 56 | 60 | 63 |
| 90 | 56 | 56.2 | 1.000 | 101 | 25 | 29 | 33 | 36 | 39 | 46 | 48 | 56 | 56 | 60 | 64 |
| 90 | 56 | 56.4 | 1.500 | 124 | 26 | 30 | 33 | 36 | 44 | 46 | 48 | 56 | 56 | 60 | 64 |
| 90 | 56 | 57.7 | 3.000 | 193 | 27 | 30 | 34 | 39 | 45 | 47 | 49 | 57 | 58 | 62 | 66 |
| 90 | 56 | 62.6 | 6.000 | 333 | 33 _{δx>2} | 34 _{δx>2} | 40 _{δx>2} | 48 _{δx>2} | 49 _{δx>2} | 51 _{δx>2} | 57 _{δx>2} | 66 _{δx>2} | 66 _{δx>2} | 71 _{δx>2} | 75 _{δx>2} |
| 90 | 66 | 66.1 | 0.500 | 89 | 25 | 27 | 30 | 33 | 38 | 43 | 45 | 47 | 49 | 56 | 57 |
| 90 | 66 | 66.1 | 0.750 | 100 | 25 | 27 | 30 | 33 | 38 | 44 | 45 | 47 | 52 | 57 | 57 |
| 90 | 66 | 66.2 | 1.000 | 111 | 25 | 27 | 32 | 33 | 38 | 44 | 45 | 47 | 52 | 57 | 60 |
| 90 | 66 | 66.5 | 1.500 | 134 | 24 | 27 | 32 | 34 | 38 | 44 | 45 | 47 | 53 | 57 | 61 |
| 90 | 66 | 68.0 | 3.000 | 203 | 26 | 29 | 32 | 37 | 43 | 45 | 46 | 52 | 54 | 58 | 62 |
| 90 | 66 | 73.8 | 6.000 | 344 | 31 _{δx>2} | 35 _{δx>2} | 38 _{δx>2} | 45 _{δx>2} | 47 _{δx>2} | 49 _{δx>2} | 54 _{δx>2} | 60 _{δx>2} | 62 _{δx>2} | 67 _{δx>2} | 71 _{δx>2} |
| 90 | 76 | 76.1 | 0.500 | 99 | 24 | 28 | 30 | 33 | 36 | 39 | 46 | 46 | 47 | 53 | 54 |
| 90 | 76 | 76.1 | 0.750 | 110 | 24 | 28 | 30 | 33 | 36 | 39 | 46 | 46 | 47 | 53 | 54 |
| 90 | 76 | 76.3 | 1.000 | 121 | 24 | 28 | 30 | 34 | 36 | 39 | 46 | 46 | 47 | 53 | 54 |
| 90 | 76 | 76.6 | 1.500 | 144 | 26 | 28 | 32 | 34 | 38 | 44 | 46 | 46 | 48 | 53 | 55 |
| 90 | 76 | 78.3 | 3.000 | 213 | 28 | 30 | 32 | 36 | 43 | 45 | 47 | 47 | 52 | 54 | 60 |
| 90 | 76 | 85.0 | 6.000 | 355 | 34 _{δx>2} | 36 _{δx>2} | 40 _{δx>2} | 46 _{δx>2} | 47 _{δx>2} | 54 _{δx>2} | 55 _{δx>2} | 59 _{δx>2} | 61 _{δx>2} | 66 _{δx>2} | 69 _{δx>2} |
| 90 | 86 | 86.1 | 0.500 | 109 | 26 | 28 | 30 | 34 | 35 | 37 | 43 | 44 | 46 | 51 | 52 |
| 90 | 86 | 86.2 | 0.750 | 120 | 27 | 28 | 31 | 34 | 35 | 37 | 43 | 44 | 46 | 50 | 52 |
| 90 | 86 | 86.3 | 1.000 | 131 | 27 | 28 | 31 | 34 | 37 | 42 | 43 | 44 | 46 | 50 | 52 |
| 90 | 86 | 86.7 | 1.500 | 154 | 27 | 30 | 31 | 35 | 37 | 42 | 43 | 45 | 50 | 51 | 52 |
| 90 | 86 | 88.6 | 3.000 | 224 | 34 | 34 | 36 | 42 | 42 | 43 | 48 | 50 | 54 | 55 | 60 |
| 90 | 86 | 96.2 | 6.000 | 366 | 49 | 49 | 49 | 50 | 54 | 59 | 59 _{δx>2} | 63 _{δx>2} | 64 _{δx>2} | 65 _{δx>2} | 70 _{δx>2} |
| 90 | 96 | 96.0 | 0.375 | 113 | 37 | 38 | 40 | 41 | 43 | 48 | 48 | 49 | 53 | 53 | 57 |
| 90 | 96 | 96.1 | 0.625 | 124 | 37 | 39 | 40 | 41 | 43 | 48 | 48 | 49 | 53 | 53 | 57 |
| 90 | 96 | 96.3 | 0.875 | 136 | 37 | 39 | 40 | 41 | 47 | 48 | 48 | 49 | 53 | 53 | 57 |
| 90 | 96 | 96.5 | 1.250 | 153 | 37 | 40 | 40 | 43 | 48 | 48 | 48 | 53 | 53 | 57 | 57 |
| 90 | 96 | 97.3 | 2.000 | 187 | 40 | 40 | 42 | 43 | 48 | 48 | 49 | 53 | 54 | 57 | 61 |
| 90 | 96 | 101.2 | 4.000 | 281 | 49 | 49 | 49 | 50 | 51 | 55 | 55 | 59 | 63 | 64 | 64 |
| 90 | 106 | 106.1 | 0.375 | 123 | 42 | 42 | 42 | 45 | 50 | 51 | 51 | 51 | 55 | 55 | 59 |
| 90 | 106 | 106.1 | 0.625 | 134 | 42 | 42 | 42 | 45 | 50 | 50 | 51 | 54 | 55 | 58 | 59 |
| 90 | 106 | 106.3 | 0.875 | 146 | 42 | 42 | 44 | 45 | 50 | 50 | 51 | 54 | 55 | 59 | 59 |
| 90 | 106 | 106.6 | 1.250 | 163 | 42 | 42 | 44 | 46 | 50 | 51 | 51 | 54 | 55 | 58 | 63 |
| 90 | 106 | 107.5 | 2.000 | 197 | 43 | 43 | 46 | 51 | 51 | 51 | 55 | 55 | 59 | 59 | 63 |
| 90 | 106 | 111.7 | 4.000 | 292 | 51 | 52 | 52 | 52 | 56 | 57 | 61 | 65 | 65 | 65 | 66 |
| 90 | 116 | 116.1 | 0.375 | 133 | 48 | 48 | 50 | 52 | 56 | 56 | 56 | 60 | 60 | 64 | 64 |
| 90 | 116 | 116.2 | 0.625 | 144 | 48 | 48 | 50 | 56 | 56 | 56 | 56 | 60 | 64 | 64 | 68 |
| 90 | 116 | 116.3 | 0.875 | 156 | 48 | 48 | 51 | 56 | 56 | 56 | 60 | 60 | 63 | 64 | 68 |
| 90 | 116 | 116.6 | 1.250 | 173 | 48 | 48 | 56 | 56 | 56 | 56 | 60 | 60 | 64 | 68 | 68 |
| 90 | 116 | 117.6 | 2.000 | 208 | 56 | 56 | 56 | 56 | 56 | 60 | 60 | 64 | 68 | 68 | 68 |
| 90 | 116 | 122.3 | 4.000 | 302 | 68 | 69 | 69 | 69 | 69 | 69 | 69 | 69 | 70 | 75 | 75 |
| 90 | 126 | 126.1 | 0.375 | 143 | 50 | 50 | 58 | 58 | 58 | 58 | 62 | 62 | 65 | 65 | 69 |
| 90 | 126 | 126.2 | 0.625 | 154 | 57 | 58 | 58 | 58 | 58 | 58 | 62 | 62 | 65 | 69 | 69 |
| 90 | 126 | 126.3 | 0.875 | 166 | 57 | 58 | 58 | 58 | 58 | 58 | 62 | 65 | 65 | 69 | 69 |
| 90 | 126 | 126.7 | 1.250 | 183 | 58 | 58 | 58 | 58 | 58 | 62 | 62 | 65 | 69 | 69 | 69 |
| 90 | 126 | 127.7 | 2.000 | 218 | 58 | 58 | 58 | 58 | 62 | 62 | 65 | 69 | 69 | 69 | 69 |
| 90 | 126 | 132.8 | 4.000 | 313 | 70 | 70 | 70 | 70 | 70 | 70 | 70 | 70 | 71 | 76 | 76 |
| 90 | 136 | 136.1 | 0.375 | 153 | 53 | 53 | 61 | 61 | 61 | 61 | 65 | 65 | 68 | 68 | 72 |
| 90 | 136 | 136.2 | 0.625 | 164 | 60 | 60 | 60 | 60 | 60 | 60 | 64 | 64 | 67 | 67 | 71 |
| 90 | 136 | 136.4 | 0.875 | 176 | 60 | 60 | 60 | 60 | 60 | 60 | 64 | 67 | 67 | 71 | 71 |
| 90 | 136 | 136.7 | 1.250 | 193 | 60 | 60 | 60 | 60 | 60 | 64 | 64 | 67 | 71 | 71 | 71 |
| 90 | 136 | 137.9 | 2.000 | 228 | 70 | 70 | 70 | 71 | 71 | 71 | 71 | 71 | 71 | 71 | 72 |
| 90 | 136 | 143.4 | 4.000 | 323 | 72 | 72 | 72 | 72 | 72 | 72 | 72 | 72 | 73 | 78 | 78 |

X - Bridging Requirements - Reference SP-Series Specification **Section 904.5 BRIDGING** on page 92

| | | | | | | | | | |
|-------|--------|--------|--------|--------|--------|--------|--------|--------|---------|
| 1 row | 2 rows | 3 rows | 4 rows | 5 rows | 6 rows | 7 rows | 8 rows | 9 rows | 10 rows |
|-------|--------|--------|--------|--------|--------|--------|--------|--------|---------|

Bearing Seat Depth - Profiles to the right of a colored line have a seat depth indicated in the chart below

| | | | |
|------------|-----|-----|--------------|
| Minimum 5" | 7½" | 10" | Maximum 12½" |
|------------|-----|-----|--------------|

Horizontal Deflection - Joist designs marked with the note 'δ_{x>2}' have a horizontal slip greater than 2". (Reference page 10)

SCISSOR JOIST (SPSC) TABLES

| Span ft | Chord Depth in | Ridge Depth in | Top Chord Pitch in/ft | Shape Depth in | Top Chord Uniform Load - Pounds per Linear Foot (plf) (ASD) | | | | | | | | | | |
|------------|----------------------|----------------------|--------------------------------|----------------------|---|-----------------------|-----------------------|-----------------------|-----------------------|-----------------------|-----------------------|-----------------------|-----------------------|-----------------------|------------------------|
| | | | | | 300 | 350 | 400 | 450 | 500 | 550 | 600 | 650 | 700 | 750 | 800 |
| | | | | | Joist Self-Weight - Pounds per Linear Foot (plf) | | | | | | | | | | |
| 100 | 50 | 50.0 | 0.500 | 75 | 32 | 36 | 44 | 50 | 54 | 58 | 62 | 66 | 73 | 78 | 82 |
| 100 | 50 | 50.1 | 0.750 | 88 | 32 | 36 | 44 | 50 | 54 | 58 | 62 | 69 | 73 | 78 | 90 |
| 100 | 50 | 50.2 | 1.000 | 100 | 32 | 36 | 44 | 50 | 54 | 58 | 62 | 69 | 73 | 78 | 91 |
| 100 | 50 | 50.4 | 1.500 | 125 | 32 | 36 | 44 | 50 | 55 | 58 | 62 | 70 | 73 | 82 | 91 |
| 100 | 50 | 51.5 | 3.000 | 202 | 33 _{δx>2} | 39 _{δx>2} | 45 _{δx>2} | 51 _{δx>2} | 56 _{δx>2} | 60 _{δx>2} | 67 _{δx>2} | 71 _{δx>2} | 79 _{δx>2} | 84 _{δx>2} | 93 _{δx>2} |
| 100 | 50 | 55.9 | 6.000 | 356 | 38 _{δx>2} | 46 _{δx>2} | 50 _{δx>2} | 60 _{δx>2} | 63 _{δx>2} | 72 _{δx>2} | 76 _{δx>2} | 84 _{δx>2} | 90 _{δx>2} | 99 _{δx>2} | 107 _{δx>2} |
| 100 | 58 | 58.1 | 0.500 | 83 | 29 | 33 | 36 | 45 | 47 | 52 | 56 | 60 | 63 | 67 | 70 |
| 100 | 58 | 58.1 | 0.750 | 96 | 30 | 33 | 38 | 45 | 47 | 52 | 56 | 60 | 63 | 67 | 71 |
| 100 | 58 | 58.2 | 1.000 | 108 | 30 | 33 | 38 | 45 | 47 | 55 | 56 | 60 | 64 | 67 | 71 |
| 100 | 58 | 58.5 | 1.500 | 133 | 30 | 35 | 38 | 46 | 47 | 56 | 56 | 60 | 64 | 67 | 71 |
| 100 | 58 | 59.8 | 3.000 | 210 | 31 _{δx>2} | 36 _{δx>2} | 39 _{δx>2} | 46 _{δx>2} | 48 _{δx>2} | 57 _{δx>2} | 57 _{δx>2} | 61 _{δx>2} | 69 _{δx>2} | 69 _{δx>2} | 77 _{δx>2} |
| 100 | 58 | 64.8 | 6.000 | 365 | 35 _{δx>2} | 45 _{δx>2} | 47 | 50 | 56 | 65 | 65 | 70 | 74 | 80 | 84 _{δx>2} |
| 100 | 66 | 66.0 | 0.375 | 85 | 28 | 32 | 36 | 39 | 45 | 48 | 53 | 57 | 61 | 65 | 68 |
| 100 | 66 | 66.1 | 0.625 | 97 | 28 | 33 | 36 | 39 | 45 | 48 | 57 | 57 | 61 | 65 | 69 |
| 100 | 66 | 66.2 | 0.875 | 110 | 28 | 33 | 36 | 39 | 45 | 48 | 57 | 57 | 61 | 65 | 69 |
| 100 | 66 | 66.4 | 1.250 | 129 | 28 | 33 | 36 | 40 | 46 | 49 | 57 | 57 | 62 | 65 | 69 |
| 100 | 66 | 66.9 | 2.000 | 167 | 30 | 33 | 36 | 44 | 46 | 49 | 57 | 58 | 62 | 69 | 70 |
| 100 | 66 | 69.6 | 4.000 | 270 | 32 _{δx>2} | 36 _{δx>2} | 40 _{δx>2} | 46 _{δx>2} | 48 _{δx>2} | 55 _{δx>2} | 60 _{δx>2} | 64 _{δx>2} | 68 _{δx>2} | 72 _{δx>2} | 73 _{δx>2} |
| 100 | 74 | 74.0 | 0.375 | 93 | 27 | 31 | 34 | 38 | 45 | 46 | 48 | 53 | 58 | 61 | 62 |
| 100 | 74 | 74.1 | 0.625 | 105 | 27 | 31 | 34 | 38 | 45 | 46 | 48 | 53 | 58 | 62 | 65 |
| 100 | 74 | 74.2 | 0.875 | 118 | 27 | 32 | 35 | 38 | 45 | 46 | 48 | 53 | 58 | 62 | 65 |
| 100 | 74 | 74.4 | 1.250 | 137 | 27 | 32 | 35 | 38 | 45 | 46 | 51 | 53 | 62 | 62 | 65 |
| 100 | 74 | 75.0 | 2.000 | 175 | 29 | 32 | 35 | 43 | 45 | 47 | 52 | 53 | 62 | 62 | 66 |
| 100 | 74 | 78.0 | 4.000 | 278 | 31 _{δx>2} | 34 _{δx>2} | 38 _{δx>2} | 45 _{δx>2} | 46 _{δx>2} | 52 _{δx>2} | 53 _{δx>2} | 59 _{δx>2} | 64 _{δx>2} | 68 _{δx>2} | 68 _{δx>2} |
| 100 | 82 | 82.0 | 0.375 | 101 | 28 | 32 | 34 | 38 | 44 | 46 | 48 | 53 | 54 | 63 | 63 |
| 100 | 82 | 82.1 | 0.625 | 113 | 29 | 32 | 34 | 38 | 44 | 46 | 48 | 53 | 55 | 62 | 63 |
| 100 | 82 | 82.2 | 0.875 | 126 | 29 | 34 | 34 | 38 | 44 | 46 | 48 | 53 | 55 | 63 | 63 |
| 100 | 82 | 82.4 | 1.250 | 145 | 29 | 34 | 36 | 38 | 44 | 46 | 48 | 53 | 55 | 63 | 67 |
| 100 | 82 | 83.1 | 2.000 | 183 | 31 | 34 | 36 | 43 | 45 | 47 | 52 | 54 | 59 | 63 | 67 |
| 100 | 82 | 86.4 | 4.000 | 286 | 33 | 37 | 39 | 45 | 47 | 53 | 54 _{δx>2} | 59 _{δx>2} | 65 | 69 | 70 |
| 100 | 90 | 90.0 | 0.375 | 109 | 31 | 34 | 34 | 37 | 43 | 45 | 47 | 51 | 52 | 57 | 59 |
| 100 | 90 | 90.1 | 0.625 | 121 | 31 | 34 | 36 | 37 | 43 | 45 | 47 | 51 | 52 | 57 | 59 |
| 100 | 90 | 90.2 | 0.875 | 134 | 31 | 34 | 36 | 37 | 43 | 45 | 47 | 51 | 52 | 57 | 62 |
| 100 | 90 | 90.5 | 1.250 | 153 | 33 | 34 | 36 | 42 | 43 | 45 | 50 | 51 | 55 | 57 | 63 |
| 100 | 90 | 91.2 | 2.000 | 191 | 33 | 34 | 37 | 42 | 44 | 45 | 51 | 51 | 56 | 61 | 63 |
| 100 | 90 | 94.9 | 4.000 | 295 | 36 | 38 | 45 | 46 | 47 | 53 | 58 | 60 | 65 | 67 | 67 |
| 100 | 98 | 98.0 | 0.375 | 117 | 39 | 40 | 41 | 43 | 48 | 49 | 49 | 53 | 53 | 57 | 62 |
| 100 | 98 | 98.1 | 0.625 | 129 | 39 | 40 | 41 | 43 | 48 | 49 | 49 | 53 | 53 | 57 | 62 |
| 100 | 98 | 98.3 | 0.875 | 142 | 39 | 40 | 41 | 48 | 49 | 49 | 53 | 53 | 57 | 57 | 62 |
| 100 | 98 | 98.5 | 1.250 | 161 | 40 | 40 | 43 | 48 | 49 | 49 | 53 | 53 | 57 | 61 | 62 |
| 100 | 98 | 99.4 | 2.000 | 199 | 40 | 41 | 43 | 48 | 49 | 53 | 53 | 57 | 57 | 61 | 63 |
| 100 | 98 | 103.3 | 4.000 | 303 | 48 | 49 | 49 | 49 | 54 | 54 | 58 | 62 | 63 | 63 | 69 |
| 100 | 106 | 106.1 | 0.375 | 125 | 41 | 42 | 43 | 50 | 50 | 50 | 54 | 54 | 58 | 58 | 62 |
| 100 | 106 | 106.1 | 0.625 | 137 | 41 | 41 | 43 | 50 | 50 | 50 | 54 | 54 | 58 | 58 | 62 |
| 100 | 106 | 106.3 | 0.875 | 150 | 41 | 41 | 45 | 50 | 50 | 50 | 54 | 54 | 58 | 58 | 62 |
| 100 | 106 | 106.6 | 1.250 | 169 | 42 | 42 | 45 | 50 | 50 | 50 | 54 | 58 | 58 | 62 | 63 |
| 100 | 106 | 107.5 | 2.000 | 207 | 42 | 44 | 50 | 51 | 51 | 55 | 55 | 59 | 63 | 63 | 63 |
| 100 | 106 | 111.7 | 4.000 | 312 | 51 | 52 | 52 | 52 | 56 | 61 | 65 | 65 | 66 | 66 | 71 |
| 100 | 114 | 114.1 | 0.375 | 133 | 50 | 50 | 53 | 58 | 58 | 58 | 62 | 62 | 66 | 70 | 70 |
| 100 | 114 | 114.2 | 0.625 | 145 | 50 | 52 | 53 | 58 | 58 | 58 | 62 | 62 | 66 | 70 | 70 |
| 100 | 114 | 114.3 | 0.875 | 158 | 50 | 52 | 53 | 58 | 58 | 62 | 62 | 62 | 66 | 70 | 71 |
| 100 | 114 | 114.6 | 1.250 | 177 | 50 | 52 | 58 | 58 | 58 | 62 | 62 | 66 | 70 | 70 | 71 |
| 100 | 114 | 115.6 | 2.000 | 216 | 58 | 58 | 58 | 58 | 62 | 62 | 66 | 70 | 70 | 71 | 71 |
| 100 | 114 | 120.2 | 4.000 | 320 | 72 | 72 | 72 | 73 | 73 | 73 | 74 | 74 | 80 | 80 | 89 |
| 100 | 122 | 122.1 | 0.375 | 141 | 49 | 51 | 57 | 58 | 58 | 62 | 62 | 66 | 69 | 69 | 69 |
| 100 | 122 | 122.2 | 0.625 | 153 | 57 | 57 | 57 | 58 | 58 | 62 | 62 | 66 | 69 | 69 | 70 |
| 100 | 122 | 122.3 | 0.875 | 166 | 57 | 57 | 57 | 58 | 58 | 62 | 65 | 66 | 69 | 69 | 70 |
| 100 | 122 | 122.7 | 1.250 | 185 | 57 | 57 | 57 | 58 | 62 | 62 | 65 | 69 | 69 | 69 | 70 |
| 100 | 122 | 123.7 | 2.000 | 224 | 57 | 57 | 57 | 58 | 62 | 66 | 69 | 69 | 69 | 69 | 74 |
| 100 | 122 | 128.6 | 4.000 | 329 | 74 | 74 | 74 | 74 | 75 | 75 | 76 | 76 | 81 | 82 | 90 |

X - Bridging Requirements - Reference SP-Series Specification **Section 904.5 BRIDGING** on page 92

| | | | | | | | | | |
|-------|--------|--------|--------|--------|--------|--------|--------|--------|---------|
| 1 row | 2 rows | 3 rows | 4 rows | 5 rows | 6 rows | 7 rows | 8 rows | 9 rows | 10 rows |
|-------|--------|--------|--------|--------|--------|--------|--------|--------|---------|

Bearing Seat Depth - Profiles to the right of a colored line have a seat depth indicated in the chart below

| | | | |
|------------|-----|-----|--------------|
| Minimum 5" | 7½" | 10" | Maximum 12½" |
|------------|-----|-----|--------------|

Horizontal Deflection - Joist designs marked with the note 'δ_{x>2}' have a horizontal slip greater than 2". (Reference page 10)

SCISSOR JOIST (SPSC) TABLES

| Span ft | Chord Depth in | Ridge Depth in | Top Chord Pitch in/ft | Shape Depth in | Top Chord Uniform Load - Pounds per Linear Foot (plf) (ASD) | | | | | | | | | | |
|------------|----------------------|----------------------|--------------------------------|----------------------|---|-----------------------|-----------------------|-----------------------|-----------------------|-----------------------|-----------------------|-----------------------|-----------------------|-----------------------|------------------------|
| | | | | | 300 | 350 | 400 | 450 | 500 | 550 | 600 | 650 | 700 | 750 | 800 |
| | | | | | Joist Self-Weight - Pounds per Linear Foot (plf) | | | | | | | | | | |
| 110 | 56 | 56.0 | 0.375 | 77 | 35 | 40 | 46 | 51 | 55 | 63 | 67 | 74 | 79 | 83 | 92 |
| 110 | 56 | 56.1 | 0.625 | 90 | 35 | 40 | 47 | 51 | 55 | 63 | 70 | 74 | 79 | 83 | 92 |
| 110 | 56 | 56.1 | 0.875 | 104 | 36 | 40 | 47 | 51 | 56 | 63 | 70 | 74 | 79 | 83 | 92 |
| 110 | 56 | 56.3 | 1.250 | 125 | 36 | 40 | 47 | 52 | 56 | 63 | 70 | 74 | 79 | 84 | 92 |
| 110 | 56 | 56.8 | 2.000 | 167 | 36 | 45 | 47 | 56 | 60 | 64 | 71 | 75 | 80 | 92 | 93 |
| 110 | 56 | 59.0 | 4.000 | 279 | 39 _{δx>2} | 45 _{δx>2} | 49 _{δx>2} | 57 _{δx>2} | 62 _{δx>2} | 69 _{δx>2} | 74 _{δx>2} | 82 _{δx>2} | 87 _{δx>2} | 95 _{δx>2} | 103 _{δx>2} |
| 110 | 64 | 64.0 | 0.375 | 85 | 32 | 36 | 44 | 47 | 56 | 56 | 63 | 67 | 71 | 76 | 79 |
| 110 | 64 | 64.1 | 0.625 | 98 | 32 | 38 | 44 | 47 | 56 | 56 | 63 | 67 | 71 | 76 | 80 |
| 110 | 64 | 64.2 | 0.875 | 112 | 32 | 38 | 44 | 48 | 56 | 56 | 64 | 67 | 72 | 76 | 80 |
| 110 | 64 | 64.3 | 1.250 | 133 | 32 | 38 | 44 | 48 | 56 | 56 | 64 | 68 | 72 | 76 | 80 |
| 110 | 64 | 64.9 | 2.000 | 175 | 34 | 38 | 45 | 48 | 56 | 57 | 61 | 68 | 72 | 77 | 81 |
| 110 | 64 | 67.5 | 4.000 | 287 | 35 _{δx>2} | 45 _{δx>2} | 46 _{δx>2} | 50 _{δx>2} | 58 _{δx>2} | 63 _{δx>2} | 67 _{δx>2} | 71 _{δx>2} | 79 _{δx>2} | 80 _{δx>2} | 92 _{δx>2} |
| 110 | 72 | 72.0 | 0.375 | 93 | 32 | 36 | 40 | 46 | 49 | 57 | 58 | 62 | 69 | 69 | 73 |
| 110 | 72 | 72.1 | 0.625 | 106 | 32 | 36 | 40 | 46 | 49 | 57 | 58 | 62 | 69 | 69 | 73 |
| 110 | 72 | 72.2 | 0.875 | 120 | 32 | 36 | 40 | 46 | 49 | 57 | 58 | 62 | 69 | 69 | 78 |
| 110 | 72 | 72.4 | 1.250 | 141 | 32 | 37 | 44 | 46 | 49 | 58 | 62 | 62 | 69 | 70 | 78 |
| 110 | 72 | 73.0 | 2.000 | 183 | 33 | 37 | 45 | 46 | 50 | 58 | 62 | 63 | 70 | 70 | 79 |
| 110 | 72 | 75.9 | 4.000 | 296 | 35 _{δx>2} | 45 _{δx>2} | 47 _{δx>2} | 48 _{δx>2} | 55 _{δx>2} | 64 _{δx>2} | 64 _{δx>2} | 69 _{δx>2} | 72 _{δx>2} | 78 _{δx>2} | 82 _{δx>2} |
| 110 | 80 | 80.0 | 0.375 | 101 | 33 | 35 | 39 | 45 | 47 | 52 | 54 | 61 | 62 | 66 | 70 |
| 110 | 80 | 80.1 | 0.625 | 114 | 33 | 35 | 39 | 45 | 47 | 52 | 54 | 61 | 65 | 66 | 70 |
| 110 | 80 | 80.2 | 0.875 | 128 | 33 | 35 | 39 | 45 | 46 | 52 | 54 | 62 | 65 | 66 | 70 |
| 110 | 80 | 80.4 | 1.250 | 149 | 33 | 35 | 39 | 45 | 47 | 52 | 54 | 62 | 66 | 66 | 70 |
| 110 | 80 | 81.1 | 2.000 | 191 | 33 | 35 | 44 | 45 | 47 | 53 | 58 | 62 | 66 | 66 | 75 |
| 110 | 80 | 84.3 | 4.000 | 304 | 36 _{δx>2} | 43 _{δx>2} | 45 _{δx>2} | 47 _{δx>2} | 52 _{δx>2} | 58 _{δx>2} | 60 _{δx>2} | 68 _{δx>2} | 69 _{δx>2} | 74 _{δx>2} | 78 _{δx>2} |
| 110 | 88 | 88.0 | 0.375 | 109 | 34 | 34 | 38 | 45 | 47 | 48 | 53 | 59 | 63 | 67 | 68 |
| 110 | 88 | 88.1 | 0.625 | 122 | 34 | 34 | 38 | 45 | 47 | 52 | 53 | 59 | 63 | 67 | 68 |
| 110 | 88 | 88.2 | 0.875 | 136 | 34 | 36 | 39 | 45 | 47 | 52 | 53 | 59 | 63 | 67 | 68 |
| 110 | 88 | 88.5 | 1.250 | 157 | 34 | 36 | 39 | 45 | 47 | 52 | 54 | 59 | 67 | 68 | 68 |
| 110 | 88 | 89.2 | 2.000 | 199 | 35 | 36 | 44 | 45 | 47 | 52 | 58 | 60 | 67 | 68 | 69 |
| 110 | 88 | 92.8 | 4.000 | 313 | 37 | 44 _{δx>2} | 45 _{δx>2} | 47 _{δx>2} | 53 _{δx>2} | 58 _{δx>2} | 60 _{δx>2} | 66 _{δx>2} | 70 _{δx>2} | 76 _{δx>2} | 76 _{δx>2} |
| 110 | 96 | 96.0 | 0.375 | 117 | 39 | 41 | 43 | 47 | 48 | 52 | 52 | 58 | 59 | 67 | 68 |
| 110 | 96 | 96.1 | 0.625 | 131 | 39 | 41 | 43 | 47 | 48 | 52 | 52 | 57 | 63 | 67 | 68 |
| 110 | 96 | 96.3 | 0.875 | 144 | 39 | 41 | 47 | 47 | 48 | 52 | 52 | 57 | 63 | 67 | 68 |
| 110 | 96 | 96.5 | 1.250 | 165 | 39 | 41 | 47 | 47 | 48 | 52 | 56 | 58 | 63 | 67 | 68 |
| 110 | 96 | 97.3 | 2.000 | 207 | 40 | 43 | 47 | 48 | 52 | 52 | 56 | 62 | 63 | 68 | 73 |
| 110 | 96 | 101.2 | 4.000 | 321 | 50 | 50 | 51 | 55 | 56 | 60 | 64 _{δx>2} | 66 _{δx>2} | 69 _{δx>2} | 78 | 78 _{δx>2} |
| 110 | 104 | 104.1 | 0.375 | 125 | 41 | 43 | 49 | 49 | 49 | 53 | 54 | 57 | 63 | 65 | 65 |
| 110 | 104 | 104.1 | 0.625 | 139 | 41 | 43 | 49 | 49 | 49 | 53 | 54 | 57 | 63 | 65 | 65 |
| 110 | 104 | 104.3 | 0.875 | 152 | 41 | 42 | 49 | 49 | 49 | 53 | 57 | 57 | 63 | 65 | 65 |
| 110 | 104 | 104.6 | 1.250 | 173 | 41 | 44 | 49 | 49 | 53 | 53 | 57 | 61 | 63 | 65 | 65 |
| 110 | 104 | 105.4 | 2.000 | 215 | 42 | 44 | 49 | 49 | 53 | 57 | 58 | 61 | 63 | 65 | 70 |
| 110 | 104 | 109.6 | 4.000 | 330 | 50 | 50 | 51 | 55 | 59 | 63 | 63 | 64 | 70 | 72 | 81 |
| 110 | 112 | 112.1 | 0.375 | 133 | 50 | 51 | 57 | 57 | 58 | 62 | 62 | 66 | 70 | 70 | 71 |
| 110 | 112 | 112.2 | 0.625 | 147 | 50 | 53 | 57 | 58 | 58 | 62 | 66 | 66 | 70 | 70 | 71 |
| 110 | 112 | 112.3 | 0.875 | 160 | 50 | 53 | 57 | 58 | 58 | 62 | 66 | 66 | 70 | 71 | 71 |
| 110 | 112 | 112.6 | 1.250 | 181 | 50 | 53 | 57 | 58 | 62 | 62 | 66 | 70 | 70 | 71 | 75 |
| 110 | 112 | 113.5 | 2.000 | 224 | 58 | 58 | 58 | 58 | 62 | 66 | 70 | 70 | 71 | 71 | 76 |
| 110 | 112 | 118.1 | 4.000 | 338 | 71 | 71 | 71 | 71 | 71 | 72 | 72 | 73 | 78 | 78 | 87 |
| 110 | 120 | 120.1 | 0.375 | 141 | 51 | 54 | 59 | 59 | 63 | 63 | 66 | 71 | 71 | 72 | 72 |
| 110 | 120 | 120.2 | 0.625 | 155 | 59 | 59 | 59 | 59 | 63 | 63 | 67 | 71 | 71 | 72 | 72 |
| 110 | 120 | 120.3 | 0.875 | 168 | 59 | 59 | 59 | 59 | 63 | 63 | 67 | 71 | 72 | 72 | 77 |
| 110 | 120 | 120.6 | 1.250 | 189 | 59 | 59 | 59 | 59 | 63 | 67 | 67 | 71 | 72 | 72 | 77 |
| 110 | 120 | 121.7 | 2.000 | 232 | 59 | 59 | 59 | 63 | 63 | 67 | 71 | 71 | 72 | 78 | 78 |
| 110 | 120 | 126.5 | 4.000 | 346 | 73 | 73 | 73 | 74 | 74 | 74 | 75 | 80 | 81 | 90 | 90 |
| 110 | 128 | 128.1 | 0.375 | 149 | 52 | 60 | 60 | 60 | 60 | 64 | 68 | 69 | 72 | 73 | 73 |
| 110 | 128 | 128.2 | 0.625 | 163 | 60 | 60 | 60 | 60 | 64 | 64 | 68 | 72 | 72 | 73 | 74 |
| 110 | 128 | 128.3 | 0.875 | 176 | 60 | 60 | 60 | 60 | 64 | 64 | 68 | 72 | 72 | 73 | 74 |
| 110 | 128 | 128.7 | 1.250 | 197 | 60 | 60 | 60 | 60 | 64 | 68 | 68 | 72 | 73 | 73 | 78 |
| 110 | 128 | 129.8 | 2.000 | 240 | 62 | 62 | 62 | 66 | 66 | 73 | 74 | 74 | 75 | 80 | 80 |
| 110 | 128 | 134.9 | 4.000 | 355 | 74 | 74 | 74 | 74 | 75 | 75 | 76 | 81 | 82 | 91 | 91 |

X - Bridging Requirements - Reference SP-Series Specification Section 904.5 BRIDGING on page 92

| | | | | | | | | | |
|-------|--------|--------|--------|--------|--------|--------|--------|--------|---------|
| 1 row | 2 rows | 3 rows | 4 rows | 5 rows | 6 rows | 7 rows | 8 rows | 9 rows | 10 rows |
|-------|--------|--------|--------|--------|--------|--------|--------|--------|---------|

Bearing Seat Depth - Profiles to the right of a colored line have a seat depth indicated in the chart below

| | | | |
|------------|-----|-----|--------------|
| Minimum 5" | 7½" | 10" | Maximum 12½" |
|------------|-----|-----|--------------|

Horizontal Deflection - Joist designs marked with the note 'δ_{x>2}' have a horizontal slip greater than 2". (Reference page 10)

SCISSOR JOIST (SPSC) TABLES

| Span ft | Chord Depth in | Ridge Depth in | Top Chord Pitch in/ft | Shape Depth in | Top Chord Uniform Load - Pounds per Linear Foot (plf) (ASD) | | | | | | | | | | |
|------------|----------------------|----------------------|--------------------------------|----------------------|---|-----------------------|-----------------------|-----------------------|-----------------------|-----------------------|-----------------------|-----------------------|------------------------|------------------------|------------------------|
| | | | | | 300 | 350 | 400 | 450 | 500 | 550 | 600 | 650 | 700 | 750 | 800 |
| | | | | | Joist Self-Weight - Pounds per Linear Foot (plf) | | | | | | | | | | |
| 120 | 60 | 60.0 | 0.375 | 83 | 39 | 47 | 52 | 56 | 63 | 71 | 74 | 83 | 92 | 100 | 101 |
| 120 | 60 | 60.1 | 0.625 | 98 | 39 | 47 | 52 | 56 | 63 | 71 | 74 | 83 | 92 | 100 | 101 |
| 120 | 60 | 60.2 | 0.875 | 113 | 39 | 47 | 52 | 56 | 63 | 71 | 79 | 83 | 92 | 100 | 101 |
| 120 | 60 | 60.3 | 1.250 | 135 | 39 | 47 | 52 | 56 | 63 | 71 | 79 | 84 | 92 | 100 | 101 |
| 120 | 60 | 60.8 | 2.000 | 181 | 44 | 47 | 56 | 60 | 64 | 71 | 80 | 84 | 93 | 101 | 113 |
| 120 | 60 | 63.2 | 4.000 | 303 | 45 _{δx>2} | 49 _{δx>2} | 58 _{δx>2} | 62 _{δx>2} | 70 _{δx>2} | 77 _{δx>2} | 82 _{δx>2} | 95 _{δx>2} | 103 _{δx>2} | 104 _{δx>2} | 116 _{δx>2} |
| 120 | 68 | 68.0 | 0.375 | 91 | 35 | 44 | 48 | 56 | 56 | 64 | 68 | 71 | 80 | 80 | 92 |
| 120 | 68 | 68.1 | 0.625 | 106 | 35 | 44 | 48 | 56 | 56 | 64 | 68 | 72 | 80 | 80 | 92 |
| 120 | 68 | 68.2 | 0.875 | 121 | 35 | 44 | 48 | 56 | 57 | 64 | 68 | 72 | 80 | 88 | 93 |
| 120 | 68 | 68.4 | 1.250 | 143 | 37 | 44 | 48 | 56 | 60 | 64 | 68 | 72 | 80 | 88 | 93 |
| 120 | 68 | 68.9 | 2.000 | 189 | 37 | 45 | 48 | 57 | 61 | 68 | 69 | 77 | 78 | 89 | 94 |
| 120 | 68 | 71.7 | 4.000 | 312 | 46 _{δx>2} | 47 _{δx>2} | 55 _{δx>2} | 60 _{δx>2} | 64 _{δx>2} | 72 _{δx>2} | 73 _{δx>2} | 81 _{δx>2} | 85 _{δx>2} | 94 _{δx>2} | 98 _{δx>2} |
| 120 | 76 | 76.0 | 0.375 | 99 | 34 | 40 | 46 | 50 | 57 | 58 | 65 | 69 | 72 | 78 | 81 |
| 120 | 76 | 76.1 | 0.625 | 114 | 35 | 40 | 46 | 50 | 57 | 58 | 65 | 69 | 73 | 78 | 81 |
| 120 | 76 | 76.2 | 0.875 | 129 | 35 | 40 | 46 | 50 | 57 | 62 | 65 | 69 | 73 | 78 | 82 |
| 120 | 76 | 76.4 | 1.250 | 151 | 35 | 40 | 46 | 50 | 58 | 62 | 66 | 69 | 73 | 78 | 82 |
| 120 | 76 | 77.0 | 2.000 | 197 | 36 | 45 | 46 | 50 | 58 | 62 | 69 | 70 | 74 | 79 | 90 |
| 120 | 76 | 80.1 | 4.000 | 320 | 44 _{δx>2} | 47 _{δx>2} | 48 _{δx>2} | 56 _{δx>2} | 64 _{δx>2} | 68 _{δx>2} | 72 _{δx>2} | 78 _{δx>2} | 82 _{δx>2} | 91 _{δx>2} | 94 _{δx>2} |
| 120 | 84 | 84.0 | 0.375 | 107 | 33 | 39 | 45 | 47 | 53 | 58 | 62 | 66 | 70 | 70 | 78 |
| 120 | 84 | 84.1 | 0.625 | 122 | 33 | 39 | 45 | 47 | 53 | 58 | 62 | 66 | 69 | 70 | 78 |
| 120 | 84 | 84.2 | 0.875 | 137 | 33 | 39 | 45 | 47 | 54 | 58 | 62 | 66 | 70 | 75 | 78 |
| 120 | 84 | 84.5 | 1.250 | 159 | 35 | 39 | 46 | 47 | 54 | 62 | 62 | 66 | 70 | 75 | 79 |
| 120 | 84 | 85.2 | 2.000 | 205 | 35 | 44 | 46 | 47 | 54 | 62 | 63 | 67 | 70 | 75 | 79 |
| 120 | 84 | 88.5 | 4.000 | 329 | 43 _{δx>2} | 46 _{δx>2} | 52 _{δx>2} | 53 _{δx>2} | 60 _{δx>2} | 68 _{δx>2} | 69 _{δx>2} | 74 _{δx>2} | 78 _{δx>2} | 87 _{δx>2} | 91 _{δx>2} |
| 120 | 92 | 92.0 | 0.375 | 115 | 35 | 39 | 45 | 47 | 50 | 55 | 63 | 64 | 68 | 72 | 77 |
| 120 | 92 | 92.1 | 0.625 | 130 | 35 | 39 | 45 | 47 | 53 | 55 | 63 | 67 | 68 | 72 | 77 |
| 120 | 92 | 92.2 | 0.875 | 145 | 35 | 39 | 46 | 47 | 53 | 55 | 63 | 67 | 68 | 72 | 77 |
| 120 | 92 | 92.5 | 1.250 | 167 | 36 | 39 | 46 | 47 | 53 | 55 | 63 | 67 | 68 | 72 | 77 |
| 120 | 92 | 93.3 | 2.000 | 213 | 36 | 44 | 46 | 47 | 54 | 59 | 64 | 68 | 69 | 77 | 77 |
| 120 | 92 | 97.0 | 4.000 | 337 | 49 | 50 _{δx>2} | 54 _{δx>2} | 55 _{δx>2} | 60 _{δx>2} | 65 _{δx>2} | 70 _{δx>2} | 76 _{δx>2} | 77 _{δx>2} | 90 _{δx>2} | 90 _{δx>2} |
| 120 | 100 | 100.0 | 0.375 | 123 | 41 | 42 | 49 | 49 | 49 | 55 | 60 | 65 | 69 | 69 | 78 |
| 120 | 100 | 100.1 | 0.625 | 138 | 41 | 44 | 49 | 49 | 53 | 55 | 60 | 68 | 69 | 69 | 78 |
| 120 | 100 | 100.3 | 0.875 | 153 | 41 | 44 | 49 | 49 | 53 | 55 | 60 | 68 | 69 | 70 | 78 |
| 120 | 100 | 100.5 | 1.250 | 176 | 42 | 44 | 49 | 49 | 53 | 55 | 60 | 69 | 69 | 70 | 78 |
| 120 | 100 | 101.4 | 2.000 | 221 | 43 | 49 | 50 | 50 | 54 | 59 | 65 | 69 | 70 | 75 | 79 |
| 120 | 100 | 105.4 | 4.000 | 345 | 51 | 52 | 56 | 60 _{δx>2} | 64 _{δx>2} | 66 _{δx>2} | 68 _{δx>2} | 77 _{δx>2} | 78 _{δx>2} | 87 _{δx>2} | 91 _{δx>2} |
| 120 | 108 | 108.1 | 0.375 | 131 | 42 | 45 | 50 | 50 | 54 | 54 | 59 | 64 | 69 | 69 | 75 |
| 120 | 108 | 108.1 | 0.625 | 146 | 42 | 45 | 50 | 50 | 54 | 54 | 59 | 65 | 69 | 69 | 75 |
| 120 | 108 | 108.3 | 0.875 | 161 | 43 | 45 | 50 | 50 | 54 | 58 | 59 | 65 | 69 | 70 | 75 |
| 120 | 108 | 108.6 | 1.250 | 184 | 43 | 49 | 50 | 50 | 54 | 58 | 59 | 65 | 69 | 74 | 75 |
| 120 | 108 | 109.5 | 2.000 | 229 | 45 | 50 | 50 | 54 | 54 | 58 | 63 | 65 | 65 | 74 | 76 |
| 120 | 108 | 113.8 | 4.000 | 354 | 68 | 69 | 69 | 69 | 69 | 70 | 71 | 77 | 86 | 86 | 86 _{δx>2} |
| 120 | 116 | 116.1 | 0.375 | 139 | 50 | 53 | 58 | 58 | 62 | 62 | 66 | 70 | 70 | 71 | 75 |
| 120 | 116 | 116.2 | 0.625 | 154 | 51 | 53 | 58 | 58 | 62 | 66 | 66 | 70 | 70 | 71 | 75 |
| 120 | 116 | 116.3 | 0.875 | 169 | 51 | 57 | 58 | 58 | 62 | 65 | 69 | 70 | 70 | 75 | 76 |
| 120 | 116 | 116.6 | 1.250 | 192 | 51 | 58 | 58 | 62 | 62 | 66 | 70 | 70 | 70 | 75 | 75 |
| 120 | 116 | 117.6 | 2.000 | 238 | 58 | 58 | 58 | 62 | 66 | 66 | 70 | 70 | 75 | 76 | 84 |
| 120 | 116 | 122.3 | 4.000 | 362 | 71 | 71 | 71 | 72 | 72 | 73 | 78 | 78 | 87 | 87 | 88 |
| 120 | 124 | 124.0 | 0.250 | 139 | 53 | 55 | 60 | 60 | 64 | 68 | 68 | 72 | 73 | 74 | 79 |
| 120 | 124 | 124.1 | 0.500 | 154 | 59 | 60 | 60 | 60 | 64 | 68 | 68 | 72 | 73 | 74 | 79 |
| 120 | 124 | 124.2 | 0.750 | 169 | 59 | 60 | 60 | 61 | 64 | 68 | 72 | 72 | 73 | 79 | 79 |
| 120 | 124 | 124.4 | 1.000 | 184 | 59 | 60 | 60 | 64 | 64 | 68 | 72 | 72 | 73 | 79 | 79 |
| 120 | 124 | 125.0 | 1.500 | 215 | 59 | 60 | 60 | 64 | 68 | 68 | 72 | 73 | 73 | 79 | 87 |
| 120 | 124 | 127.8 | 3.000 | 308 | 71 | 71 | 72 | 72 | 73 | 73 | 73 | 78 | 78 | 86 | 87 |
| 120 | 132 | 132.0 | 0.250 | 147 | 53 | 56 | 61 | 61 | 65 | 65 | 69 | 73 | 73 | 74 | 80 |
| 120 | 132 | 132.1 | 0.500 | 162 | 60 | 61 | 61 | 61 | 65 | 69 | 69 | 73 | 73 | 74 | 80 |
| 120 | 132 | 132.3 | 0.750 | 177 | 60 | 60 | 61 | 61 | 65 | 69 | 69 | 73 | 73 | 74 | 79 |
| 120 | 132 | 132.5 | 1.000 | 192 | 60 | 60 | 61 | 61 | 65 | 68 | 72 | 73 | 73 | 74 | 80 |
| 120 | 132 | 133.0 | 1.500 | 223 | 62 | 62 | 62 | 66 | 70 | 70 | 74 | 74 | 75 | 81 | 81 |
| 120 | 132 | 136.1 | 3.000 | 316 | 72 | 72 | 73 | 73 | 74 | 74 | 74 | 79 | 79 | 88 | 89 |

X - Bridging Requirements - Reference SP-Series Specification **Section 904.5 BRIDGING** on page 92

| | | | | | | | | | |
|-------|--------|--------|--------|--------|--------|--------|--------|--------|---------|
| 1 row | 2 rows | 3 rows | 4 rows | 5 rows | 6 rows | 7 rows | 8 rows | 9 rows | 10 rows |
|-------|--------|--------|--------|--------|--------|--------|--------|--------|---------|

Bearing Seat Depth - Profiles to the right of a colored line have a seat depth indicated in the chart below

| | | | |
|------------|-----|-----|--------------|
| Minimum 5" | 7½" | 10" | Maximum 12½" |
|------------|-----|-----|--------------|

Horizontal Deflection - Joist designs marked with the note 'δ_{x>2}' have a horizontal slip greater than 2". (Reference page 10)

SCISSOR JOIST (SPSC) TABLES

| Span ft | Chord Depth in | Ridge Depth in | Top Chord Pitch in/ft | Shape Depth in | Top Chord Uniform Load - Pounds per Linear Foot (plf) (ASD) | | | | | | | | | | |
|------------|----------------------|----------------------|--------------------------------|----------------------|---|-----------------------|-----------------------|-----------------------|-----------------------|-----------------------|-----------------------|-----------------------|------------------------|------------------------|------------------------|
| | | | | | 300 | 350 | 400 | 450 | 500 | 550 | 600 | 650 | 700 | 750 | 800 |
| | | | | | Joist Self-Weight - Pounds per Linear Foot (plf) | | | | | | | | | | |
| 130 | 66 | 66.0 | 0.375 | 90 | 45 | 47 | 56 | 64 | 67 | 71 | 80 | 92 | 93 | 101 | 112 |
| 130 | 66 | 66.1 | 0.625 | 107 | 45 | 47 | 56 | 64 | 67 | 71 | 80 | 92 | 93 | 101 | 112 |
| 130 | 66 | 66.2 | 0.875 | 123 | 45 | 48 | 56 | 64 | 68 | 71 | 80 | 92 | 93 | 101 | 112 |
| 130 | 66 | 66.4 | 1.250 | 148 | 46 | 48 | 56 | 64 | 68 | 71 | 80 | 93 | 93 | 101 | 113 |
| 130 | 66 | 66.9 | 2.000 | 197 | 46 | 48 | 57 | 64 | 68 | 80 | 81 | 94 | 94 | 102 | 113 |
| 130 | 66 | 69.6 | 4.000 | 330 | 48 _{δx>2} | 54 _{δx>2} | 63 _{δx>2} | 70 _{δx>2} | 74 _{δx>2} | 80 _{δx>2} | 88 _{δx>2} | 97 _{δx>2} | 105 _{δx>2} | 117 _{δx>2} | 118 _{δx>2} |
| 130 | 72 | 72.0 | 0.375 | 96 | 43 | 46 | 56 | 56 | 64 | 68 | 72 | 80 | 92 | 93 | 101 |
| 130 | 72 | 72.1 | 0.625 | 113 | 43 | 46 | 56 | 60 | 64 | 68 | 76 | 80 | 89 | 93 | 101 |
| 130 | 72 | 72.2 | 0.875 | 129 | 43 | 46 | 56 | 60 | 64 | 68 | 76 | 80 | 89 | 93 | 101 |
| 130 | 72 | 72.4 | 1.250 | 154 | 44 | 47 | 56 | 60 | 68 | 68 | 77 | 80 | 89 | 94 | 102 |
| 130 | 72 | 73.0 | 2.000 | 203 | 44 | 47 | 57 | 61 | 69 | 69 | 77 | 81 | 90 | 94 | 103 |
| 130 | 72 | 75.9 | 4.000 | 336 | 47 _{δx>2} | 53 _{δx>2} | 59 _{δx>2} | 64 _{δx>2} | 72 _{δx>2} | 73 _{δx>2} | 81 _{δx>2} | 93 _{δx>2} | 98 _{δx>2} | 99 _{δx>2} | 118 _{δx>2} |
| 130 | 78 | 78.0 | 0.375 | 102 | 40 | 46 | 49 | 58 | 61 | 65 | 69 | 77 | 81 | 89 | 94 |
| 130 | 78 | 78.1 | 0.625 | 119 | 40 | 46 | 49 | 58 | 61 | 68 | 69 | 77 | 81 | 89 | 94 |
| 130 | 78 | 78.2 | 0.875 | 135 | 40 | 46 | 49 | 58 | 61 | 69 | 69 | 77 | 81 | 89 | 94 |
| 130 | 78 | 78.4 | 1.250 | 160 | 40 | 46 | 49 | 58 | 61 | 69 | 69 | 77 | 82 | 90 | 94 |
| 130 | 78 | 79.1 | 2.000 | 209 | 45 | 46 | 49 | 58 | 62 | 69 | 70 | 78 | 82 | 90 | 95 |
| 130 | 78 | 82.2 | 4.000 | 342 | 46 _{δx>2} | 52 _{δx>2} | 55 _{δx>2} | 68 _{δx>2} | 68 _{δx>2} | 72 _{δx>2} | 78 _{δx>2} | 90 _{δx>2} | 93 _{δx>2} | 94 _{δx>2} | 99 _{δx>2} |
| 130 | 84 | 84.0 | 0.375 | 108 | 39 | 46 | 48 | 58 | 58 | 63 | 70 | 73 | 79 | 82 | 91 |
| 130 | 84 | 84.1 | 0.625 | 125 | 39 | 46 | 48 | 58 | 58 | 63 | 70 | 73 | 79 | 82 | 91 |
| 130 | 84 | 84.2 | 0.875 | 141 | 39 | 46 | 48 | 58 | 62 | 63 | 70 | 73 | 79 | 91 | 91 |
| 130 | 84 | 84.5 | 1.250 | 166 | 39 | 46 | 49 | 58 | 62 | 63 | 70 | 74 | 79 | 91 | 91 |
| 130 | 84 | 85.2 | 2.000 | 215 | 40 | 46 | 49 | 59 | 63 | 67 | 71 | 79 | 80 | 92 | 92 |
| 130 | 84 | 88.5 | 4.000 | 349 | 46 _{δx>2} | 53 _{δx>2} | 55 _{δx>2} | 68 _{δx>2} | 69 _{δx>2} | 70 _{δx>2} | 79 _{δx>2} | 83 _{δx>2} | 92 _{δx>2} | 95 _{δx>2} | 96 _{δx>2} |
| 130 | 90 | 90.0 | 0.375 | 114 | 38 | 46 | 47 | 54 | 58 | 62 | 66 | 70 | 75 | 79 | 91 |
| 130 | 90 | 90.1 | 0.625 | 131 | 38 | 46 | 47 | 54 | 58 | 62 | 67 | 70 | 75 | 80 | 91 |
| 130 | 90 | 90.2 | 0.875 | 147 | 38 | 46 | 47 | 54 | 62 | 62 | 67 | 70 | 75 | 80 | 91 |
| 130 | 90 | 90.5 | 1.250 | 172 | 38 | 46 | 48 | 54 | 62 | 66 | 67 | 71 | 76 | 88 | 92 |
| 130 | 90 | 91.2 | 2.000 | 221 | 43 | 46 | 48 | 55 | 63 | 67 | 67 | 76 | 77 | 88 | 92 |
| 130 | 90 | 94.9 | 4.000 | 355 | 46 _{δx>2} | 49 _{δx>2} | 55 _{δx>2} | 62 _{δx>2} | 70 _{δx>2} | 71 _{δx>2} | 71 _{δx>2} | 80 _{δx>2} | 93 _{δx>2} | 93 _{δx>2} | 97 _{δx>2} |
| 130 | 96 | 96.0 | 0.375 | 120 | 43 | 48 | 48 | 53 | 55 | 64 | 68 | 68 | 77 | 77 | 89 |
| 130 | 96 | 96.1 | 0.625 | 137 | 43 | 48 | 48 | 53 | 59 | 64 | 68 | 68 | 77 | 77 | 89 |
| 130 | 96 | 96.3 | 0.875 | 153 | 43 | 48 | 48 | 54 | 59 | 64 | 68 | 69 | 77 | 77 | 89 |
| 130 | 96 | 96.5 | 1.250 | 178 | 47 | 48 | 48 | 54 | 59 | 67 | 68 | 69 | 77 | 85 | 89 |
| 130 | 96 | 97.3 | 2.000 | 227 | 48 | 48 | 52 | 54 | 60 | 68 | 68 | 74 | 77 | 86 | 90 |
| 130 | 96 | 101.2 | 4.000 | 361 | 49 _{δx>2} | 53 _{δx>2} | 54 _{δx>2} | 63 _{δx>2} | 65 _{δx>2} | 70 _{δx>2} | 75 _{δx>2} | 76 _{δx>2} | 89 _{δx>2} | 89 _{δx>2} | 93 _{δx>2} |
| 130 | 102 | 102.0 | 0.250 | 118 | 43 | 49 | 49 | 50 | 55 | 61 | 69 | 69 | 73 | 78 | 79 |
| 130 | 102 | 102.1 | 0.500 | 135 | 43 | 49 | 49 | 50 | 55 | 61 | 69 | 69 | 73 | 78 | 78 |
| 130 | 102 | 102.2 | 0.750 | 151 | 45 | 49 | 49 | 53 | 55 | 61 | 69 | 69 | 73 | 78 | 86 |
| 130 | 102 | 102.4 | 1.000 | 167 | 45 | 49 | 49 | 53 | 55 | 61 | 69 | 69 | 77 | 78 | 86 |
| 130 | 102 | 102.8 | 1.500 | 200 | 45 | 49 | 49 | 53 | 59 | 61 | 69 | 69 | 78 | 78 | 87 |
| 130 | 102 | 105.1 | 3.000 | 300 | 51 | 52 | 55 | 59 | 64 | 70 | 71 | 77 | 88 | 89 | 92 |
| 130 | 108 | 108.0 | 0.250 | 124 | 44 | 50 | 50 | 51 | 56 | 61 | 69 | 70 | 71 | 79 | 79 |
| 130 | 108 | 108.1 | 0.500 | 141 | 46 | 50 | 51 | 54 | 56 | 61 | 69 | 70 | 71 | 79 | 79 |
| 130 | 108 | 108.2 | 0.750 | 157 | 46 | 50 | 51 | 54 | 56 | 62 | 69 | 70 | 71 | 79 | 87 |
| 130 | 108 | 108.4 | 1.000 | 173 | 46 | 50 | 50 | 54 | 56 | 62 | 70 | 71 | 75 | 79 | 87 |
| 130 | 108 | 108.8 | 1.500 | 206 | 51 | 51 | 51 | 55 | 60 | 66 | 70 | 71 | 76 | 79 | 88 |
| 130 | 108 | 111.3 | 3.000 | 306 | 52 | 52 | 56 | 60 | 65 | 67 | 72 | 77 | 78 | 90 | 90 |
| 130 | 114 | 114.0 | 0.250 | 130 | 53 | 57 | 58 | 62 | 62 | 66 | 70 | 70 | 71 | 76 | 88 |
| 130 | 114 | 114.1 | 0.500 | 147 | 52 | 57 | 57 | 62 | 65 | 66 | 70 | 70 | 75 | 76 | 88 |
| 130 | 114 | 114.2 | 0.750 | 163 | 52 | 57 | 58 | 62 | 65 | 66 | 70 | 70 | 75 | 76 | 88 |
| 130 | 114 | 114.4 | 1.000 | 179 | 57 | 57 | 58 | 62 | 65 | 69 | 70 | 70 | 75 | 76 | 88 |
| 130 | 114 | 114.9 | 1.500 | 212 | 57 | 58 | 58 | 62 | 66 | 70 | 70 | 71 | 76 | 85 | 88 |
| 130 | 114 | 117.5 | 3.000 | 313 | 60 | 60 | 64 | 69 | 73 | 73 | 73 | 78 | 87 | 88 | 93 |
| 130 | 120 | 120.0 | 0.250 | 136 | 54 | 59 | 59 | 63 | 67 | 67 | 71 | 71 | 76 | 76 | 85 |
| 130 | 120 | 120.1 | 0.500 | 153 | 58 | 59 | 59 | 63 | 67 | 70 | 71 | 71 | 76 | 76 | 85 |
| 130 | 120 | 120.2 | 0.750 | 169 | 58 | 59 | 59 | 63 | 67 | 70 | 71 | 71 | 76 | 84 | 85 |
| 130 | 120 | 120.4 | 1.000 | 185 | 59 | 59 | 63 | 63 | 67 | 70 | 71 | 71 | 76 | 84 | 85 |
| 130 | 120 | 120.9 | 1.500 | 218 | 59 | 59 | 63 | 66 | 67 | 71 | 71 | 71 | 76 | 84 | 85 |
| 130 | 120 | 123.7 | 3.000 | 319 | 70 | 70 | 70 | 71 | 71 | 72 | 77 | 78 | 86 | 86 | 86 |

X - Bridging Requirements - Reference SP-Series Specification **Section 904.5 BRIDGING** on page 92

| | | | | | | | | | |
|-------|--------|--------|--------|--------|--------|--------|--------|--------|---------|
| 1 row | 2 rows | 3 rows | 4 rows | 5 rows | 6 rows | 7 rows | 8 rows | 9 rows | 10 rows |
|-------|--------|--------|--------|--------|--------|--------|--------|--------|---------|

Bearing Seat Depth - Profiles to the right of a colored line have a seat depth indicated in the chart below

| | | | |
|------------|-----|-----|--------------|
| Minimum 5" | 7½" | 10" | Maximum 12½" |
|------------|-----|-----|--------------|

Horizontal Deflection - Joist designs marked with the note 'δ_{x>2}' have a horizontal slip greater than 2". (Reference page 10)

SCISSOR JOIST (SPSC) TABLES

| Span ft | Chord Depth in | Ridge Depth in | Top Chord Pitch in/ft | Shape Depth in | Top Chord Uniform Load - Pounds per Linear Foot (plf) (ASD) | | | | | | | | | | |
|------------|----------------------|----------------------|--------------------------------|----------------------|---|-----------------------|-----------------------|-----------------------|-----------------------|-----------------------|-----------------------|------------------------|------------------------|------------------------|------------------------|
| | | | | | 300 | 350 | 400 | 450 | 500 | 550 | 600 | 650 | 700 | 750 | 800 |
| | | | | | Joist Self-Weight - Pounds per Linear Foot (plf) | | | | | | | | | | |
| 140 | 70 | 70.0 | 0.375 | 96 | 48 | 56 | 60 | 67 | 72 | 80 | 92 | 93 | 101 | 112 | 123 |
| 140 | 70 | 70.1 | 0.625 | 114 | 48 | 56 | 60 | 67 | 72 | 80 | 92 | 101 | 101 | 112 | 123 |
| 140 | 70 | 70.2 | 0.875 | 131 | 48 | 56 | 60 | 68 | 72 | 80 | 93 | 101 | 101 | 113 | 123 |
| 140 | 70 | 70.4 | 1.250 | 158 | 48 | 56 | 60 | 68 | 72 | 80 | 93 | 101 | 112 | 113 | 124 |
| 140 | 70 | 71.0 | 2.000 | 211 | 48 | 57 | 61 _{8x>2} | 68 _{8x>2} | 77 _{8x>2} | 85 | 93 _{8x>2} | 102 | 113 | 114 _{8x>2} | 124 |
| 140 | 70 | 73.8 | 4.000 | 354 | 54 _{8x>2} | 62 _{8x>2} | 67 _{8x>2} | 74 _{8x>2} | 80 _{8x>2} | 92 _{8x>2} | 97 _{8x>2} | 105 _{8x>2} | 117 _{8x>2} | 128 _{8x>2} | 129 _{8x>2} |
| 140 | 76 | 76.0 | 0.375 | 102 | 47 | 53 | 57 | 65 | 69 | 72 | 81 | 93 | 94 | 102 | 113 |
| 140 | 76 | 76.1 | 0.625 | 120 | 47 | 53 | 57 | 65 | 69 | 73 | 81 | 93 | 94 | 102 | 114 |
| 140 | 76 | 76.2 | 0.875 | 137 | 47 | 53 | 57 | 65 | 69 | 77 | 81 | 94 | 94 | 102 | 114 |
| 140 | 76 | 76.4 | 1.250 | 164 | 47 | 53 | 57 | 65 | 69 | 78 | 81 | 94 | 95 | 102 | 114 |
| 140 | 76 | 77.0 | 2.000 | 217 | 48 | 57 | 61 | 69 | 70 | 78 | 82 | 95 | 95 | 114 | 115 |
| 140 | 76 | 80.1 | 4.000 | 360 | 52 _{8x>2} | 58 _{8x>2} | 67 | 71 | 77 | 80 _{8x>2} | 92 _{8x>2} | 97 _{8x>2} | 98 _{8x>2} | 117 _{8x>2} | 118 _{8x>2} |
| 140 | 82 | 82.0 | 0.250 | 100 | 46 | 49 | 58 | 61 | 69 | 73 | 77 | 81 | 94 | 94 | 102 |
| 140 | 82 | 82.1 | 0.500 | 117 | 46 | 49 | 58 | 61 | 69 | 69 | 77 | 81 | 94 | 94 | 102 |
| 140 | 82 | 82.2 | 0.750 | 135 | 46 | 49 | 58 | 61 | 69 | 70 | 78 | 89 | 94 | 94 | 113 |
| 140 | 82 | 82.3 | 1.000 | 152 | 46 | 49 | 58 | 61 | 69 | 70 | 78 | 89 | 94 | 95 | 114 |
| 140 | 82 | 82.6 | 1.500 | 188 | 46 | 48 | 58 | 62 | 69 | 70 | 78 | 90 | 95 | 95 | 114 |
| 140 | 82 | 84.5 | 3.000 | 295 | 47 _{8x>2} | 53 _{8x>2} | 62 _{8x>2} | 67 _{8x>2} | 71 _{8x>2} | 76 _{8x>2} | 80 _{8x>2} | 92 _{8x>2} | 96 _{8x>2} | 97 _{8x>2} | 116 _{8x>2} |
| 140 | 88 | 88.0 | 0.250 | 106 | 45 | 48 | 54 | 62 | 66 | 70 | 74 | 79 | 90 | 96 | 96 |
| 140 | 88 | 88.1 | 0.500 | 123 | 45 | 49 | 54 | 62 | 66 | 70 | 78 | 79 | 90 | 96 | 96 |
| 140 | 88 | 88.2 | 0.750 | 141 | 45 | 49 | 54 | 62 | 66 | 70 | 79 | 79 | 91 | 96 | 96 |
| 140 | 88 | 88.3 | 1.000 | 158 | 46 | 49 | 54 | 63 | 66 | 71 | 79 | 79 | 91 | 96 | 97 |
| 140 | 88 | 88.7 | 1.500 | 194 | 46 | 49 | 54 | 63 | 67 | 71 | 79 | 80 | 91 | 97 | 97 |
| 140 | 88 | 90.7 | 3.000 | 301 | 47 _{8x>2} | 54 _{8x>2} | 59 _{8x>2} | 68 _{8x>2} | 68 _{8x>2} | 72 _{8x>2} | 81 _{8x>2} | 90 _{8x>2} | 94 _{8x>2} | 99 _{8x>2} | 111 _{8x>2} |
| 140 | 94 | 94.0 | 0.250 | 112 | 45 | 48 | 51 | 59 | 64 | 71 | 71 | 80 | 81 | 92 | 97 |
| 140 | 94 | 94.1 | 0.500 | 129 | 45 | 48 | 51 | 59 | 64 | 71 | 71 | 80 | 81 | 92 | 97 |
| 140 | 94 | 94.2 | 0.750 | 147 | 45 | 48 | 55 | 59 | 64 | 71 | 71 | 80 | 81 | 93 | 97 |
| 140 | 94 | 94.3 | 1.000 | 164 | 45 | 48 | 55 | 60 | 64 | 71 | 71 | 80 | 89 | 93 | 97 |
| 140 | 94 | 94.7 | 1.500 | 200 | 46 | 48 | 55 | 63 | 68 | 71 | 72 | 81 | 89 | 93 | 98 |
| 140 | 94 | 96.9 | 3.000 | 307 | 48 | 52 _{8x>2} | 58 _{8x>2} | 67 _{8x>2} | 68 _{8x>2} | 74 _{8x>2} | 77 _{8x>2} | 90 _{8x>2} | 91 _{8x>2} | 94 _{8x>2} | 106 _{8x>2} |
| 140 | 100 | 100.0 | 0.250 | 118 | 48 | 48 | 50 | 55 | 63 | 68 | 72 | 77 | 80 | 89 | 93 |
| 140 | 100 | 100.1 | 0.500 | 135 | 48 | 48 | 53 | 55 | 63 | 68 | 72 | 77 | 80 | 89 | 93 |
| 140 | 100 | 100.2 | 0.750 | 153 | 48 | 48 | 53 | 55 | 64 | 68 | 72 | 77 | 80 | 89 | 93 |
| 140 | 100 | 100.3 | 1.000 | 170 | 48 | 48 | 53 | 59 | 67 | 68 | 72 | 77 | 88 | 89 | 93 |
| 140 | 100 | 100.8 | 1.500 | 206 | 48 | 49 | 54 | 59 | 67 | 68 | 72 | 77 | 89 | 89 | 93 |
| 140 | 100 | 103.1 | 3.000 | 313 | 49 | 53 | 59 _{8x>2} | 64 _{8x>2} | 69 _{8x>2} | 70 _{8x>2} | 78 _{8x>2} | 87 _{8x>2} | 91 _{8x>2} | 92 _{8x>2} | 95 _{8x>2} |
| 140 | 106 | 106.0 | 0.250 | 124 | 50 | 50 | 54 | 56 | 65 | 69 | 70 | 78 | 79 | 91 | 92 |
| 140 | 106 | 106.1 | 0.500 | 141 | 50 | 50 | 54 | 56 | 65 | 70 | 70 | 78 | 79 | 91 | 92 |
| 140 | 106 | 106.2 | 0.750 | 159 | 50 | 50 | 54 | 60 | 69 | 70 | 70 | 78 | 79 | 91 | 92 |
| 140 | 106 | 106.4 | 1.000 | 176 | 50 | 50 | 54 | 60 | 69 | 70 | 70 | 78 | 87 | 91 | 92 |
| 140 | 106 | 106.8 | 1.500 | 212 | 50 | 50 | 55 | 60 | 65 | 70 | 75 | 78 | 87 | 91 | 92 |
| 140 | 106 | 109.3 | 3.000 | 319 | 51 | 55 | 59 | 64 | 66 _{8x>2} | 71 | 76 _{8x>2} | 88 | 89 _{8x>2} | 93 _{8x>2} | 94 _{8x>2} |
| 140 | 112 | 112.0 | 0.250 | 130 | 58 | 58 | 62 | 62 | 66 | 70 | 71 | 79 | 79 | 92 | 92 |
| 140 | 112 | 112.1 | 0.500 | 147 | 58 | 58 | 62 | 66 | 66 | 70 | 71 | 79 | 79 | 92 | 92 |
| 140 | 112 | 112.2 | 0.750 | 165 | 58 | 58 | 62 | 66 | 70 | 70 | 71 | 79 | 79 | 91 | 92 |
| 140 | 112 | 112.4 | 1.000 | 182 | 58 | 59 | 62 | 66 | 70 | 71 | 71 | 79 | 87 | 92 | 93 |
| 140 | 112 | 112.9 | 1.500 | 218 | 58 | 59 | 62 | 66 | 70 | 71 | 76 | 79 | 88 | 92 | 93 |
| 140 | 112 | 115.4 | 3.000 | 325 | 60 | 63 | 67 | 71 | 72 | 73 | 78 | 89 | 90 | 94 | 96 |
| 140 | 118 | 118.0 | 0.250 | 136 | 59 | 59 | 60 | 64 | 67 | 71 | 72 | 72 | 80 | 89 | 93 |
| 140 | 118 | 118.1 | 0.500 | 153 | 59 | 59 | 60 | 64 | 67 | 71 | 72 | 76 | 80 | 89 | 93 |
| 140 | 118 | 118.2 | 0.750 | 171 | 59 | 59 | 60 | 64 | 68 | 71 | 72 | 77 | 80 | 89 | 94 |
| 140 | 118 | 118.4 | 1.000 | 188 | 59 | 60 | 63 | 64 | 67 | 71 | 72 | 77 | 80 | 89 | 94 |
| 140 | 118 | 118.9 | 1.500 | 224 | 59 | 59 | 64 | 67 | 71 | 71 | 72 | 77 | 89 | 90 | 94 |
| 140 | 118 | 121.6 | 3.000 | 332 | 73 | 73 | 74 | 74 | 74 | 79 | 80 | 89 | 93 | 95 | 99 |
| 140 | 124 | 124.0 | 0.250 | 142 | 59 | 60 | 64 | 64 | 68 | 72 | 72 | 77 | 78 | 89 | 90 |
| 140 | 124 | 124.1 | 0.500 | 159 | 59 | 60 | 64 | 67 | 68 | 72 | 72 | 77 | 78 | 89 | 90 |
| 140 | 124 | 124.2 | 0.750 | 177 | 59 | 60 | 64 | 67 | 71 | 72 | 72 | 78 | 86 | 89 | 90 |
| 140 | 124 | 124.4 | 1.000 | 194 | 59 | 60 | 64 | 67 | 71 | 72 | 73 | 78 | 86 | 89 | 90 |
| 140 | 124 | 125.0 | 1.500 | 230 | 60 | 60 | 64 | 67 | 71 | 72 | 78 | 78 | 86 | 89 | 90 |
| 140 | 124 | 127.8 | 3.000 | 338 | 74 | 75 | 75 | 75 | 75 | 81 | 81 | 90 | 91 | 96 | 96 |

X - Bridging Requirements - Reference SP-Series Specification Section 904.5 BRIDGING on page 92

| | | | | | | | | | |
|-------|--------|--------|--------|--------|--------|--------|--------|--------|---------|
| 1 row | 2 rows | 3 rows | 4 rows | 5 rows | 6 rows | 7 rows | 8 rows | 9 rows | 10 rows |
|-------|--------|--------|--------|--------|--------|--------|--------|--------|---------|

Bearing Seat Depth - Profiles to the right of a colored line have a seat depth indicated in the chart below

| | | | |
|------------|-----|-----|--------------|
| Minimum 5" | 7½" | 10" | Maximum 12½" |
|------------|-----|-----|--------------|

Horizontal Deflection - Joist designs marked with the note 'δ_{x>2}' have a horizontal slip greater than 2". (Reference page 10)

SCISSOR JOIST (SPSC) TABLES

| Span ft | Chord Depth in | Ridge Depth in | Top Chord Pitch in/ft | Shape Depth in | Top Chord Uniform Load - Pounds per Linear Foot (plf) (ASD) | | | | | | | | | | |
|------------|----------------------|----------------------|--------------------------------|----------------------|---|-----------------------|-----------------------|-----------------------|-----------------------|-----------------------|-----------------------|------------------------|------------------------|------------------------|------------------------|
| | | | | | 300 | 350 | 400 | 450 | 500 | 550 | 600 | 650 | 700 | 750 | 800 |
| | | | | | Joist Self-Weight - Pounds per Linear Foot (plf) | | | | | | | | | | |
| 150 | 76 | 76.0 | 0.250 | 95 | 48 | 57 | 65 | 71 | 80 | 84 | 93 | 101 | 113 | 113 | 124 |
| 150 | 76 | 76.1 | 0.500 | 114 | 48 | 57 | 64 | 71 | 80 | 85 | 93 | 101 | 113 | 113 | 124 |
| 150 | 76 | 76.1 | 0.750 | 132 | 48 | 57 | 65 | 71 | 80 | 88 | 93 | 101 | 113 | 113 | 124 |
| 150 | 76 | 76.3 | 1.000 | 151 | 49 | 57 | 68 | 72 | 80 | 88 | 93 | 102 | 113 | 114 | 125 |
| 150 | 76 | 76.6 | 1.500 | 189 | 49 | 61 | 68 | 72 | 77 | 89 | 94 | 102 | 114 | 124 | 125 |
| 150 | 76 | 78.3 | 3.000 | 303 | 54 _{δx>2} | 62 _{δx>2} | 69 _{δx>2} | 74 _{δx>2} | 82 _{δx>2} | 91 _{δx>2} | 96 _{δx>2} | 115 _{δx>2} | 116 _{δx>2} | 127 _{δx>2} | 127 _{δx>2} |
| 150 | 82 | 82.0 | 0.250 | 101 | 48 | 58 | 62 | 69 | 73 | 81 | 94 | 95 | 103 | 114 | 115 |
| 150 | 82 | 82.1 | 0.500 | 120 | 48 | 58 | 62 | 69 | 73 | 82 | 94 | 95 | 103 | 114 | 115 |
| 150 | 82 | 82.2 | 0.750 | 138 | 48 | 58 | 62 | 69 | 73 | 82 | 94 | 95 | 103 | 115 | 115 |
| 150 | 82 | 82.3 | 1.000 | 157 | 48 | 58 | 62 | 70 | 78 | 82 | 94 | 95 | 103 | 115 | 115 |
| 150 | 82 | 82.6 | 1.500 | 195 | 48 | 58 | 62 | 70 | 78 | 82 | 95 | 96 | 115 | 115 | 116 |
| 150 | 82 | 84.5 | 3.000 | 310 | 53 _{δx>2} | 63 _{δx>2} | 67 _{δx>2} | 71 _{δx>2} | 80 _{δx>2} | 92 _{δx>2} | 97 _{δx>2} | 97 _{δx>2} | 117 _{δx>2} | 118 _{δx>2} | 118 _{δx>2} |
| 150 | 88 | 88.0 | 0.250 | 107 | 47 | 54 | 62 | 69 | 70 | 78 | 90 | 95 | 95 | 114 | 115 |
| 150 | 88 | 88.1 | 0.500 | 126 | 47 | 54 | 62 | 69 | 70 | 78 | 90 | 95 | 95 | 115 | 115 |
| 150 | 88 | 88.2 | 0.750 | 144 | 47 | 54 | 62 | 69 | 70 | 78 | 90 | 95 | 95 | 115 | 115 |
| 150 | 88 | 88.3 | 1.000 | 163 | 47 | 54 | 62 | 69 | 70 | 78 | 90 | 95 | 96 | 115 | 116 |
| 150 | 88 | 88.7 | 1.500 | 201 | 47 | 54 | 62 | 70 | 70 | 79 | 91 | 95 | 96 | 115 | 116 |
| 150 | 88 | 90.7 | 3.000 | 316 | 52 _{δx>2} | 59 _{δx>2} | 67 _{δx>2} | 71 _{δx>2} | 76 _{δx>2} | 88 _{δx>2} | 92 _{δx>2} | 93 _{δx>2} | 109 _{δx>2} | 117 _{δx>2} | 118 _{δx>2} |
| 150 | 94 | 94.0 | 0.250 | 113 | 48 | 49 | 59 | 63 | 71 | 71 | 79 | 92 | 96 | 97 | 116 |
| 150 | 94 | 94.1 | 0.500 | 132 | 48 | 53 | 59 | 63 | 71 | 71 | 79 | 92 | 96 | 97 | 116 |
| 150 | 94 | 94.2 | 0.750 | 150 | 48 | 53 | 63 | 67 | 71 | 71 | 80 | 92 | 96 | 97 | 116 |
| 150 | 94 | 94.3 | 1.000 | 169 | 48 | 53 | 63 | 67 | 71 | 76 | 80 | 92 | 97 | 97 | 116 |
| 150 | 94 | 94.7 | 1.500 | 207 | 48 | 53 | 63 | 67 | 71 | 76 | 80 | 92 | 97 | 98 | 117 |
| 150 | 94 | 96.9 | 3.000 | 322 | 53 _{δx>2} | 60 _{δx>2} | 68 _{δx>2} | 69 _{δx>2} | 77 _{δx>2} | 82 _{δx>2} | 91 _{δx>2} | 95 _{δx>2} | 100 _{δx>2} | 111 _{δx>2} | 120 _{δx>2} |
| 150 | 100 | 100.0 | 0.250 | 119 | 49 | 51 | 56 | 65 | 69 | 72 | 80 | 81 | 93 | 98 | 99 |
| 150 | 100 | 100.1 | 0.500 | 138 | 49 | 51 | 56 | 65 | 69 | 72 | 81 | 89 | 93 | 98 | 99 |
| 150 | 100 | 100.2 | 0.750 | 156 | 49 | 54 | 56 | 65 | 69 | 72 | 81 | 90 | 93 | 98 | 99 |
| 150 | 100 | 100.3 | 1.000 | 175 | 49 | 54 | 60 | 68 | 69 | 72 | 81 | 90 | 94 | 98 | 110 |
| 150 | 100 | 100.8 | 1.500 | 213 | 49 | 54 | 60 | 69 | 69 | 73 | 81 | 90 | 94 | 99 | 111 |
| 150 | 100 | 103.1 | 3.000 | 328 | 51 _{δx>2} | 60 _{δx>2} | 66 _{δx>2} | 70 _{δx>2} | 71 _{δx>2} | 79 _{δx>2} | 92 _{δx>2} | 92 _{δx>2} | 96 _{δx>2} | 101 _{δx>2} | 113 _{δx>2} |
| 150 | 106 | 106.0 | 0.250 | 125 | 50 | 50 | 57 | 64 | 68 | 72 | 77 | 89 | 90 | 93 | 98 |
| 150 | 106 | 106.1 | 0.500 | 144 | 50 | 54 | 60 | 68 | 68 | 72 | 77 | 89 | 90 | 94 | 98 |
| 150 | 106 | 106.2 | 0.750 | 162 | 50 | 53 | 60 | 68 | 68 | 72 | 77 | 89 | 90 | 94 | 98 |
| 150 | 106 | 106.4 | 1.000 | 181 | 50 | 54 | 60 | 68 | 69 | 72 | 78 | 89 | 90 | 94 | 109 |
| 150 | 106 | 106.8 | 1.500 | 219 | 50 | 54 | 60 | 68 | 69 | 78 | 78 | 90 | 90 | 94 | 110 |
| 150 | 106 | 109.3 | 3.000 | 334 | 54 | 58 _{δx>2} | 65 _{δx>2} | 70 _{δx>2} | 71 _{δx>2} | 79 _{δx>2} | 88 _{δx>2} | 92 _{δx>2} | 93 _{δx>2} | 107 _{δx>2} | 112 _{δx>2} |
| 150 | 112 | 112.0 | 0.250 | 131 | 58 | 59 | 63 | 66 | 70 | 71 | 79 | 80 | 92 | 96 | 96 |
| 150 | 112 | 112.1 | 0.500 | 150 | 58 | 62 | 66 | 70 | 70 | 71 | 79 | 88 | 92 | 96 | 96 |
| 150 | 112 | 112.2 | 0.750 | 168 | 58 | 62 | 66 | 70 | 70 | 71 | 79 | 88 | 91 | 96 | 96 |
| 150 | 112 | 112.4 | 1.000 | 187 | 59 | 63 | 66 | 70 | 71 | 71 | 79 | 88 | 92 | 94 | 97 |
| 150 | 112 | 112.9 | 1.500 | 225 | 59 | 63 | 67 | 71 | 71 | 76 | 80 | 89 | 92 | 94 | 108 |
| 150 | 112 | 115.4 | 3.000 | 340 | 63 | 67 | 71 | 72 | 72 _{δx>2} | 77 _{δx>2} | 89 _{δx>2} | 90 _{δx>2} | 94 _{δx>2} | 107 _{δx>2} | 110 _{δx>2} |
| 150 | 118 | 118.0 | 0.250 | 137 | 59 | 59 | 63 | 67 | 71 | 71 | 75 | 81 | 93 | 94 | 97 |
| 150 | 118 | 118.1 | 0.500 | 156 | 59 | 60 | 63 | 67 | 71 | 71 | 80 | 81 | 93 | 94 | 97 |
| 150 | 118 | 118.2 | 0.750 | 174 | 59 | 60 | 63 | 67 | 71 | 72 | 80 | 81 | 93 | 94 | 97 |
| 150 | 118 | 118.4 | 1.000 | 193 | 59 | 63 | 67 | 71 | 71 | 72 | 81 | 81 | 93 | 94 | 98 |
| 150 | 118 | 118.9 | 1.500 | 231 | 59 | 63 | 67 | 71 | 71 | 72 | 81 | 89 | 93 | 94 | 98 |
| 150 | 118 | 121.6 | 3.000 | 347 | 72 | 73 | 73 | 74 | 79 | 80 | 91 | 92 _{δx>2} | 96 _{δx>2} | 109 _{δx>2} | 113 _{δx>2} |
| 150 | 124 | 124.0 | 0.250 | 143 | 61 | 61 | 65 | 69 | 72 | 73 | 78 | 81 | 90 | 95 | 96 |
| 150 | 124 | 124.1 | 0.500 | 162 | 61 | 61 | 65 | 69 | 72 | 73 | 78 | 81 | 90 | 95 | 96 |
| 150 | 124 | 124.2 | 0.750 | 180 | 61 | 65 | 68 | 72 | 72 | 73 | 78 | 81 | 90 | 95 | 96 |
| 150 | 124 | 124.4 | 1.000 | 199 | 61 | 65 | 68 | 72 | 73 | 73 | 78 | 90 | 90 | 96 | 96 |
| 150 | 124 | 125.0 | 1.500 | 237 | 61 | 65 | 68 | 72 | 73 | 73 | 78 | 90 | 91 | 96 | 97 |
| 150 | 124 | 127.8 | 3.000 | 353 | 73 | 74 | 74 | 75 | 75 | 80 | 89 | 93 | 94 | 99 | 110 _{δx>2} |
| 150 | 130 | 130.0 | 0.250 | 149 | 61 | 62 | 66 | 69 | 73 | 73 | 74 | 79 | 92 | 93 | 97 |
| 150 | 130 | 130.1 | 0.500 | 168 | 61 | 62 | 66 | 69 | 73 | 73 | 74 | 79 | 92 | 93 | 97 |
| 150 | 130 | 130.3 | 0.750 | 187 | 61 | 62 | 66 | 69 | 73 | 73 | 79 | 79 | 92 | 93 | 97 |
| 150 | 130 | 130.5 | 1.000 | 205 | 61 | 65 | 69 | 73 | 73 | 73 | 79 | 80 | 92 | 93 | 97 |
| 150 | 130 | 131.0 | 1.500 | 244 | 62 | 65 | 69 | 73 | 73 | 74 | 79 | 89 | 93 | 94 | 98 |
| 150 | 130 | 134.0 | 3.000 | 359 | 74 | 74 | 75 | 76 | 76 | 81 | 90 | 91 | 95 | 96 | 111 |

X - Bridging Requirements - Reference SP-Series Specification Section 904.5 BRIDGING on page 92

| | | | | | | | | | |
|-------|--------|--------|--------|--------|--------|--------|--------|--------|---------|
| 1 row | 2 rows | 3 rows | 4 rows | 5 rows | 6 rows | 7 rows | 8 rows | 9 rows | 10 rows |
|-------|--------|--------|--------|--------|--------|--------|--------|--------|---------|

Bearing Seat Depth - Profiles to the right of a colored line have a seat depth indicated in the chart below

| | | | |
|------------|-----|-----|--------------|
| Minimum 5" | 7½" | 10" | Maximum 12½" |
|------------|-----|-----|--------------|

Horizontal Deflection - Joist designs marked with the note 'δ_{x>2}' have a horizontal slip greater than 2". (Reference page 10)