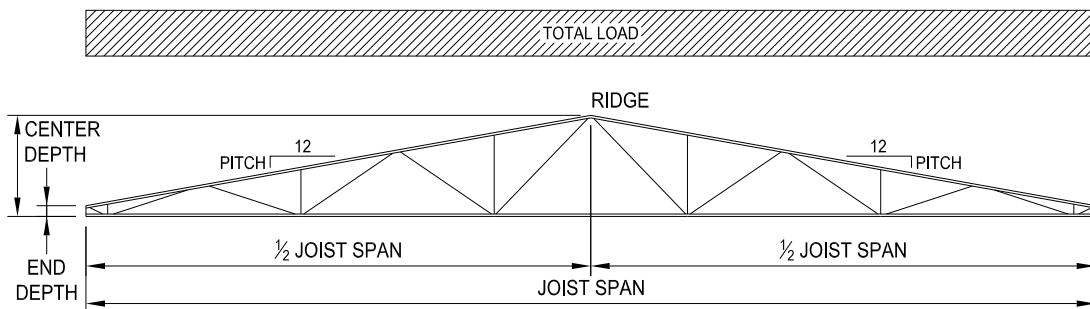


Gable Joist (SPGB) Tables

The following weight tables are representative of SP-Series joist designs for Gable Joists with parameters shown in the diagram below. The maximum allowable Live Load deflection is $L/240$ for a Live Load equal to 75 percent of the Total Load listed in the table. The tables also give bridging requirements per Section 904.5(d), the required seat depth for the given profile, as well as the estimated self-weight in pounds per

linear foot. This catalog provides two design examples for reference and clarification on design issues. The following tables are not representative of any limits or constraints on design or constructability by NMBS. For further information, please contact your nearest NMBS representative or visit www.newmill.com.

ALL TABLES ARE BASED ON ASD



GABLE JOIST (SPGB)



Gable Joist (SPGB) Tables

| Span ft | End Depth in | Center Depth in | Top Chord Pitch in/ft | Top Chord Uniform Load - Pounds per Linear Foot (plf) (ASD) | | | | | | | | | | |
|------------|--------------------|-----------------------|--------------------------------|---|-----|-----|-----|-----|-----|-----|-----|-----|-----|-----|
| | | | | 300 | 350 | 400 | 450 | 500 | 550 | 600 | 650 | 700 | 750 | 800 |
| | | | | Joist Self-Weight - Pounds per Linear Foot (plf) | | | | | | | | | | |
| 10 | 18.1 | 20 | 0.375 | 8 | 8 | 8 | 8 | 8 | 8 | 8 | 8 | 8 | 8 | 8 |
| 10 | 17.5 | 20 | 0.500 | 8 | 8 | 8 | 8 | 8 | 8 | 8 | 8 | 8 | 8 | 8 |
| 10 | 16.9 | 20 | 0.625 | 8 | 8 | 8 | 8 | 8 | 8 | 8 | 8 | 8 | 8 | 8 |
| 10 | 16.3 | 20 | 0.750 | 8 | 8 | 8 | 8 | 8 | 8 | 8 | 8 | 8 | 8 | 8 |
| 10 | 15.6 | 20 | 0.875 | 8 | 8 | 8 | 8 | 8 | 8 | 8 | 8 | 8 | 8 | 8 |
| 10 | 15.0 | 20 | 1.000 | 7 | 7 | 7 | 7 | 7 | 7 | 7 | 7 | 7 | 7 | 7 |
| 10 | 19.6 | 24 | 0.875 | 8 | 8 | 8 | 8 | 8 | 8 | 8 | 8 | 8 | 8 | 8 |
| 10 | 19.0 | 24 | 1.000 | 8 | 8 | 8 | 8 | 8 | 8 | 8 | 8 | 8 | 8 | 8 |
| 10 | 17.8 | 24 | 1.250 | 8 | 8 | 8 | 8 | 8 | 8 | 8 | 8 | 8 | 8 | 8 |
| 10 | 16.5 | 24 | 1.500 | 8 | 8 | 8 | 8 | 8 | 8 | 8 | 8 | 8 | 8 | 8 |
| 10 | 14.0 | 24 | 2.000 | 8 | 8 | 8 | 8 | 8 | 8 | 8 | 8 | 8 | 8 | 8 |
| 10 | 9.0 | 24 | 3.000 | 8 | 8 | 8 | 8 | 8 | 8 | 8 | 8 | 8 | 8 | 8 |
| 10 | 23.0 | 28 | 1.000 | 8 | 8 | 8 | 8 | 8 | 8 | 8 | 8 | 8 | 8 | 8 |
| 10 | 21.8 | 28 | 1.250 | 8 | 8 | 8 | 8 | 8 | 8 | 8 | 8 | 8 | 8 | 8 |
| 10 | 20.5 | 28 | 1.500 | 8 | 8 | 8 | 8 | 8 | 8 | 8 | 8 | 8 | 8 | 8 |
| 10 | 18.0 | 28 | 2.000 | 8 | 8 | 8 | 8 | 8 | 8 | 8 | 8 | 8 | 8 | 8 |
| 10 | 13.0 | 28 | 3.000 | 8 | 8 | 8 | 8 | 8 | 8 | 8 | 8 | 8 | 8 | 8 |
| 10 | 8.0 | 28 | 4.000 | 8 | 8 | 8 | 8 | 8 | 8 | 8 | 8 | 8 | 8 | 8 |
| 10 | 27.0 | 32 | 1.000 | 7 | 8 | 8 | 8 | 8 | 8 | 8 | 8 | 8 | 8 | 8 |
| 10 | 25.8 | 32 | 1.250 | 7 | 8 | 8 | 8 | 8 | 8 | 8 | 8 | 8 | 8 | 8 |
| 10 | 24.5 | 32 | 1.500 | 7 | 8 | 8 | 8 | 8 | 8 | 8 | 8 | 8 | 8 | 8 |
| 10 | 22.0 | 32 | 2.000 | 8 | 8 | 8 | 8 | 8 | 8 | 8 | 8 | 8 | 8 | 8 |
| 10 | 17.0 | 32 | 3.000 | 8 | 8 | 8 | 8 | 9 | 9 | 9 | 9 | 9 | 9 | 9 |
| 10 | 12.0 | 32 | 4.000 | 8 | 8 | 8 | 8 | 8 | 8 | 8 | 8 | 8 | 8 | 8 |
| 10 | 31.8 | 38 | 1.250 | 8 | 8 | 8 | 8 | 8 | 8 | 8 | 8 | 8 | 8 | 8 |
| 10 | 30.5 | 38 | 1.500 | 8 | 8 | 8 | 8 | 8 | 8 | 8 | 8 | 8 | 8 | 8 |
| 10 | 28.0 | 38 | 2.000 | 8 | 8 | 8 | 8 | 8 | 8 | 8 | 8 | 8 | 8 | 8 |
| 10 | 23.0 | 38 | 3.000 | 8 | 8 | 8 | 8 | 8 | 8 | 8 | 8 | 8 | 8 | 8 |
| 10 | 18.0 | 38 | 4.000 | 9 | 9 | 9 | 9 | 9 | 9 | 9 | 9 | 9 | 9 | 9 |
| 10 | 8.0 | 38 | 6.000 | 9 | 9 | 9 | 9 | 9 | 9 | 9 | 9 | 9 | 9 | 9 |
| 10 | 37.8 | 44 | 1.250 | 8 | 8 | 8 | 8 | 8 | 8 | 8 | 9 | 9 | 9 | 9 |
| 10 | 36.5 | 44 | 1.500 | 8 | 8 | 8 | 8 | 8 | 8 | 8 | 9 | 9 | 9 | 9 |
| 10 | 34.0 | 44 | 2.000 | 8 | 8 | 8 | 8 | 8 | 8 | 8 | 9 | 9 | 9 | 9 |
| 10 | 29.0 | 44 | 3.000 | 8 | 8 | 8 | 8 | 8 | 8 | 8 | 8 | 8 | 8 | 8 |
| 10 | 24.0 | 44 | 4.000 | 8 | 8 | 8 | 8 | 8 | 8 | 8 | 8 | 8 | 8 | 8 |
| 10 | 14.0 | 44 | 6.000 | 9 | 9 | 9 | 9 | 9 | 9 | 9 | 9 | 9 | 9 | 9 |
| 10 | 43.8 | 50 | 1.250 | 8 | 8 | 8 | 8 | 8 | 8 | 9 | 9 | 9 | 9 | 9 |
| 10 | 42.5 | 50 | 1.500 | 8 | 8 | 8 | 8 | 8 | 8 | 9 | 9 | 9 | 9 | 9 |
| 10 | 40.0 | 50 | 2.000 | 8 | 8 | 8 | 8 | 8 | 8 | 9 | 9 | 9 | 9 | 9 |
| 10 | 35.0 | 50 | 3.000 | 8 | 8 | 8 | 8 | 8 | 8 | 9 | 9 | 9 | 9 | 9 |
| 10 | 30.0 | 50 | 4.000 | 8 | 8 | 8 | 8 | 8 | 8 | 9 | 9 | 9 | 9 | 9 |
| 10 | 20.0 | 50 | 6.000 | 9 | 9 | 9 | 9 | 9 | 9 | 9 | 9 | 9 | 9 | 9 |
| 10 | 51.8 | 58 | 1.250 | 9 | 9 | 9 | 9 | 9 | 9 | 9 | 9 | 10 | 10 | 10 |
| 10 | 50.5 | 58 | 1.500 | 9 | 9 | 9 | 9 | 9 | 9 | 9 | 9 | 10 | 10 | 10 |
| 10 | 48.0 | 58 | 2.000 | 9 | 9 | 9 | 9 | 9 | 9 | 9 | 9 | 10 | 10 | 10 |
| 10 | 43.0 | 58 | 3.000 | 9 | 9 | 9 | 9 | 9 | 9 | 9 | 9 | 9 | 10 | 10 |
| 10 | 38.0 | 58 | 4.000 | 9 | 9 | 9 | 9 | 9 | 9 | 9 | 9 | 9 | 10 | 10 |
| 10 | 28.0 | 58 | 6.000 | 9 | 9 | 9 | 9 | 9 | 9 | 9 | 10 | 10 | 10 | 10 |
| 10 | 59.8 | 66 | 1.250 | 10 | 10 | 10 | 10 | 10 | 10 | 11 | 11 | 11 | 11 | 11 |
| 10 | 58.5 | 66 | 1.500 | 10 | 10 | 10 | 10 | 10 | 10 | 10 | 10 | 11 | 11 | 11 |
| 10 | 56.0 | 66 | 2.000 | 10 | 10 | 10 | 10 | 10 | 10 | 10 | 10 | 11 | 11 | 11 |
| 10 | 51.0 | 66 | 3.000 | 10 | 10 | 10 | 10 | 10 | 10 | 10 | 10 | 11 | 11 | 11 |
| 10 | 46.0 | 66 | 4.000 | 10 | 10 | 10 | 10 | 10 | 10 | 10 | 11 | 11 | 11 | 11 |
| 10 | 36.0 | 66 | 6.000 | 10 | 10 | 10 | 10 | 10 | 10 | 10 | 10 | 11 | 11 | 11 |
| 10 | 69.8 | 76 | 1.250 | 12 | 12 | 12 | 12 | 12 | 12 | 13 | 13 | 13 | 13 | 13 |
| 10 | 68.5 | 76 | 1.500 | 12 | 12 | 12 | 12 | 12 | 12 | 12 | 12 | 13 | 13 | 13 |
| 10 | 66.0 | 76 | 2.000 | 12 | 12 | 12 | 12 | 12 | 12 | 12 | 12 | 13 | 13 | 13 |
| 10 | 61.0 | 76 | 3.000 | 11 | 11 | 11 | 11 | 11 | 11 | 12 | 12 | 12 | 12 | 13 |
| 10 | 56.0 | 76 | 4.000 | 11 | 11 | 11 | 11 | 11 | 11 | 11 | 12 | 12 | 12 | 12 |
| 10 | 46.0 | 76 | 6.000 | 11 | 11 | 11 | 11 | 11 | 11 | 11 | 11 | 12 | 12 | 12 |

X-Bridging Requirements – Reference Standard Specification **Section 904.5 Bridging** on page 96

| | | | | | | | | | |
|-------|--------|--------|--------|--------|--------|--------|--------|--------|---------|
| 1 row | 2 rows | 3 rows | 4 rows | 5 rows | 6 rows | 7 rows | 8 rows | 9 rows | 10 rows |
|-------|--------|--------|--------|--------|--------|--------|--------|--------|---------|

Bearing Seat Depth – Profiles to the right of a colored line have a seat depth indicated in the chart below

| | | | |
|------------|-----|-----|--------------|
| Minimum 5" | 7½" | 10" | Maximum 12½" |
|------------|-----|-----|--------------|

Gable Joist (SPGB) Tables

| Span ft | End Depth in | Center Depth in | Top Chord Pitch in/ft | Top Chord Uniform Load - Pounds per Linear Foot (plf) (ASD) | | | | | | | | | | | |
|------------|--------------------|-----------------------|--------------------------------|---|-----|-----|-----|-----|-----|-----|-----|-----|-----|-----|--|
| | | | | 300 | 350 | 400 | 450 | 500 | 550 | 600 | 650 | 700 | 750 | 800 | |
| | | | | Joist Self-Weight - Pounds per Linear Foot (plf) | | | | | | | | | | | |
| 20 | 17.5 | 20 | 0.250 | 7 | 7 | 7 | 7 | 7 | 8 | 8 | 8 | 9 | 10 | 10 | |
| 20 | 16.3 | 20 | 0.375 | 7 | 7 | 7 | 7 | 7 | 8 | 8 | 9 | 9 | 10 | 10 | |
| 20 | 15.0 | 20 | 0.500 | 7 | 7 | 7 | 7 | 7 | 8 | 8 | 9 | 9 | 10 | 10 | |
| 20 | 13.8 | 20 | 0.625 | 7 | 7 | 7 | 7 | 7 | 8 | 8 | 9 | 9 | 10 | 10 | |
| 20 | 12.5 | 20 | 0.750 | 7 | 7 | 7 | 7 | 7 | 8 | 8 | 9 | 9 | 10 | 10 | |
| 20 | 11.3 | 20 | 0.875 | 7 | 7 | 7 | 7 | 7 | 8 | 8 | 9 | 9 | 10 | 10 | |
| 20 | 17.8 | 24 | 0.625 | 7 | 7 | 7 | 7 | 7 | 8 | 8 | 8 | 9 | 10 | 10 | |
| 20 | 16.5 | 24 | 0.750 | 7 | 7 | 7 | 7 | 7 | 8 | 8 | 9 | 9 | 10 | 10 | |
| 20 | 15.3 | 24 | 0.875 | 7 | 7 | 7 | 7 | 7 | 8 | 8 | 9 | 9 | 9 | 10 | |
| 20 | 14.0 | 24 | 1.000 | 7 | 7 | 7 | 7 | 7 | 7 | 8 | 8 | 9 | 9 | 10 | |
| 20 | 11.5 | 24 | 1.250 | 7 | 7 | 7 | 7 | 7 | 8 | 8 | 9 | 9 | 10 | 10 | |
| 20 | 9.0 | 24 | 1.500 | 7 | 7 | 7 | 7 | 7 | 8 | 8 | 9 | 9 | 10 | 10 | |
| 20 | 22.5 | 30 | 0.750 | 7 | 7 | 7 | 8 | 8 | 8 | 8 | 9 | 9 | 9 | 10 | |
| 20 | 21.3 | 30 | 0.875 | 7 | 7 | 7 | 8 | 8 | 8 | 8 | 9 | 9 | 10 | 10 | |
| 20 | 20.0 | 30 | 1.000 | 7 | 7 | 7 | 7 | 8 | 8 | 8 | 8 | 9 | 10 | 10 | |
| 20 | 17.5 | 30 | 1.250 | 7 | 7 | 7 | 7 | 7 | 8 | 8 | 8 | 9 | 10 | 10 | |
| 20 | 15.0 | 30 | 1.500 | 7 | 7 | 7 | 7 | 7 | 8 | 8 | 8 | 9 | 9 | 10 | |
| 20 | 10.0 | 30 | 2.000 | 7 | 7 | 7 | 7 | 7 | 7 | 8 | 8 | 9 | 9 | 9 | |
| 20 | 27.3 | 36 | 0.875 | 7 | 7 | 7 | 7 | 8 | 8 | 8 | 9 | 9 | 10 | 10 | |
| 20 | 26.0 | 36 | 1.000 | 7 | 7 | 7 | 7 | 8 | 8 | 8 | 9 | 9 | 10 | 10 | |
| 20 | 23.5 | 36 | 1.250 | 7 | 7 | 7 | 8 | 8 | 8 | 8 | 9 | 9 | 10 | 10 | |
| 20 | 21.0 | 36 | 1.500 | 7 | 7 | 7 | 8 | 8 | 8 | 8 | 9 | 9 | 10 | 10 | |
| 20 | 16.0 | 36 | 2.000 | 7 | 7 | 8 | 8 | 8 | 8 | 8 | 9 | 9 | 10 | 10 | |
| 20 | 6.0 | 36 | 3.000 | 7 | 7 | 8 | 8 | 8 | 8 | 8 | 9 | 9 | 10 | 10 | |
| 20 | 33.3 | 42 | 0.875 | 7 | 8 | 8 | 8 | 8 | 8 | 8 | 9 | 9 | 10 | 10 | |
| 20 | 32.0 | 42 | 1.000 | 7 | 8 | 8 | 8 | 8 | 8 | 8 | 9 | 9 | 10 | 10 | |
| 20 | 29.5 | 42 | 1.250 | 7 | 8 | 8 | 8 | 8 | 8 | 8 | 9 | 9 | 10 | 10 | |
| 20 | 27.0 | 42 | 1.500 | 8 | 8 | 8 | 8 | 8 | 8 | 8 | 9 | 9 | 10 | 10 | |
| 20 | 22.0 | 42 | 2.000 | 8 | 8 | 8 | 8 | 8 | 8 | 8 | 9 | 9 | 10 | 10 | |
| 20 | 12.0 | 42 | 3.000 | 7 | 7 | 7 | 7 | 8 | 8 | 8 | 8 | 9 | 9 | 10 | |
| 20 | 40.0 | 50 | 1.000 | 8 | 8 | 8 | 8 | 9 | 9 | 9 | 10 | 10 | 10 | 11 | |
| 20 | 37.5 | 50 | 1.250 | 8 | 8 | 8 | 8 | 9 | 9 | 9 | 10 | 10 | 10 | 11 | |
| 20 | 35.0 | 50 | 1.500 | 8 | 8 | 8 | 8 | 8 | 9 | 9 | 9 | 10 | 10 | 11 | |
| 20 | 30.0 | 50 | 2.000 | 8 | 8 | 8 | 8 | 8 | 8 | 9 | 9 | 9 | 10 | 11 | |
| 20 | 20.0 | 50 | 3.000 | 8 | 8 | 8 | 8 | 9 | 9 | 9 | 9 | 10 | 10 | 10 | |
| 20 | 10.0 | 50 | 4.000 | 7 | 8 | 8 | 8 | 8 | 8 | 8 | 8 | 9 | 10 | 10 | |
| 20 | 48.0 | 58 | 1.000 | 9 | 9 | 9 | 10 | 10 | 10 | 10 | 11 | 11 | 12 | 13 | |
| 20 | 45.5 | 58 | 1.250 | 9 | 9 | 9 | 10 | 10 | 10 | 10 | 11 | 11 | 12 | 12 | |
| 20 | 43.0 | 58 | 1.500 | 9 | 9 | 9 | 9 | 10 | 10 | 10 | 10 | 11 | 11 | 12 | |
| 20 | 38.0 | 58 | 2.000 | 8 | 8 | 8 | 9 | 9 | 10 | 10 | 10 | 11 | 11 | 12 | |
| 20 | 28.0 | 58 | 3.000 | 8 | 9 | 9 | 9 | 9 | 9 | 9 | 9 | 9 | 10 | 11 | |
| 20 | 18.0 | 58 | 4.000 | 8 | 8 | 8 | 9 | 9 | 9 | 9 | 9 | 10 | 10 | 11 | |
| 20 | 55.5 | 68 | 1.250 | 9 | 10 | 10 | 11 | 11 | 11 | 12 | 14 | 14 | 15 | 15 | |
| 20 | 53.0 | 68 | 1.500 | 9 | 10 | 10 | 11 | 11 | 11 | 12 | 12 | 13 | 14 | 15 | |
| 20 | 48.0 | 68 | 2.000 | 9 | 9 | 10 | 10 | 10 | 11 | 11 | 12 | 12 | 13 | 14 | |
| 20 | 38.0 | 68 | 3.000 | 9 | 9 | 9 | 9 | 10 | 10 | 10 | 11 | 11 | 11 | 12 | |
| 20 | 28.0 | 68 | 4.000 | 9 | 9 | 9 | 9 | 9 | 9 | 9 | 9 | 10 | 11 | 11 | |
| 20 | 8.0 | 68 | 6.000 | 8 | 9 | 9 | 9 | 9 | 9 | 9 | 10 | 10 | 11 | 11 | |
| 20 | 65.5 | 78 | 1.250 | 11 | 12 | 12 | 13 | 13 | 14 | 15 | 15 | 17 | 17 | 17 | |
| 20 | 63.0 | 78 | 1.500 | 11 | 12 | 12 | 13 | 13 | 14 | 15 | 15 | 16 | 17 | 17 | |
| 20 | 58.0 | 78 | 2.000 | 11 | 11 | 12 | 12 | 12 | 13 | 14 | 15 | 16 | 16 | 17 | |
| 20 | 48.0 | 78 | 3.000 | 10 | 10 | 11 | 11 | 11 | 12 | 12 | 13 | 14 | 15 | 15 | |
| 20 | 38.0 | 78 | 4.000 | 10 | 10 | 10 | 10 | 11 | 11 | 11 | 11 | 11 | 12 | 13 | |
| 20 | 18.0 | 78 | 6.000 | 10 | 10 | 10 | 11 | 11 | 11 | 11 | 11 | 11 | 12 | 12 | |
| 20 | 77.5 | 90 | 1.250 | 16 | 16 | 17 | 19 | 19 | 20 | 20 | 20 | 20 | 21 | 21 | |
| 20 | 75.0 | 90 | 1.500 | 15 | 16 | 17 | 19 | 19 | 19 | 19 | 20 | 20 | 20 | 20 | |
| 20 | 70.0 | 90 | 2.000 | 14 | 14 | 16 | 17 | 18 | 18 | 18 | 19 | 19 | 20 | 20 | |
| 20 | 60.0 | 90 | 3.000 | 12 | 13 | 13 | 13 | 14 | 15 | 15 | 16 | 17 | 17 | 18 | |
| 20 | 50.0 | 90 | 4.000 | 11 | 11 | 12 | 12 | 12 | 13 | 13 | 14 | 15 | 15 | 16 | |
| 20 | 30.0 | 90 | 6.000 | 11 | 11 | 11 | 11 | 11 | 12 | 12 | 12 | 13 | 13 | 13 | |

X-Bridging Requirements – Reference Standard Specification Section 904.5 Bridging on page 96

| | | | | | | | | | |
|-------|--------|--------|--------|--------|--------|--------|--------|--------|---------|
| 1 row | 2 rows | 3 rows | 4 rows | 5 rows | 6 rows | 7 rows | 8 rows | 9 rows | 10 rows |
|-------|--------|--------|--------|--------|--------|--------|--------|--------|---------|

Bearing Seat Depth – Profiles to the right of a colored line have a seat depth indicated in the chart below

| | | | |
|------------|-----|-----|--------------|
| Minimum 5" | 7½" | 10" | Maximum 12½" |
|------------|-----|-----|--------------|



Gable Joist (SPGB) Tables

| Span ft | End Depth in | Center Depth in | Top Chord Pitch in/ft | Top Chord Uniform Load - Pounds per Linear Foot (plf) (ASD) | | | | | | | | | | |
|------------|--------------------|-----------------------|--------------------------------|---|-----|-----|-----|-----|-----|-----|-----|-----|-----|-----|
| | | | | 300 | 350 | 400 | 450 | 500 | 550 | 600 | 650 | 700 | 750 | 800 |
| | | | | Joist Self-Weight - Pounds per Linear Foot (plf) | | | | | | | | | | |
| 30 | 16.3 | 20 | 0.250 | 8 | 9 | 10 | 11 | 13 | 14 | 15 | 16 | 16 | 18 | 20 |
| 30 | 14.4 | 20 | 0.375 | 8 | 9 | 10 | 12 | 13 | 14 | 15 | 16 | 17 | 18 | 20 |
| 30 | 12.5 | 20 | 0.500 | 8 | 9 | 11 | 12 | 13 | 14 | 16 | 16 | 17 | 18 | 20 |
| 30 | 10.6 | 20 | 0.625 | 8 | 9 | 11 | 12 | 13 | 15 | 16 | 17 | 18 | 20 | 20 |
| 30 | 8.8 | 20 | 0.750 | 9 | 10 | 11 | 13 | 14 | 15 | 16 | 18 | 19 | 20 | 20 |
| 30 | 6.9 | 20 | 0.875 | 9 | 10 | 12 | 13 | 14 | 16 | 17 | 17 | 20 | 21 | 21 |
| 30 | 18.5 | 26 | 0.500 | 7 | 8 | 8 | 10 | 10 | 11 | 12 | 13 | 14 | 15 | 16 |
| 30 | 16.6 | 26 | 0.625 | 7 | 8 | 9 | 10 | 10 | 11 | 12 | 13 | 14 | 15 | 16 |
| 30 | 14.8 | 26 | 0.750 | 7 | 8 | 9 | 10 | 10 | 11 | 12 | 13 | 14 | 15 | 16 |
| 30 | 12.9 | 26 | 0.875 | 7 | 8 | 9 | 10 | 10 | 11 | 13 | 13 | 14 | 15 | 16 |
| 30 | 11.0 | 26 | 1.000 | 7 | 8 | 9 | 10 | 11 | 12 | 13 | 14 | 15 | 16 | 17 |
| 30 | 7.3 | 26 | 1.250 | 8 | 9 | 10 | 10 | 12 | 13 | 14 | 15 | 16 | 17 | 18 |
| 30 | 22.6 | 32 | 0.625 | 7 | 7 | 8 | 9 | 10 | 10 | 11 | 12 | 13 | 13 | 14 |
| 30 | 20.8 | 32 | 0.750 | 7 | 8 | 8 | 9 | 10 | 10 | 11 | 12 | 13 | 13 | 14 |
| 30 | 18.9 | 32 | 0.875 | 7 | 8 | 8 | 9 | 10 | 10 | 11 | 12 | 13 | 14 | 14 |
| 30 | 17.0 | 32 | 1.000 | 7 | 7 | 8 | 9 | 10 | 11 | 11 | 12 | 13 | 13 | 14 |
| 30 | 13.3 | 32 | 1.250 | 7 | 7 | 8 | 9 | 10 | 11 | 11 | 12 | 13 | 14 | 14 |
| 30 | 9.5 | 32 | 1.500 | 7 | 8 | 8 | 9 | 10 | 10 | 11 | 12 | 14 | 14 | 15 |
| 30 | 28.8 | 40 | 0.750 | 7 | 8 | 8 | 9 | 10 | 10 | 11 | 12 | 13 | 13 | 14 |
| 30 | 26.9 | 40 | 0.875 | 7 | 8 | 8 | 9 | 10 | 11 | 11 | 12 | 13 | 13 | 13 |
| 30 | 25.0 | 40 | 1.000 | 7 | 8 | 8 | 9 | 10 | 11 | 11 | 12 | 13 | 13 | 13 |
| 30 | 21.3 | 40 | 1.250 | 8 | 8 | 8 | 9 | 10 | 11 | 11 | 12 | 13 | 13 | 13 |
| 30 | 17.5 | 40 | 1.500 | 7 | 8 | 8 | 9 | 10 | 11 | 11 | 12 | 13 | 13 | 13 |
| 30 | 10.0 | 40 | 2.000 | 7 | 8 | 8 | 9 | 10 | 10 | 11 | 12 | 12 | 13 | 14 |
| 30 | 36.8 | 48 | 0.750 | 8 | 8 | 9 | 9 | 10 | 11 | 12 | 13 | 14 | 14 | 14 |
| 30 | 34.9 | 48 | 0.875 | 8 | 8 | 9 | 9 | 10 | 11 | 12 | 13 | 13 | 14 | 14 |
| 30 | 33.0 | 48 | 1.000 | 8 | 8 | 9 | 9 | 10 | 11 | 12 | 12 | 13 | 14 | 14 |
| 30 | 29.3 | 48 | 1.250 | 8 | 8 | 9 | 9 | 10 | 11 | 11 | 12 | 13 | 14 | 14 |
| 30 | 25.5 | 48 | 1.500 | 8 | 8 | 8 | 9 | 10 | 11 | 11 | 12 | 13 | 14 | 14 |
| 30 | 18.0 | 48 | 2.000 | 7 | 8 | 8 | 9 | 10 | 10 | 11 | 12 | 13 | 13 | 14 |
| 30 | 44.9 | 58 | 0.875 | 9 | 9 | 10 | 10 | 11 | 12 | 12 | 13 | 13 | 14 | 15 |
| 30 | 43.0 | 58 | 1.000 | 9 | 9 | 9 | 10 | 11 | 12 | 12 | 12 | 13 | 14 | 14 |
| 30 | 39.3 | 58 | 1.250 | 9 | 9 | 9 | 10 | 11 | 11 | 12 | 13 | 13 | 14 | 15 |
| 30 | 35.5 | 58 | 1.500 | 8 | 9 | 9 | 10 | 11 | 11 | 12 | 12 | 13 | 15 | 15 |
| 30 | 28.0 | 58 | 2.000 | 8 | 8 | 8 | 9 | 10 | 11 | 11 | 12 | 13 | 14 | 14 |
| 30 | 13.0 | 58 | 3.000 | 8 | 8 | 8 | 9 | 10 | 10 | 11 | 12 | 12 | 13 | 14 |
| 30 | 53.0 | 68 | 1.000 | 10 | 11 | 11 | 11 | 13 | 13 | 14 | 16 | 16 | 18 | 18 |
| 30 | 49.3 | 68 | 1.250 | 10 | 10 | 11 | 11 | 12 | 13 | 13 | 15 | 16 | 16 | 18 |
| 30 | 45.5 | 68 | 1.500 | 9 | 10 | 10 | 11 | 11 | 12 | 13 | 13 | 14 | 14 | 15 |
| 30 | 38.0 | 68 | 2.000 | 9 | 9 | 9 | 10 | 11 | 12 | 13 | 13 | 13 | 14 | 15 |
| 30 | 23.0 | 68 | 3.000 | 9 | 9 | 9 | 10 | 10 | 11 | 12 | 12 | 13 | 14 | 15 |
| 30 | 8.0 | 68 | 4.000 | 8 | 8 | 9 | 10 | 10 | 11 | 12 | 12 | 13 | 14 | 14 |
| 30 | 65.0 | 80 | 1.000 | 12 | 13 | 14 | 15 | 15 | 16 | 18 | 18 | 18 | 19 | 20 |
| 30 | 61.3 | 80 | 1.250 | 12 | 13 | 13 | 14 | 15 | 16 | 17 | 17 | 18 | 18 | 19 |
| 30 | 57.5 | 80 | 1.500 | 12 | 12 | 12 | 13 | 14 | 15 | 16 | 16 | 18 | 18 | 19 |
| 30 | 50.0 | 80 | 2.000 | 11 | 11 | 12 | 12 | 13 | 14 | 15 | 16 | 16 | 17 | 17 |
| 30 | 35.0 | 80 | 3.000 | 10 | 10 | 11 | 11 | 12 | 13 | 14 | 15 | 15 | 16 | 16 |
| 30 | 20.0 | 80 | 4.000 | 9 | 9 | 10 | 10 | 11 | 12 | 13 | 14 | 15 | 15 | 15 |
| 30 | 77.0 | 92 | 1.000 | 15 | 17 | 17 | 18 | 18 | 19 | 20 | 21 | 21 | 21 | 22 |
| 30 | 73.3 | 92 | 1.250 | 14 | 15 | 16 | 17 | 19 | 19 | 20 | 20 | 20 | 21 | 22 |
| 30 | 69.5 | 92 | 1.500 | 14 | 14 | 15 | 16 | 17 | 18 | 19 | 19 | 20 | 21 | 21 |
| 30 | 62.0 | 92 | 2.000 | 12 | 13 | 13 | 14 | 15 | 17 | 17 | 18 | 19 | 19 | 19 |
| 30 | 47.0 | 92 | 3.000 | 11 | 12 | 12 | 13 | 13 | 14 | 15 | 16 | 17 | 18 | 18 |
| 30 | 32.0 | 92 | 4.000 | 11 | 11 | 11 | 12 | 13 | 13 | 14 | 14 | 15 | 16 | 17 |
| 30 | 87.3 | 106 | 1.250 | 19 | 20 | 21 | 21 | 21 | 22 | 24 | 24 | 24 | 25 | 25 |
| 30 | 83.5 | 106 | 1.500 | 18 | 19 | 20 | 20 | 21 | 22 | 23 | 23 | 23 | 23 | 25 |
| 30 | 76.0 | 106 | 2.000 | 16 | 17 | 19 | 19 | 19 | 20 | 21 | 22 | 22 | 23 | 23 |
| 30 | 61.0 | 106 | 3.000 | 14 | 15 | 15 | 16 | 17 | 18 | 19 | 20 | 20 | 20 | 21 |
| 30 | 46.0 | 106 | 4.000 | 14 | 15 | 15 | 15 | 15 | 15 | 17 | 18 | 19 | 19 | 19 |
| 30 | 16.0 | 106 | 6.000 | 11 | 12 | 12 | 13 | 13 | 14 | 14 | 16 | 16 | 17 | 18 |

X-Bridging Requirements – Reference Standard Specification **Section 904.5 Bridging** on page 96

| | | | | | | | | | |
|-------|--------|--------|--------|--------|--------|--------|--------|--------|---------|
| 1 row | 2 rows | 3 rows | 4 rows | 5 rows | 6 rows | 7 rows | 8 rows | 9 rows | 10 rows |
|-------|--------|--------|--------|--------|--------|--------|--------|--------|---------|

Bearing Seat Depth – Profiles to the right of a colored line have a seat depth indicated in the chart below

| | | | |
|------------|-----|-----|--------------|
| Minimum 5" | 7½" | 10" | Maximum 12½" |
|------------|-----|-----|--------------|

Gable Joist (SPGB) Tables

| Span ft | End Depth in | Center Depth in | Top Chord Pitch in/ft | Top Chord Uniform Load - Pounds per Linear Foot (plf) (ASD) | | | | | | | | | | |
|------------|--------------------|-----------------------|--------------------------------|---|-----|-----|-----|-----|-----|-----|-----|-----|-----|-----|
| | | | | 300 | 350 | 400 | 450 | 500 | 550 | 600 | 650 | 700 | 750 | 800 |
| | | | | Joist Self-Weight - Pounds per Linear Foot (plf) | | | | | | | | | | |
| 40 | 19.0 | 24 | 0.250 | 11 | 13 | 14 | 16 | 17 | 20 | 21 | 23 | 25 | 26 | 28 |
| 40 | 16.5 | 24 | 0.375 | 11 | 13 | 14 | 16 | 18 | 19 | 21 | 23 | 25 | 27 | 27 |
| 40 | 14.0 | 24 | 0.500 | 12 | 14 | 15 | 16 | 18 | 20 | 21 | 25 | 25 | 28 | 29 |
| 40 | 11.5 | 24 | 0.625 | 12 | 14 | 16 | 17 | 19 | 20 | 22 | 25 | 28 | 28 | 29 |
| 40 | 9.0 | 24 | 0.750 | 13 | 15 | 16 | 17 | 20 | 21 | 25 | 25 | 28 | 29 | 31 |
| 40 | 6.5 | 24 | 0.875 | 13 | 16 | 17 | 20 | 21 | 24 | 25 | 28 | 29 | 31 | 34 |
| 40 | 20.0 | 30 | 0.500 | 9 | 11 | 12 | 13 | 15 | 17 | 18 | 18 | 20 | 21 | 22 |
| 40 | 17.5 | 30 | 0.625 | 10 | 11 | 13 | 14 | 15 | 17 | 18 | 19 | 20 | 22 | 23 |
| 40 | 15.0 | 30 | 0.750 | 10 | 11 | 13 | 14 | 16 | 16 | 18 | 20 | 21 | 22 | 24 |
| 40 | 12.5 | 30 | 0.875 | 10 | 11 | 13 | 15 | 16 | 18 | 18 | 20 | 21 | 23 | 25 |
| 40 | 10.0 | 30 | 1.000 | 10 | 12 | 13 | 15 | 17 | 18 | 20 | 20 | 22 | 25 | 26 |
| 40 | 5.0 | 30 | 1.250 | 12 | 13 | 16 | 17 | 19 | 20 | 22 | 26 | 26 | 28 | 29 |
| 40 | 25.5 | 38 | 0.625 | 9 | 10 | 11 | 12 | 13 | 14 | 15 | 16 | 17 | 19 | 19 |
| 40 | 23.0 | 38 | 0.750 | 9 | 10 | 11 | 12 | 13 | 14 | 15 | 16 | 17 | 19 | 19 |
| 40 | 20.5 | 38 | 0.875 | 9 | 10 | 11 | 12 | 13 | 14 | 15 | 16 | 17 | 19 | 19 |
| 40 | 18.0 | 38 | 1.000 | 9 | 10 | 11 | 12 | 14 | 14 | 15 | 17 | 17 | 19 | 19 |
| 40 | 13.0 | 38 | 1.250 | 9 | 10 | 11 | 12 | 14 | 15 | 16 | 17 | 18 | 19 | 20 |
| 40 | 8.0 | 38 | 1.500 | 9 | 10 | 12 | 13 | 15 | 16 | 17 | 19 | 20 | 20 | 22 |
| 40 | 31.0 | 46 | 0.750 | 8 | 10 | 10 | 12 | 13 | 14 | 14 | 15 | 16 | 17 | 18 |
| 40 | 28.5 | 46 | 0.875 | 8 | 10 | 11 | 12 | 13 | 14 | 14 | 15 | 16 | 17 | 18 |
| 40 | 26.0 | 46 | 1.000 | 8 | 9 | 10 | 12 | 13 | 13 | 14 | 15 | 16 | 17 | 18 |
| 40 | 21.0 | 46 | 1.250 | 9 | 10 | 10 | 11 | 13 | 14 | 14 | 15 | 16 | 17 | 18 |
| 40 | 16.0 | 46 | 1.500 | 9 | 9 | 10 | 12 | 12 | 14 | 14 | 16 | 16 | 18 | 18 |
| 40 | 6.0 | 46 | 2.000 | 8 | 10 | 10 | 12 | 14 | 14 | 15 | 17 | 18 | 19 | 21 |
| 40 | 41.0 | 56 | 0.750 | 9 | 11 | 12 | 12 | 13 | 14 | 15 | 15 | 16 | 16 | 18 |
| 40 | 38.5 | 56 | 0.875 | 9 | 10 | 11 | 12 | 13 | 14 | 15 | 15 | 16 | 17 | 18 |
| 40 | 36.0 | 56 | 1.000 | 9 | 10 | 11 | 12 | 13 | 14 | 14 | 15 | 16 | 17 | 18 |
| 40 | 31.0 | 56 | 1.250 | 9 | 10 | 11 | 12 | 13 | 14 | 14 | 15 | 15 | 17 | 17 |
| 40 | 26.0 | 56 | 1.500 | 9 | 9 | 11 | 12 | 13 | 14 | 14 | 15 | 16 | 17 | 18 |
| 40 | 16.0 | 56 | 2.000 | 8 | 9 | 10 | 11 | 13 | 14 | 15 | 15 | 16 | 17 | 17 |
| 40 | 48.5 | 66 | 0.875 | 10 | 11 | 12 | 13 | 14 | 15 | 15 | 16 | 16 | 17 | 18 |
| 40 | 46.0 | 66 | 1.000 | 10 | 11 | 12 | 13 | 14 | 15 | 15 | 15 | 17 | 17 | 18 |
| 40 | 41.0 | 66 | 1.250 | 10 | 11 | 12 | 13 | 14 | 15 | 15 | 16 | 16 | 17 | 18 |
| 40 | 36.0 | 66 | 1.500 | 9 | 11 | 12 | 13 | 14 | 15 | 15 | 16 | 16 | 17 | 17 |
| 40 | 26.0 | 66 | 2.000 | 9 | 10 | 11 | 12 | 14 | 14 | 15 | 16 | 16 | 17 | 17 |
| 40 | 6.0 | 66 | 3.000 | 9 | 10 | 11 | 11 | 12 | 13 | 14 | 15 | 16 | 17 | 18 |
| 40 | 60.5 | 78 | 0.875 | 12 | 13 | 14 | 15 | 16 | 17 | 18 | 19 | 19 | 20 | 21 |
| 40 | 58.0 | 78 | 1.000 | 12 | 12 | 14 | 14 | 15 | 17 | 18 | 18 | 19 | 19 | 20 |
| 40 | 53.0 | 78 | 1.250 | 11 | 11 | 13 | 14 | 14 | 16 | 16 | 18 | 18 | 19 | 20 |
| 40 | 48.0 | 78 | 1.500 | 11 | 12 | 13 | 14 | 15 | 16 | 16 | 17 | 17 | 18 | 19 |
| 40 | 38.0 | 78 | 2.000 | 10 | 12 | 13 | 13 | 14 | 16 | 16 | 16 | 17 | 18 | 18 |
| 40 | 18.0 | 78 | 3.000 | 9 | 10 | 12 | 13 | 13 | 14 | 15 | 16 | 16 | 17 | 17 |
| 40 | 70.0 | 90 | 1.000 | 15 | 16 | 17 | 19 | 20 | 20 | 21 | 22 | 23 | 23 | 25 |
| 40 | 65.0 | 90 | 1.250 | 14 | 15 | 16 | 17 | 18 | 19 | 20 | 21 | 21 | 22 | 23 |
| 40 | 60.0 | 90 | 1.500 | 13 | 14 | 15 | 15 | 16 | 17 | 19 | 19 | 20 | 20 | 21 |
| 40 | 50.0 | 90 | 2.000 | 12 | 12 | 13 | 14 | 15 | 15 | 16 | 18 | 18 | 19 | 19 |
| 40 | 30.0 | 90 | 3.000 | 10 | 12 | 12 | 14 | 14 | 15 | 16 | 17 | 17 | 18 | 18 |
| 40 | 10.0 | 90 | 4.000 | 10 | 11 | 12 | 13 | 14 | 16 | 16 | 17 | 18 | 18 | 19 |
| 40 | 84.0 | 104 | 1.000 | 18 | 20 | 21 | 21 | 23 | 24 | 25 | 25 | 25 | 26 | 28 |
| 40 | 79.0 | 104 | 1.250 | 17 | 18 | 19 | 20 | 21 | 22 | 23 | 24 | 24 | 25 | 25 |
| 40 | 74.0 | 104 | 1.500 | 17 | 18 | 20 | 20 | 20 | 22 | 23 | 23 | 24 | 24 | 26 |
| 40 | 64.0 | 104 | 2.000 | 15 | 16 | 17 | 18 | 20 | 20 | 21 | 22 | 22 | 23 | 24 |
| 40 | 44.0 | 104 | 3.000 | 13 | 13 | 14 | 14 | 15 | 17 | 17 | 19 | 20 | 20 | 21 |
| 40 | 24.0 | 104 | 4.000 | 12 | 13 | 13 | 15 | 15 | 17 | 18 | 18 | 19 | 19 | 21 |
| 40 | 100.0 | 120 | 1.000 | 25 | 25 | 26 | 27 | 28 | 29 | 29 | 30 | 32 | 33 | 33 |
| 40 | 95.0 | 120 | 1.250 | 24 | 25 | 25 | 27 | 27 | 27 | 28 | 29 | 30 | 30 | 32 |
| 40 | 90.0 | 120 | 1.500 | 22 | 23 | 23 | 24 | 25 | 26 | 26 | 27 | 28 | 30 | 30 |
| 40 | 80.0 | 120 | 2.000 | 20 | 21 | 21 | 22 | 23 | 24 | 25 | 26 | 26 | 26 | 27 |
| 40 | 60.0 | 120 | 3.000 | 17 | 18 | 19 | 20 | 21 | 22 | 23 | 23 | 25 | 25 | 25 |
| 40 | 40.0 | 120 | 4.000 | 16 | 16 | 17 | 18 | 18 | 21 | 21 | 21 | 23 | 23 | 24 |

X-Bridging Requirements – Reference Standard Specification Section 904.5 Bridging on page 96

| | | | | | | | | | |
|-------|--------|--------|--------|--------|--------|--------|--------|--------|---------|
| 1 row | 2 rows | 3 rows | 4 rows | 5 rows | 6 rows | 7 rows | 8 rows | 9 rows | 10 rows |
|-------|--------|--------|--------|--------|--------|--------|--------|--------|---------|

Bearing Seat Depth – Profiles to the right of a colored line have a seat depth indicated in the chart below

| | | | |
|------------|-----|-----|--------------|
| Minimum 5" | 7½" | 10" | Maximum 12½" |
|------------|-----|-----|--------------|



Gable Joist (SPGB) Tables

| Span ft | End Depth in | Center Depth in | Top Chord Pitch in/ft | Top Chord Uniform Load - Pounds per Linear Foot (plf) (ASD) | | | | | | | | | | |
|------------|--------------------|-----------------------|--------------------------------|---|-----|-----|-----|-----|-----|-----|-----|-----|-----|-----|
| | | | | 300 | 350 | 400 | 450 | 500 | 550 | 600 | 650 | 700 | 750 | 800 |
| | | | | Joist Self-Weight - Pounds per Linear Foot (plf) | | | | | | | | | | |
| 50 | 21.8 | 28 | 0.250 | 14 | 16 | 18 | 21 | 24 | 25 | 28 | 29 | 32 | 33 | 36 |
| 50 | 18.6 | 28 | 0.375 | 15 | 17 | 20 | 21 | 25 | 26 | 29 | 31 | 32 | 36 | 38 |
| 50 | 15.5 | 28 | 0.500 | 15 | 17 | 20 | 22 | 25 | 28 | 29 | 30 | 33 | 36 | 37 |
| 50 | 12.4 | 28 | 0.625 | 15 | 18 | 20 | 23 | 25 | 28 | 29 | 32 | 36 | 37 | 39 |
| 50 | 9.3 | 28 | 0.750 | 16 | 19 | 21 | 25 | 28 | 29 | 32 | 36 | 38 | 40 | 41 |
| 50 | 6.1 | 28 | 0.875 | 17 | 21 | 24 | 28 | 29 | 32 | 37 | 38 | 42 | 51 | 51 |
| 50 | 26.6 | 36 | 0.375 | 12 | 13 | 16 | 17 | 19 | 20 | 22 | 25 | 26 | 28 | 29 |
| 50 | 23.5 | 36 | 0.500 | 12 | 14 | 16 | 17 | 19 | 20 | 22 | 25 | 26 | 28 | 29 |
| 50 | 20.4 | 36 | 0.625 | 12 | 14 | 16 | 18 | 19 | 21 | 22 | 25 | 26 | 28 | 30 |
| 50 | 17.3 | 36 | 0.750 | 13 | 14 | 16 | 18 | 20 | 21 | 23 | 26 | 28 | 29 | 31 |
| 50 | 14.1 | 36 | 0.875 | 13 | 15 | 17 | 18 | 20 | 21 | 25 | 26 | 28 | 29 | 31 |
| 50 | 11.0 | 36 | 1.000 | 13 | 16 | 18 | 19 | 21 | 23 | 25 | 28 | 29 | 31 | 32 |
| 50 | 28.4 | 44 | 0.625 | 11 | 12 | 14 | 15 | 17 | 19 | 19 | 21 | 23 | 24 | 26 |
| 50 | 25.3 | 44 | 0.750 | 11 | 12 | 14 | 15 | 17 | 19 | 19 | 21 | 22 | 24 | 26 |
| 50 | 22.1 | 44 | 0.875 | 11 | 12 | 14 | 15 | 17 | 19 | 19 | 21 | 22 | 25 | 26 |
| 50 | 19.0 | 44 | 1.000 | 11 | 12 | 14 | 15 | 17 | 19 | 20 | 22 | 24 | 26 | 26 |
| 50 | 12.8 | 44 | 1.250 | 11 | 13 | 15 | 16 | 18 | 20 | 21 | 23 | 26 | 26 | 28 |
| 50 | 6.5 | 44 | 1.500 | 14 | 15 | 17 | 18 | 20 | 22 | 25 | 26 | 28 | 30 | 31 |
| 50 | 38.4 | 54 | 0.625 | 11 | 12 | 13 | 15 | 16 | 18 | 18 | 20 | 21 | 21 | 23 |
| 50 | 35.3 | 54 | 0.750 | 11 | 12 | 13 | 15 | 16 | 17 | 18 | 20 | 21 | 21 | 23 |
| 50 | 32.1 | 54 | 0.875 | 11 | 12 | 13 | 14 | 16 | 17 | 18 | 19 | 21 | 22 | 23 |
| 50 | 29.0 | 54 | 1.000 | 11 | 12 | 13 | 14 | 16 | 17 | 18 | 19 | 20 | 21 | 23 |
| 50 | 22.8 | 54 | 1.250 | 11 | 12 | 13 | 14 | 16 | 17 | 18 | 20 | 21 | 22 | 23 |
| 50 | 16.5 | 54 | 1.500 | 11 | 11 | 13 | 14 | 16 | 18 | 18 | 20 | 21 | 23 | 23 |
| 50 | 45.3 | 64 | 0.750 | 12 | 12 | 14 | 16 | 16 | 17 | 18 | 18 | 20 | 20 | 21 |
| 50 | 42.1 | 64 | 0.875 | 12 | 13 | 13 | 15 | 16 | 16 | 18 | 19 | 19 | 20 | 21 |
| 50 | 39.0 | 64 | 1.000 | 11 | 13 | 13 | 15 | 16 | 17 | 18 | 19 | 19 | 20 | 22 |
| 50 | 32.8 | 64 | 1.250 | 11 | 12 | 14 | 15 | 16 | 16 | 18 | 18 | 19 | 19 | 21 |
| 50 | 26.5 | 64 | 1.500 | 11 | 12 | 13 | 14 | 15 | 16 | 18 | 19 | 19 | 20 | 21 |
| 50 | 14.0 | 64 | 2.000 | 11 | 11 | 13 | 14 | 16 | 16 | 18 | 19 | 20 | 21 | 22 |
| 50 | 57.3 | 76 | 0.750 | 13 | 13 | 15 | 15 | 17 | 17 | 19 | 20 | 21 | 22 | 22 |
| 50 | 54.1 | 76 | 0.875 | 12 | 13 | 14 | 16 | 16 | 17 | 18 | 21 | 21 | 21 | 22 |
| 50 | 51.0 | 76 | 1.000 | 12 | 13 | 14 | 16 | 16 | 17 | 18 | 21 | 21 | 21 | 22 |
| 50 | 44.8 | 76 | 1.250 | 12 | 13 | 15 | 16 | 17 | 17 | 18 | 20 | 21 | 21 | 22 |
| 50 | 38.5 | 76 | 1.500 | 12 | 13 | 14 | 15 | 16 | 17 | 18 | 19 | 20 | 20 | 21 |
| 50 | 26.0 | 76 | 2.000 | 12 | 13 | 14 | 16 | 17 | 17 | 18 | 19 | 19 | 20 | 20 |
| 50 | 68.1 | 90 | 0.875 | 15 | 15 | 16 | 18 | 20 | 20 | 21 | 23 | 24 | 24 | 27 |
| 50 | 65.0 | 90 | 1.000 | 15 | 16 | 17 | 19 | 19 | 19 | 20 | 22 | 23 | 24 | 25 |
| 50 | 58.8 | 90 | 1.250 | 14 | 15 | 16 | 17 | 18 | 20 | 20 | 22 | 22 | 23 | 23 |
| 50 | 52.5 | 90 | 1.500 | 14 | 14 | 16 | 17 | 17 | 19 | 19 | 21 | 21 | 23 | 23 |
| 50 | 40.0 | 90 | 2.000 | 13 | 14 | 15 | 16 | 16 | 18 | 19 | 20 | 21 | 22 | 23 |
| 50 | 15.0 | 90 | 3.000 | 12 | 13 | 14 | 15 | 17 | 18 | 18 | 19 | 19 | 21 | 22 |
| 50 | 82.1 | 104 | 0.875 | 19 | 21 | 22 | 22 | 23 | 24 | 24 | 26 | 26 | 27 | 29 |
| 50 | 79.0 | 104 | 1.000 | 18 | 19 | 20 | 22 | 22 | 22 | 24 | 26 | 26 | 27 | 27 |
| 50 | 72.8 | 104 | 1.250 | 17 | 19 | 20 | 21 | 22 | 22 | 23 | 25 | 26 | 27 | 27 |
| 50 | 66.5 | 104 | 1.500 | 16 | 17 | 18 | 19 | 21 | 21 | 21 | 22 | 24 | 26 | 26 |
| 50 | 54.0 | 104 | 2.000 | 15 | 15 | 17 | 18 | 20 | 20 | 22 | 22 | 22 | 23 | 23 |
| 50 | 29.0 | 104 | 3.000 | 13 | 14 | 15 | 16 | 20 | 20 | 20 | 20 | 20 | 21 | 22 |
| 50 | 95.0 | 120 | 1.000 | 27 | 28 | 28 | 28 | 29 | 29 | 31 | 32 | 32 | 35 | 35 |
| 50 | 88.8 | 120 | 1.250 | 24 | 25 | 25 | 26 | 29 | 29 | 29 | 30 | 31 | 33 | 35 |
| 50 | 82.5 | 120 | 1.500 | 22 | 24 | 24 | 25 | 27 | 28 | 28 | 29 | 30 | 31 | 33 |
| 50 | 70.0 | 120 | 2.000 | 20 | 20 | 22 | 23 | 24 | 24 | 24 | 26 | 27 | 28 | 29 |
| 50 | 45.0 | 120 | 3.000 | 17 | 18 | 18 | 20 | 22 | 22 | 23 | 23 | 24 | 26 | 27 |
| 50 | 20.0 | 120 | 4.000 | 16 | 17 | 18 | 19 | 21 | 21 | 22 | 22 | 23 | 24 | 25 |
| 50 | 111.0 | 136 | 1.000 | 30 | 31 | 32 | 33 | 34 | 36 | 37 | 37 | 37 | 39 | 41 |
| 50 | 104.8 | 136 | 1.250 | 27 | 29 | 29 | 30 | 31 | 32 | 34 | 35 | 36 | 36 | 38 |
| 50 | 98.5 | 136 | 1.500 | 27 | 28 | 29 | 29 | 30 | 31 | 31 | 33 | 35 | 35 | 36 |
| 50 | 86.0 | 136 | 2.000 | 27 | 27 | 27 | 29 | 30 | 31 | 31 | 31 | 33 | 35 | 36 |
| 50 | 61.0 | 136 | 3.000 | 21 | 22 | 23 | 24 | 27 | 27 | 27 | 27 | 28 | 29 | 31 |
| 50 | 36.0 | 136 | 4.000 | 20 | 20 | 21 | 22 | 23 | 25 | 25 | 25 | 25 | 27 | 28 |

X-Bridging Requirements – Reference Standard Specification Section 904.5 Bridging on page 96

| | | | | | | | | | |
|-------|--------|--------|--------|--------|--------|--------|--------|--------|---------|
| 1 row | 2 rows | 3 rows | 4 rows | 5 rows | 6 rows | 7 rows | 8 rows | 9 rows | 10 rows |
|-------|--------|--------|--------|--------|--------|--------|--------|--------|---------|

Bearing Seat Depth – Profiles to the right of a colored line have a seat depth indicated in the chart below

| | | | |
|------------|-----|-----|--------------|
| Minimum 5" | 7½" | 10" | Maximum 12½" |
|------------|-----|-----|--------------|

Gable Joist (SPGB) Tables

| Span ft | End Depth in | Center Depth in | Top Chord Pitch in/ft | Top Chord Uniform Load - Pounds per Linear Foot (plf) (ASD) | | | | | | | | | | |
|------------|--------------------|-----------------------|--------------------------------|---|-----|-----|-----|-----|-----|-----|-----|-----|-----|-----|
| | | | | 300 | 350 | 400 | 450 | 500 | 550 | 600 | 650 | 700 | 750 | 800 |
| | | | | Joist Self-Weight - Pounds per Linear Foot (plf) | | | | | | | | | | |
| 60 | 24.5 | 32 | 0.250 | 17 | 20 | 25 | 26 | 29 | 32 | 34 | 37 | 40 | 46 | 50 |
| 60 | 20.8 | 32 | 0.375 | 18 | 21 | 25 | 28 | 29 | 31 | 36 | 37 | 40 | 46 | 50 |
| 60 | 17.0 | 32 | 0.500 | 18 | 21 | 25 | 27 | 30 | 32 | 36 | 39 | 41 | 50 | 51 |
| 60 | 13.3 | 32 | 0.625 | 19 | 22 | 25 | 29 | 32 | 35 | 38 | 41 | 51 | 51 | 51 |
| 60 | 9.5 | 32 | 0.750 | 21 | 25 | 28 | 31 | 34 | 38 | 41 | 47 | 51 | 51 | 57 |
| 60 | 5.8 | 32 | 0.875 | 23 | 28 | 29 | 34 | 38 | 42 | 52 | 52 | 57 | 60 | 60 |
| 60 | 28.8 | 40 | 0.375 | 15 | 17 | 19 | 22 | 24 | 26 | 28 | 30 | 33 | 34 | 37 |
| 60 | 25.0 | 40 | 0.500 | 15 | 18 | 20 | 22 | 24 | 26 | 28 | 31 | 33 | 36 | 38 |
| 60 | 21.3 | 40 | 0.625 | 16 | 18 | 20 | 21 | 25 | 28 | 29 | 31 | 33 | 36 | 38 |
| 60 | 17.5 | 40 | 0.750 | 16 | 19 | 20 | 23 | 25 | 28 | 29 | 32 | 35 | 36 | 39 |
| 60 | 13.8 | 40 | 0.875 | 17 | 19 | 21 | 24 | 26 | 29 | 31 | 34 | 37 | 39 | 42 |
| 60 | 10.0 | 40 | 1.000 | 18 | 20 | 22 | 26 | 28 | 32 | 32 | 37 | 40 | 42 | 48 |
| 60 | 31.3 | 50 | 0.625 | 14 | 16 | 18 | 20 | 21 | 23 | 24 | 26 | 28 | 29 | 32 |
| 60 | 27.5 | 50 | 0.750 | 14 | 16 | 18 | 19 | 21 | 23 | 25 | 26 | 29 | 31 | 32 |
| 60 | 23.8 | 50 | 0.875 | 14 | 16 | 18 | 19 | 21 | 23 | 26 | 27 | 28 | 31 | 33 |
| 60 | 20.0 | 50 | 1.000 | 14 | 16 | 18 | 20 | 21 | 24 | 26 | 28 | 29 | 32 | 34 |
| 60 | 12.5 | 50 | 1.250 | 15 | 17 | 19 | 20 | 23 | 26 | 29 | 30 | 32 | 33 | 37 |
| 60 | 5.0 | 50 | 1.500 | 17 | 19 | 22 | 25 | 29 | 30 | 32 | 35 | 37 | 40 | 42 |
| 60 | 41.3 | 60 | 0.625 | 14 | 15 | 16 | 18 | 19 | 21 | 22 | 24 | 24 | 26 | 28 |
| 60 | 37.5 | 60 | 0.750 | 14 | 15 | 16 | 18 | 19 | 21 | 22 | 24 | 24 | 26 | 29 |
| 60 | 33.8 | 60 | 0.875 | 14 | 15 | 17 | 18 | 20 | 21 | 22 | 24 | 25 | 27 | 29 |
| 60 | 30.0 | 60 | 1.000 | 14 | 15 | 17 | 19 | 20 | 21 | 22 | 24 | 25 | 27 | 28 |
| 60 | 22.5 | 60 | 1.250 | 14 | 15 | 16 | 18 | 20 | 21 | 23 | 25 | 26 | 27 | 29 |
| 60 | 15.0 | 60 | 1.500 | 14 | 15 | 17 | 19 | 20 | 21 | 24 | 26 | 27 | 29 | 31 |
| 60 | 49.5 | 72 | 0.750 | 15 | 16 | 17 | 17 | 19 | 20 | 21 | 23 | 25 | 25 | 27 |
| 60 | 45.8 | 72 | 0.875 | 15 | 16 | 17 | 17 | 19 | 20 | 21 | 22 | 25 | 25 | 26 |
| 60 | 42.0 | 72 | 1.000 | 15 | 16 | 17 | 18 | 19 | 20 | 21 | 23 | 24 | 25 | 27 |
| 60 | 34.5 | 72 | 1.250 | 14 | 15 | 17 | 18 | 19 | 20 | 20 | 22 | 25 | 25 | 26 |
| 60 | 27.0 | 72 | 1.500 | 14 | 15 | 16 | 18 | 19 | 19 | 21 | 22 | 24 | 25 | 26 |
| 60 | 12.0 | 72 | 2.000 | 14 | 15 | 17 | 19 | 20 | 21 | 22 | 24 | 26 | 27 | 28 |
| 60 | 63.5 | 86 | 0.750 | 16 | 17 | 18 | 19 | 21 | 21 | 23 | 24 | 25 | 27 | 28 |
| 60 | 59.8 | 86 | 0.875 | 16 | 17 | 18 | 19 | 19 | 21 | 23 | 24 | 25 | 27 | 28 |
| 60 | 56.0 | 86 | 1.000 | 15 | 16 | 17 | 18 | 20 | 21 | 22 | 24 | 25 | 26 | 28 |
| 60 | 48.5 | 86 | 1.250 | 15 | 16 | 17 | 18 | 20 | 20 | 21 | 22 | 26 | 26 | 26 |
| 60 | 41.0 | 86 | 1.500 | 15 | 16 | 17 | 17 | 19 | 20 | 21 | 22 | 24 | 25 | 26 |
| 60 | 26.0 | 86 | 2.000 | 15 | 16 | 17 | 18 | 18 | 20 | 21 | 22 | 23 | 25 | 25 |
| 60 | 73.8 | 100 | 0.875 | 23 | 23 | 23 | 24 | 24 | 25 | 26 | 27 | 28 | 29 | 29 |
| 60 | 70.0 | 100 | 1.000 | 22 | 22 | 23 | 24 | 24 | 25 | 25 | 26 | 29 | 29 | 29 |
| 60 | 62.5 | 100 | 1.250 | 22 | 22 | 23 | 23 | 23 | 24 | 25 | 25 | 27 | 28 | 29 |
| 60 | 55.0 | 100 | 1.500 | 21 | 22 | 22 | 23 | 23 | 24 | 24 | 25 | 26 | 28 | 28 |
| 60 | 40.0 | 100 | 2.000 | 22 | 22 | 22 | 22 | 22 | 23 | 24 | 25 | 26 | 27 | 27 |
| 60 | 10.0 | 100 | 3.000 | 21 | 21 | 22 | 22 | 23 | 23 | 23 | 24 | 24 | 26 | 26 |
| 60 | 89.8 | 116 | 0.875 | 27 | 28 | 28 | 29 | 30 | 30 | 30 | 31 | 33 | 34 | 35 |
| 60 | 86.0 | 116 | 1.000 | 26 | 27 | 27 | 27 | 29 | 29 | 29 | 30 | 32 | 32 | 34 |
| 60 | 78.5 | 116 | 1.250 | 25 | 25 | 25 | 26 | 28 | 29 | 29 | 29 | 31 | 31 | 33 |
| 60 | 71.0 | 116 | 1.500 | 24 | 25 | 25 | 25 | 27 | 27 | 29 | 29 | 30 | 30 | 31 |
| 60 | 56.0 | 116 | 2.000 | 23 | 24 | 24 | 25 | 25 | 25 | 27 | 28 | 28 | 28 | 29 |
| 60 | 26.0 | 116 | 3.000 | 23 | 23 | 23 | 23 | 24 | 24 | 25 | 27 | 27 | 28 | 28 |
| 60 | 102.0 | 132 | 1.000 | 31 | 32 | 34 | 34 | 35 | 36 | 38 | 39 | 39 | 39 | 40 |
| 60 | 94.5 | 132 | 1.250 | 30 | 30 | 31 | 32 | 33 | 33 | 34 | 34 | 36 | 37 | 37 |
| 60 | 87.0 | 132 | 1.500 | 29 | 29 | 30 | 31 | 32 | 32 | 32 | 33 | 33 | 35 | 37 |
| 60 | 72.0 | 132 | 2.000 | 28 | 28 | 28 | 28 | 30 | 30 | 31 | 31 | 33 | 33 | 33 |
| 60 | 42.0 | 132 | 3.000 | 25 | 25 | 26 | 26 | 27 | 27 | 27 | 29 | 30 | 30 | 30 |
| 60 | 12.0 | 132 | 4.000 | 24 | 24 | 25 | 25 | 26 | 26 | 26 | 29 | 29 | 29 | 29 |
| 60 | 118.0 | 148 | 1.000 | 36 | 36 | 37 | 37 | 39 | 40 | 41 | 41 | 41 | 43 | 47 |
| 60 | 110.5 | 148 | 1.250 | 36 | 38 | 38 | 39 | 40 | 42 | 42 | 43 | 43 | 44 | 46 |
| 60 | 103.0 | 148 | 1.500 | 34 | 35 | 36 | 36 | 38 | 39 | 40 | 42 | 42 | 42 | 43 |
| 60 | 88.0 | 148 | 2.000 | 32 | 32 | 33 | 34 | 35 | 35 | 35 | 37 | 37 | 38 | 40 |
| 60 | 58.0 | 148 | 3.000 | 30 | 30 | 30 | 31 | 31 | 32 | 33 | 34 | 34 | 34 | 35 |
| 60 | 28.0 | 148 | 4.000 | 28 | 28 | 28 | 28 | 28 | 31 | 31 | 31 | 31 | 32 | 32 |

X-Bridging Requirements – Reference Standard Specification Section 904.5 Bridging on page 96

| | | | | | | | | | |
|-------|--------|--------|--------|--------|--------|--------|--------|--------|---------|
| 1 row | 2 rows | 3 rows | 4 rows | 5 rows | 6 rows | 7 rows | 8 rows | 9 rows | 10 rows |
|-------|--------|--------|--------|--------|--------|--------|--------|--------|---------|

Bearing Seat Depth – Profiles to the right of a colored line have a seat depth indicated in the chart below

| | | | |
|------------|-----|-----|--------------|
| Minimum 5" | 7½" | 10" | Maximum 12½" |
|------------|-----|-----|--------------|



Gable Joist (SPGB) Tables

| Span ft | End Depth in | Center Depth in | Top Chord Pitch in/ft | Top Chord Uniform Load - Pounds per Linear Foot (plf) (ASD) | | | | | | | | | | |
|------------|--------------------|-----------------------|--------------------------------|---|-----|-----|-----|-----|-----|-----|-----|-----|-----|-----|
| | | | | 300 | 350 | 400 | 450 | 500 | 550 | 600 | 650 | 700 | 750 | 800 |
| | | | | Joist Self-Weight - Pounds per Linear Foot (plf) | | | | | | | | | | |
| 70 | 27.3 | 36 | 0.250 | 21 | 25 | 29 | 32 | 35 | 39 | 45 | 50 | 50 | 55 | 58 |
| 70 | 22.9 | 36 | 0.375 | 21 | 25 | 28 | 31 | 35 | 39 | 46 | 50 | 50 | 55 | 58 |
| 70 | 18.5 | 36 | 0.500 | 22 | 26 | 29 | 32 | 35 | 39 | 46 | 50 | 51 | 58 | 58 |
| 70 | 14.1 | 36 | 0.625 | 24 | 28 | 30 | 34 | 37 | 41 | 51 | 51 | 55 | 59 | 63 |
| 70 | 9.8 | 36 | 0.750 | 25 | 29 | 32 | 38 | 41 | 52 | 52 | 57 | 60 | 63 | 67 |
| 70 | 5.4 | 36 | 0.875 | 29 | 32 | 38 | 42 | 52 | 52 | 60 | 64 | 68 | 76 | 82 |
| 70 | 32.9 | 46 | 0.375 | 20 | 21 | 23 | 26 | 29 | 30 | 33 | 36 | 38 | 40 | 47 |
| 70 | 28.5 | 46 | 0.500 | 20 | 20 | 24 | 26 | 28 | 31 | 33 | 36 | 39 | 41 | 46 |
| 70 | 24.1 | 46 | 0.625 | 20 | 21 | 24 | 26 | 29 | 32 | 34 | 37 | 40 | 42 | 51 |
| 70 | 19.8 | 46 | 0.750 | 19 | 22 | 25 | 28 | 30 | 32 | 37 | 38 | 42 | 46 | 51 |
| 70 | 15.4 | 46 | 0.875 | 20 | 22 | 26 | 29 | 31 | 34 | 37 | 40 | 48 | 51 | 51 |
| 70 | 11.0 | 46 | 1.000 | 20 | 25 | 28 | 29 | 32 | 37 | 40 | 41 | 51 | 52 | 52 |
| 70 | 36.1 | 58 | 0.625 | 20 | 20 | 21 | 23 | 24 | 26 | 29 | 31 | 33 | 35 | 37 |
| 70 | 31.8 | 58 | 0.750 | 20 | 20 | 21 | 22 | 25 | 27 | 29 | 31 | 33 | 35 | 37 |
| 70 | 27.4 | 58 | 0.875 | 20 | 20 | 21 | 23 | 25 | 27 | 29 | 31 | 34 | 35 | 37 |
| 70 | 23.0 | 58 | 1.000 | 20 | 20 | 21 | 23 | 26 | 27 | 29 | 32 | 35 | 37 | 38 |
| 70 | 14.3 | 58 | 1.250 | 20 | 20 | 22 | 25 | 27 | 29 | 32 | 35 | 38 | 39 | 43 |
| 70 | 5.5 | 58 | 1.500 | 20 | 22 | 26 | 29 | 32 | 35 | 38 | 41 | 48 | 52 | 52 |
| 70 | 48.1 | 70 | 0.625 | 20 | 21 | 21 | 21 | 23 | 24 | 25 | 27 | 30 | 32 | 33 |
| 70 | 43.8 | 70 | 0.750 | 20 | 20 | 21 | 22 | 23 | 24 | 25 | 27 | 30 | 32 | 34 |
| 70 | 39.4 | 70 | 0.875 | 20 | 20 | 21 | 21 | 23 | 24 | 25 | 27 | 30 | 32 | 34 |
| 70 | 35.0 | 70 | 1.000 | 20 | 20 | 21 | 21 | 22 | 24 | 26 | 27 | 30 | 32 | 33 |
| 70 | 26.3 | 70 | 1.250 | 20 | 20 | 21 | 22 | 22 | 24 | 27 | 28 | 30 | 33 | 34 |
| 70 | 17.5 | 70 | 1.500 | 20 | 20 | 21 | 22 | 23 | 25 | 27 | 29 | 32 | 33 | 35 |
| 70 | 57.8 | 84 | 0.750 | 21 | 21 | 22 | 23 | 23 | 25 | 26 | 27 | 30 | 31 | 33 |
| 70 | 53.4 | 84 | 0.875 | 21 | 21 | 22 | 23 | 24 | 25 | 26 | 27 | 29 | 31 | 32 |
| 70 | 49.0 | 84 | 1.000 | 21 | 21 | 22 | 22 | 23 | 25 | 26 | 26 | 29 | 31 | 32 |
| 70 | 40.3 | 84 | 1.250 | 21 | 21 | 21 | 22 | 23 | 24 | 25 | 26 | 28 | 31 | 32 |
| 70 | 31.5 | 84 | 1.500 | 21 | 21 | 21 | 22 | 23 | 24 | 25 | 26 | 28 | 30 | 33 |
| 70 | 14.0 | 84 | 2.000 | 20 | 21 | 21 | 22 | 23 | 24 | 26 | 29 | 30 | 31 | 34 |
| 70 | 71.8 | 98 | 0.750 | 23 | 24 | 24 | 24 | 25 | 27 | 28 | 28 | 30 | 32 | 33 |
| 70 | 67.4 | 98 | 0.875 | 23 | 23 | 23 | 23 | 25 | 25 | 27 | 28 | 29 | 32 | 32 |
| 70 | 63.0 | 98 | 1.000 | 23 | 23 | 23 | 24 | 24 | 25 | 27 | 28 | 29 | 31 | 33 |
| 70 | 54.3 | 98 | 1.250 | 22 | 22 | 23 | 23 | 24 | 25 | 26 | 27 | 29 | 31 | 32 |
| 70 | 45.5 | 98 | 1.500 | 22 | 22 | 23 | 23 | 23 | 24 | 26 | 26 | 27 | 29 | 32 |
| 70 | 28.0 | 98 | 2.000 | 21 | 22 | 22 | 23 | 23 | 24 | 25 | 26 | 28 | 29 | 31 |
| 70 | 81.4 | 112 | 0.875 | 25 | 27 | 27 | 27 | 27 | 30 | 30 | 30 | 32 | 35 | 35 |
| 70 | 77.0 | 112 | 1.000 | 24 | 26 | 26 | 26 | 27 | 30 | 30 | 30 | 31 | 32 | 33 |
| 70 | 68.3 | 112 | 1.250 | 25 | 25 | 26 | 26 | 27 | 28 | 29 | 30 | 31 | 32 | 35 |
| 70 | 59.5 | 112 | 1.500 | 24 | 24 | 24 | 25 | 26 | 27 | 28 | 29 | 30 | 33 | 33 |
| 70 | 42.0 | 112 | 2.000 | 23 | 23 | 23 | 24 | 25 | 26 | 27 | 28 | 29 | 32 | 33 |
| 70 | 7.0 | 112 | 3.000 | 22 | 23 | 23 | 23 | 24 | 25 | 26 | 27 | 29 | 31 | 33 |
| 70 | 95.4 | 126 | 0.875 | 28 | 28 | 29 | 31 | 31 | 31 | 32 | 34 | 36 | 36 | 38 |
| 70 | 91.0 | 126 | 1.000 | 28 | 28 | 31 | 31 | 31 | 33 | 34 | 36 | 36 | 38 | 38 |
| 70 | 82.3 | 126 | 1.250 | 27 | 29 | 29 | 30 | 32 | 32 | 32 | 32 | 34 | 38 | 38 |
| 70 | 73.5 | 126 | 1.500 | 26 | 27 | 28 | 29 | 29 | 31 | 31 | 32 | 33 | 33 | 37 |
| 70 | 56.0 | 126 | 2.000 | 26 | 26 | 27 | 27 | 28 | 29 | 30 | 30 | 32 | 34 | 35 |
| 70 | 21.0 | 126 | 3.000 | 24 | 24 | 25 | 26 | 26 | 27 | 27 | 29 | 31 | 31 | 34 |
| 70 | 109.4 | 140 | 0.875 | 34 | 36 | 36 | 37 | 39 | 40 | 40 | 42 | 42 | 44 | 47 |
| 70 | 105.0 | 140 | 1.000 | 32 | 36 | 36 | 36 | 38 | 38 | 39 | 41 | 41 | 41 | 43 |
| 70 | 96.3 | 140 | 1.250 | 31 | 32 | 33 | 34 | 34 | 35 | 36 | 38 | 39 | 40 | 41 |
| 70 | 87.5 | 140 | 1.500 | 30 | 30 | 33 | 34 | 35 | 35 | 35 | 37 | 38 | 39 | 40 |
| 70 | 70.0 | 140 | 2.000 | 28 | 30 | 30 | 31 | 32 | 33 | 33 | 34 | 35 | 36 | 38 |
| 70 | 35.0 | 140 | 3.000 | 26 | 26 | 27 | 27 | 28 | 29 | 30 | 30 | 31 | 32 | 35 |
| 70 | 119.0 | 154 | 1.000 | 40 | 40 | 42 | 43 | 44 | 44 | 46 | 48 | 53 | 53 | 54 |
| 70 | 110.3 | 154 | 1.250 | 37 | 38 | 38 | 38 | 41 | 41 | 42 | 43 | 44 | 44 | 47 |
| 70 | 101.5 | 154 | 1.500 | 34 | 36 | 37 | 37 | 38 | 40 | 41 | 42 | 42 | 43 | 44 |
| 70 | 84.0 | 154 | 2.000 | 32 | 32 | 34 | 35 | 36 | 37 | 37 | 37 | 40 | 41 | 42 |
| 70 | 49.0 | 154 | 3.000 | 29 | 29 | 30 | 30 | 32 | 32 | 33 | 33 | 34 | 35 | 37 |
| 70 | 14.0 | 154 | 4.000 | 27 | 27 | 29 | 29 | 29 | 31 | 31 | 32 | 33 | 33 | 36 |

X-Bridging Requirements – Reference Standard Specification Section 904.5 Bridging on page 96

| | | | | | | | | | |
|-------|--------|--------|--------|--------|--------|--------|--------|--------|---------|
| 1 row | 2 rows | 3 rows | 4 rows | 5 rows | 6 rows | 7 rows | 8 rows | 9 rows | 10 rows |
|-------|--------|--------|--------|--------|--------|--------|--------|--------|---------|

Bearing Seat Depth – Profiles to the right of a colored line have a seat depth indicated in the chart below

| | | | |
|------------|-----|-----|--------------|
| Minimum 5" | 7½" | 10" | Maximum 12½" |
|------------|-----|-----|--------------|

Gable Joist (SPGB) Tables

| Span ft | End Depth in | Center Depth in | Top Chord Pitch in/ft | Top Chord Uniform Load - Pounds per Linear Foot (plf) (ASD) | | | | | | | | | | |
|------------|--------------------|-----------------------|--------------------------------|---|-----|-----|-----|-----|-----|-----|-----|-----|-----|-----|
| | | | | 300 | 350 | 400 | 450 | 500 | 550 | 600 | 650 | 700 | 750 | 800 |
| | | | | Joist Self-Weight - Pounds per Linear Foot (plf) | | | | | | | | | | |
| 80 | 30.0 | 40 | 0.250 | 26 | 30 | 34 | 38 | 44 | 50 | 50 | 57 | 62 | 65 | 70 |
| 80 | 25.0 | 40 | 0.375 | 26 | 30 | 35 | 38 | 46 | 50 | 50 | 58 | 62 | 65 | 70 |
| 80 | 20.0 | 40 | 0.500 | 26 | 31 | 34 | 39 | 46 | 51 | 51 | 58 | 62 | 66 | 70 |
| 80 | 15.0 | 40 | 0.625 | 28 | 32 | 36 | 41 | 51 | 51 | 54 | 59 | 66 | 66 | 74 |
| 80 | 10.0 | 40 | 0.750 | 29 | 34 | 40 | 52 | 52 | 55 | 60 | 67 | 67 | 75 | 85 |
| 80 | 5.0 | 40 | 0.875 | 34 | 39 | 52 | 52 | 60 | 67 | 67 | 82 | 85 | 98 | 106 |
| 80 | 35.0 | 50 | 0.375 | 21 | 25 | 28 | 30 | 33 | 36 | 40 | 42 | 51 | 51 | 51 |
| 80 | 30.0 | 50 | 0.500 | 21 | 26 | 28 | 30 | 34 | 37 | 40 | 47 | 50 | 51 | 52 |
| 80 | 25.0 | 50 | 0.625 | 22 | 26 | 28 | 31 | 34 | 38 | 41 | 51 | 51 | 51 | 55 |
| 80 | 20.0 | 50 | 0.750 | 22 | 26 | 30 | 33 | 37 | 40 | 42 | 51 | 52 | 52 | 59 |
| 80 | 15.0 | 50 | 0.875 | 23 | 28 | 30 | 34 | 39 | 42 | 52 | 52 | 52 | 59 | 59 |
| 80 | 10.0 | 50 | 1.000 | 26 | 29 | 33 | 37 | 41 | 51 | 52 | 53 | 60 | 60 | 67 |
| 80 | 42.0 | 62 | 0.500 | 21 | 22 | 23 | 27 | 29 | 32 | 33 | 36 | 38 | 42 | 48 |
| 80 | 37.0 | 62 | 0.625 | 21 | 21 | 24 | 27 | 29 | 32 | 35 | 36 | 38 | 41 | 48 |
| 80 | 32.0 | 62 | 0.750 | 21 | 22 | 25 | 26 | 29 | 32 | 35 | 38 | 39 | 43 | 47 |
| 80 | 27.0 | 62 | 0.875 | 20 | 21 | 24 | 27 | 29 | 32 | 35 | 37 | 41 | 47 | 52 |
| 80 | 22.0 | 62 | 1.000 | 20 | 23 | 26 | 28 | 30 | 33 | 38 | 39 | 42 | 47 | 52 |
| 80 | 12.0 | 62 | 1.250 | 21 | 25 | 29 | 30 | 33 | 38 | 41 | 43 | 52 | 52 | 52 |
| 80 | 51.0 | 76 | 0.625 | 21 | 21 | 23 | 24 | 26 | 29 | 31 | 33 | 35 | 38 | 39 |
| 80 | 46.0 | 76 | 0.750 | 21 | 21 | 22 | 24 | 26 | 28 | 31 | 33 | 35 | 37 | 39 |
| 80 | 41.0 | 76 | 0.875 | 21 | 21 | 23 | 24 | 27 | 28 | 31 | 33 | 35 | 37 | 39 |
| 80 | 36.0 | 76 | 1.000 | 20 | 21 | 22 | 24 | 26 | 29 | 31 | 34 | 35 | 38 | 40 |
| 80 | 26.0 | 76 | 1.250 | 20 | 21 | 23 | 24 | 27 | 30 | 33 | 33 | 36 | 39 | 42 |
| 80 | 16.0 | 76 | 1.500 | 21 | 21 | 23 | 27 | 30 | 32 | 33 | 36 | 39 | 41 | 44 |
| 80 | 60.0 | 90 | 0.750 | 22 | 22 | 23 | 25 | 26 | 28 | 30 | 32 | 34 | 36 | 38 |
| 80 | 55.0 | 90 | 0.875 | 22 | 22 | 23 | 24 | 26 | 27 | 30 | 32 | 34 | 35 | 38 |
| 80 | 50.0 | 90 | 1.000 | 22 | 22 | 23 | 25 | 25 | 28 | 31 | 32 | 35 | 36 | 38 |
| 80 | 40.0 | 90 | 1.250 | 21 | 22 | 22 | 24 | 25 | 28 | 30 | 31 | 34 | 37 | 37 |
| 80 | 30.0 | 90 | 1.500 | 21 | 21 | 22 | 24 | 25 | 28 | 30 | 32 | 34 | 36 | 38 |
| 80 | 10.0 | 90 | 2.000 | 21 | 22 | 22 | 26 | 28 | 31 | 32 | 36 | 36 | 40 | 43 |
| 80 | 74.0 | 104 | 0.750 | 24 | 24 | 26 | 27 | 29 | 29 | 31 | 33 | 35 | 36 | 39 |
| 80 | 69.0 | 104 | 0.875 | 23 | 24 | 25 | 26 | 28 | 28 | 30 | 33 | 35 | 36 | 38 |
| 80 | 64.0 | 104 | 1.000 | 23 | 24 | 25 | 26 | 27 | 28 | 31 | 32 | 34 | 36 | 37 |
| 80 | 54.0 | 104 | 1.250 | 23 | 23 | 24 | 25 | 26 | 27 | 29 | 32 | 33 | 34 | 37 |
| 80 | 44.0 | 104 | 1.500 | 22 | 23 | 24 | 25 | 26 | 27 | 29 | 30 | 33 | 35 | 36 |
| 80 | 24.0 | 104 | 2.000 | 22 | 22 | 23 | 24 | 25 | 27 | 29 | 31 | 33 | 35 | 36 |
| 80 | 88.0 | 118 | 0.750 | 28 | 28 | 28 | 29 | 31 | 31 | 33 | 36 | 38 | 38 | 41 |
| 80 | 83.0 | 118 | 0.875 | 27 | 27 | 29 | 30 | 30 | 31 | 32 | 35 | 35 | 37 | 39 |
| 80 | 78.0 | 118 | 1.000 | 27 | 27 | 28 | 28 | 30 | 31 | 31 | 33 | 36 | 36 | 39 |
| 80 | 68.0 | 118 | 1.250 | 26 | 26 | 27 | 28 | 29 | 30 | 32 | 33 | 35 | 37 | 38 |
| 80 | 58.0 | 118 | 1.500 | 24 | 25 | 26 | 26 | 29 | 29 | 31 | 33 | 35 | 35 | 38 |
| 80 | 38.0 | 118 | 2.000 | 24 | 24 | 25 | 26 | 27 | 28 | 29 | 32 | 34 | 36 | 37 |
| 80 | 97.0 | 132 | 0.875 | 31 | 31 | 33 | 34 | 34 | 35 | 37 | 39 | 41 | 42 | 43 |
| 80 | 92.0 | 132 | 1.000 | 30 | 31 | 32 | 33 | 33 | 34 | 35 | 37 | 40 | 41 | 42 |
| 80 | 82.0 | 132 | 1.250 | 29 | 30 | 30 | 32 | 33 | 33 | 34 | 36 | 38 | 40 | 41 |
| 80 | 72.0 | 132 | 1.500 | 27 | 29 | 30 | 31 | 31 | 32 | 33 | 35 | 38 | 38 | 41 |
| 80 | 52.0 | 132 | 2.000 | 26 | 27 | 28 | 28 | 30 | 31 | 32 | 35 | 36 | 38 | 39 |
| 80 | 12.0 | 132 | 3.000 | 25 | 25 | 25 | 27 | 28 | 28 | 30 | 32 | 35 | 35 | 38 |
| 80 | 111.0 | 146 | 0.875 | 33 | 35 | 36 | 37 | 38 | 39 | 41 | 42 | 42 | 44 | 47 |
| 80 | 106.0 | 146 | 1.000 | 33 | 34 | 35 | 35 | 37 | 37 | 39 | 41 | 45 | 45 | 46 |
| 80 | 96.0 | 146 | 1.250 | 34 | 35 | 35 | 37 | 37 | 39 | 39 | 42 | 43 | 44 | 45 |
| 80 | 86.0 | 146 | 1.500 | 32 | 34 | 34 | 34 | 34 | 36 | 37 | 39 | 41 | 42 | 42 |
| 80 | 66.0 | 146 | 2.000 | 29 | 31 | 31 | 34 | 34 | 34 | 35 | 38 | 40 | 40 | 42 |
| 80 | 26.0 | 146 | 3.000 | 27 | 27 | 27 | 30 | 30 | 30 | 32 | 33 | 35 | 37 | 39 |
| 80 | 125.0 | 160 | 0.875 | 41 | 42 | 43 | 45 | 46 | 47 | 47 | 49 | 54 | 54 | 55 |
| 80 | 120.0 | 160 | 1.000 | 40 | 40 | 42 | 43 | 45 | 45 | 47 | 49 | 54 | 54 | 54 |
| 80 | 110.0 | 160 | 1.250 | 37 | 38 | 39 | 41 | 42 | 44 | 44 | 44 | 46 | 49 | 52 |
| 80 | 100.0 | 160 | 1.500 | 38 | 40 | 40 | 41 | 42 | 43 | 43 | 43 | 48 | 49 | 49 |
| 80 | 80.0 | 160 | 2.000 | 34 | 35 | 36 | 38 | 38 | 38 | 39 | 41 | 41 | 44 | 45 |
| 80 | 40.0 | 160 | 3.000 | 29 | 31 | 32 | 32 | 34 | 35 | 36 | 37 | 38 | 40 | 42 |

X-Bridging Requirements – Reference Standard Specification Section 904.5 Bridging on page 96

| | | | | | | | | | |
|-------|--------|--------|--------|--------|--------|--------|--------|--------|---------|
| 1 row | 2 rows | 3 rows | 4 rows | 5 rows | 6 rows | 7 rows | 8 rows | 9 rows | 10 rows |
|-------|--------|--------|--------|--------|--------|--------|--------|--------|---------|

Bearing Seat Depth – Profiles to the right of a colored line have a seat depth indicated in the chart below

| | | | |
|------------|-----|-----|--------------|
| Minimum 5" | 7½" | 10" | Maximum 12½" |
|------------|-----|-----|--------------|



Gable Joist (SPGB) Tables

| Span ft | End Depth in | Center Depth in | Top Chord Pitch in/ft | Top Chord Uniform Load - Pounds per Linear Foot (plf) (ASD) | | | | | | | | | | |
|------------|--------------------|-----------------------|--------------------------------|---|-----|-----|-----|-----|-----|-----|-----|-----|-----|-----|
| | | | | 300 | 350 | 400 | 450 | 500 | 550 | 600 | 650 | 700 | 750 | 800 |
| | | | | Joist Self-Weight - Pounds per Linear Foot (plf) | | | | | | | | | | |
| 90 | 34.8 | 46 | 0.250 | 28 | 32 | 36 | 40 | 46 | 50 | 54 | 58 | 66 | 71 | 73 |
| 90 | 29.1 | 46 | 0.375 | 28 | 32 | 36 | 40 | 50 | 50 | 54 | 58 | 65 | 70 | 73 |
| 90 | 23.5 | 46 | 0.500 | 30 | 32 | 38 | 41 | 50 | 51 | 59 | 59 | 66 | 69 | 74 |
| 90 | 17.9 | 46 | 0.625 | 29 | 34 | 40 | 51 | 51 | 56 | 59 | 66 | 66 | 74 | 80 |
| 90 | 12.3 | 46 | 0.750 | 32 | 37 | 41 | 51 | 51 | 60 | 66 | 66 | 75 | 85 | 85 |
| 90 | 6.6 | 46 | 0.875 | 37 | 42 | 52 | 56 | 59 | 67 | 76 | 85 | 85 | 103 | 103 |
| 90 | 41.1 | 58 | 0.375 | 23 | 27 | 30 | 33 | 37 | 40 | 48 | 51 | 52 | 56 | 60 |
| 90 | 35.5 | 58 | 0.500 | 24 | 27 | 30 | 33 | 37 | 40 | 47 | 51 | 51 | 56 | 60 |
| 90 | 29.9 | 58 | 0.625 | 24 | 28 | 31 | 34 | 37 | 40 | 51 | 52 | 52 | 59 | 59 |
| 90 | 24.3 | 58 | 0.750 | 25 | 28 | 32 | 35 | 38 | 42 | 51 | 52 | 56 | 59 | 59 |
| 90 | 18.6 | 58 | 0.875 | 26 | 30 | 33 | 37 | 41 | 46 | 52 | 52 | 60 | 60 | 67 |
| 90 | 13.0 | 58 | 1.000 | 27 | 32 | 34 | 40 | 47 | 52 | 52 | 60 | 60 | 67 | 67 |
| 90 | 49.5 | 72 | 0.500 | 23 | 24 | 26 | 29 | 33 | 35 | 38 | 40 | 43 | 49 | 53 |
| 90 | 43.9 | 72 | 0.625 | 23 | 24 | 26 | 30 | 32 | 36 | 37 | 40 | 42 | 49 | 53 |
| 90 | 38.3 | 72 | 0.750 | 23 | 24 | 27 | 30 | 33 | 36 | 39 | 42 | 48 | 49 | 53 |
| 90 | 32.6 | 72 | 0.875 | 22 | 24 | 27 | 29 | 32 | 35 | 38 | 41 | 47 | 53 | 53 |
| 90 | 27.0 | 72 | 1.000 | 23 | 25 | 27 | 31 | 32 | 37 | 39 | 41 | 48 | 53 | 53 |
| 90 | 15.8 | 72 | 1.250 | 24 | 27 | 30 | 32 | 35 | 39 | 43 | 53 | 53 | 53 | 61 |
| 90 | 57.9 | 86 | 0.625 | 24 | 25 | 25 | 27 | 31 | 34 | 36 | 37 | 40 | 43 | 49 |
| 90 | 52.3 | 86 | 0.750 | 24 | 24 | 25 | 28 | 31 | 33 | 36 | 37 | 40 | 42 | 48 |
| 90 | 46.6 | 86 | 0.875 | 24 | 24 | 25 | 27 | 30 | 33 | 35 | 38 | 39 | 42 | 48 |
| 90 | 41.0 | 86 | 1.000 | 24 | 24 | 25 | 27 | 30 | 33 | 35 | 38 | 40 | 42 | 47 |
| 90 | 29.8 | 86 | 1.250 | 24 | 24 | 25 | 28 | 30 | 34 | 36 | 38 | 41 | 43 | 48 |
| 90 | 18.5 | 86 | 1.500 | 23 | 25 | 26 | 30 | 32 | 35 | 38 | 40 | 42 | 50 | 53 |
| 90 | 66.3 | 100 | 0.750 | 25 | 25 | 26 | 27 | 30 | 32 | 35 | 37 | 39 | 41 | 44 |
| 90 | 60.6 | 100 | 0.875 | 25 | 25 | 26 | 27 | 29 | 32 | 34 | 37 | 38 | 40 | 43 |
| 90 | 55.0 | 100 | 1.000 | 25 | 25 | 26 | 26 | 29 | 32 | 34 | 39 | 39 | 42 | 44 |
| 90 | 43.8 | 100 | 1.250 | 25 | 25 | 25 | 26 | 29 | 32 | 34 | 37 | 38 | 41 | 44 |
| 90 | 32.5 | 100 | 1.500 | 24 | 24 | 25 | 26 | 28 | 31 | 34 | 36 | 38 | 40 | 44 |
| 90 | 10.0 | 100 | 2.000 | 24 | 24 | 26 | 29 | 32 | 34 | 37 | 40 | 44 | 49 | 54 |
| 90 | 80.3 | 114 | 0.750 | 28 | 28 | 28 | 30 | 31 | 34 | 36 | 38 | 39 | 42 | 43 |
| 90 | 74.6 | 114 | 0.875 | 28 | 28 | 29 | 29 | 30 | 33 | 35 | 37 | 39 | 41 | 43 |
| 90 | 69.0 | 114 | 1.000 | 28 | 28 | 28 | 29 | 30 | 33 | 35 | 37 | 39 | 41 | 43 |
| 90 | 57.8 | 114 | 1.250 | 27 | 27 | 27 | 28 | 29 | 32 | 34 | 36 | 38 | 39 | 41 |
| 90 | 46.5 | 114 | 1.500 | 26 | 27 | 27 | 27 | 29 | 31 | 34 | 36 | 38 | 40 | 41 |
| 90 | 24.0 | 114 | 2.000 | 25 | 25 | 26 | 27 | 29 | 32 | 35 | 37 | 38 | 41 | 43 |
| 90 | 94.3 | 128 | 0.750 | 32 | 32 | 32 | 33 | 34 | 36 | 39 | 41 | 41 | 45 | 46 |
| 90 | 88.6 | 128 | 0.875 | 31 | 31 | 32 | 32 | 33 | 35 | 38 | 39 | 40 | 44 | 45 |
| 90 | 83.0 | 128 | 1.000 | 30 | 31 | 31 | 32 | 33 | 35 | 37 | 39 | 41 | 42 | 45 |
| 90 | 71.8 | 128 | 1.250 | 30 | 30 | 31 | 31 | 32 | 35 | 37 | 38 | 40 | 40 | 44 |
| 90 | 60.5 | 128 | 1.500 | 28 | 29 | 30 | 30 | 30 | 33 | 36 | 37 | 39 | 41 | 43 |
| 90 | 38.0 | 128 | 2.000 | 27 | 28 | 28 | 29 | 30 | 32 | 35 | 37 | 38 | 40 | 42 |
| 90 | 102.6 | 142 | 0.875 | 35 | 35 | 35 | 36 | 38 | 40 | 42 | 43 | 45 | 46 | 50 |
| 90 | 97.0 | 142 | 1.000 | 34 | 34 | 34 | 35 | 38 | 40 | 41 | 41 | 44 | 44 | 49 |
| 90 | 85.8 | 142 | 1.250 | 34 | 34 | 34 | 34 | 35 | 37 | 40 | 43 | 43 | 46 | 46 |
| 90 | 74.5 | 142 | 1.500 | 32 | 32 | 33 | 34 | 34 | 36 | 38 | 40 | 42 | 43 | 45 |
| 90 | 52.0 | 142 | 2.000 | 30 | 30 | 31 | 31 | 32 | 33 | 37 | 38 | 40 | 41 | 43 |
| 90 | 7.0 | 142 | 3.000 | 28 | 28 | 29 | 29 | 31 | 34 | 36 | 38 | 40 | 42 | 44 |
| 90 | 116.6 | 156 | 0.875 | 38 | 39 | 39 | 41 | 43 | 44 | 47 | 50 | 52 | 53 | 55 |
| 90 | 111.0 | 156 | 1.000 | 36 | 40 | 41 | 43 | 45 | 46 | 46 | 49 | 51 | 51 | 54 |
| 90 | 99.8 | 156 | 1.250 | 37 | 38 | 38 | 39 | 39 | 41 | 46 | 46 | 46 | 48 | 51 |
| 90 | 88.5 | 156 | 1.500 | 35 | 35 | 37 | 37 | 37 | 39 | 42 | 45 | 45 | 48 | 48 |
| 90 | 66.0 | 156 | 2.000 | 33 | 34 | 34 | 36 | 36 | 38 | 40 | 42 | 45 | 46 | 48 |
| 90 | 21.0 | 156 | 3.000 | 30 | 31 | 31 | 32 | 34 | 35 | 36 | 38 | 41 | 42 | 44 |
| 90 | 130.6 | 170 | 0.875 | 44 | 46 | 48 | 48 | 49 | 51 | 58 | 58 | 58 | 59 | 60 |
| 90 | 125.0 | 170 | 1.000 | 41 | 42 | 44 | 46 | 47 | 48 | 49 | 52 | 56 | 57 | 59 |
| 90 | 113.8 | 170 | 1.250 | 40 | 43 | 44 | 46 | 48 | 48 | 49 | 51 | 54 | 56 | 57 |
| 90 | 102.5 | 170 | 1.500 | 40 | 40 | 40 | 43 | 45 | 46 | 47 | 48 | 48 | 50 | 56 |
| 90 | 80.0 | 170 | 2.000 | 36 | 36 | 36 | 39 | 41 | 42 | 43 | 44 | 46 | 49 | 53 |
| 90 | 35.0 | 170 | 3.000 | 33 | 33 | 34 | 35 | 35 | 41 | 41 | 41 | 44 | 44 | 47 |

X-Bridging Requirements – Reference Standard Specification Section 904.5 Bridging on page 96

| | | | | | | | | | |
|-------|--------|--------|--------|--------|--------|--------|--------|--------|---------|
| 1 row | 2 rows | 3 rows | 4 rows | 5 rows | 6 rows | 7 rows | 8 rows | 9 rows | 10 rows |
|-------|--------|--------|--------|--------|--------|--------|--------|--------|---------|

Bearing Seat Depth – Profiles to the right of a colored line have a seat depth indicated in the chart below

| | | | |
|------------|-----|-----|--------------|
| Minimum 5" | 7½" | 10" | Maximum 12½" |
|------------|-----|-----|--------------|

Gable Joist (SPGB) Tables

| Span ft | End Depth in | Center Depth in | Top Chord Pitch in/ft | Top Chord Uniform Load - Pounds per Linear Foot (plf) (ASD) | | | | | | | | | | |
|------------|--------------------|-----------------------|--------------------------------|---|-----|-----|-----|-----|-----|-----|-----|-----|-----|-----|
| | | | | 300 | 350 | 400 | 450 | 500 | 550 | 600 | 650 | 700 | 750 | 800 |
| | | | | Joist Self-Weight - Pounds per Linear Foot (plf) | | | | | | | | | | |
| 100 | 37.5 | 50 | 0.250 | 32 | 36 | 45 | 50 | 54 | 58 | 63 | 71 | 74 | 82 | 92 |
| 100 | 31.3 | 50 | 0.375 | 32 | 36 | 47 | 50 | 55 | 58 | 62 | 70 | 73 | 83 | 92 |
| 100 | 25.0 | 50 | 0.500 | 32 | 38 | 46 | 50 | 55 | 59 | 66 | 71 | 74 | 83 | 93 |
| 100 | 18.8 | 50 | 0.625 | 34 | 40 | 50 | 51 | 59 | 63 | 66 | 75 | 80 | 84 | 100 |
| 100 | 12.5 | 50 | 0.750 | 37 | 41 | 51 | 56 | 60 | 67 | 75 | 85 | 85 | 103 | 103 |
| 100 | 6.3 | 50 | 0.875 | 41 | 52 | 60 | 63 | 73 | 81 | 84 | 103 | 119 | 128 | 128 |
| 100 | 43.3 | 62 | 0.375 | 27 | 30 | 34 | 37 | 42 | 51 | 52 | 56 | 59 | 63 | 67 |
| 100 | 37.0 | 62 | 0.500 | 27 | 30 | 34 | 39 | 42 | 51 | 51 | 56 | 59 | 64 | 67 |
| 100 | 30.8 | 62 | 0.625 | 28 | 31 | 34 | 38 | 47 | 51 | 52 | 59 | 59 | 67 | 68 |
| 100 | 24.5 | 62 | 0.750 | 28 | 31 | 37 | 40 | 47 | 51 | 56 | 60 | 64 | 67 | 72 |
| 100 | 18.3 | 62 | 0.875 | 30 | 33 | 39 | 42 | 51 | 51 | 59 | 59 | 68 | 71 | 74 |
| 100 | 12.0 | 62 | 1.000 | 32 | 38 | 42 | 52 | 52 | 60 | 60 | 67 | 75 | 81 | 85 |
| 100 | 51.0 | 76 | 0.500 | 25 | 28 | 30 | 34 | 37 | 39 | 43 | 49 | 54 | 55 | 58 |
| 100 | 44.8 | 76 | 0.625 | 24 | 27 | 30 | 33 | 37 | 39 | 42 | 48 | 53 | 54 | 57 |
| 100 | 38.5 | 76 | 0.750 | 24 | 27 | 30 | 33 | 38 | 42 | 48 | 53 | 53 | 57 | 61 |
| 100 | 32.3 | 76 | 0.875 | 24 | 28 | 31 | 35 | 38 | 42 | 48 | 52 | 53 | 56 | 61 |
| 100 | 26.0 | 76 | 1.000 | 25 | 29 | 32 | 35 | 38 | 43 | 52 | 52 | 53 | 60 | 61 |
| 100 | 13.5 | 76 | 1.250 | 27 | 31 | 35 | 39 | 42 | 52 | 53 | 57 | 61 | 65 | 69 |
| 100 | 58.8 | 90 | 0.625 | 25 | 25 | 28 | 31 | 35 | 37 | 40 | 43 | 49 | 50 | 55 |
| 100 | 52.5 | 90 | 0.750 | 25 | 25 | 28 | 32 | 36 | 39 | 40 | 43 | 48 | 50 | 55 |
| 100 | 46.3 | 90 | 0.875 | 24 | 26 | 29 | 32 | 35 | 38 | 41 | 44 | 50 | 50 | 54 |
| 100 | 40.0 | 90 | 1.000 | 24 | 26 | 28 | 31 | 35 | 37 | 40 | 43 | 50 | 54 | 55 |
| 100 | 27.5 | 90 | 1.250 | 24 | 27 | 30 | 33 | 36 | 39 | 42 | 48 | 53 | 54 | 55 |
| 100 | 15.0 | 90 | 1.500 | 25 | 28 | 32 | 35 | 39 | 42 | 49 | 54 | 54 | 58 | 62 |
| 100 | 72.8 | 104 | 0.625 | 27 | 27 | 28 | 31 | 34 | 36 | 39 | 41 | 44 | 49 | 51 |
| 100 | 66.5 | 104 | 0.750 | 26 | 27 | 28 | 31 | 33 | 36 | 38 | 42 | 44 | 48 | 51 |
| 100 | 60.3 | 104 | 0.875 | 26 | 26 | 27 | 32 | 34 | 37 | 38 | 42 | 44 | 48 | 50 |
| 100 | 54.0 | 104 | 1.000 | 25 | 26 | 27 | 31 | 34 | 36 | 38 | 41 | 44 | 49 | 50 |
| 100 | 41.5 | 104 | 1.250 | 25 | 26 | 28 | 31 | 34 | 37 | 39 | 41 | 44 | 48 | 51 |
| 100 | 29.0 | 104 | 1.500 | 25 | 25 | 28 | 31 | 34 | 36 | 39 | 43 | 44 | 50 | 55 |
| 100 | 80.5 | 118 | 0.750 | 29 | 30 | 31 | 32 | 35 | 37 | 40 | 40 | 43 | 47 | 50 |
| 100 | 74.3 | 118 | 0.875 | 28 | 29 | 30 | 32 | 35 | 37 | 39 | 41 | 43 | 46 | 50 |
| 100 | 68.0 | 118 | 1.000 | 28 | 28 | 30 | 32 | 35 | 37 | 39 | 41 | 43 | 46 | 49 |
| 100 | 55.5 | 118 | 1.250 | 27 | 28 | 29 | 31 | 34 | 36 | 38 | 42 | 42 | 46 | 49 |
| 100 | 43.0 | 118 | 1.500 | 27 | 27 | 28 | 31 | 33 | 36 | 39 | 41 | 43 | 46 | 49 |
| 100 | 18.0 | 118 | 2.000 | 26 | 26 | 29 | 31 | 33 | 36 | 39 | 42 | 45 | 51 | 51 |
| 100 | 94.5 | 132 | 0.750 | 32 | 32 | 34 | 35 | 38 | 40 | 42 | 43 | 46 | 49 | 52 |
| 100 | 88.3 | 132 | 0.875 | 31 | 31 | 33 | 34 | 36 | 39 | 40 | 42 | 45 | 47 | 52 |
| 100 | 82.0 | 132 | 1.000 | 31 | 32 | 33 | 34 | 37 | 38 | 40 | 42 | 46 | 46 | 54 |
| 100 | 69.5 | 132 | 1.250 | 30 | 30 | 31 | 33 | 35 | 37 | 39 | 41 | 44 | 46 | 51 |
| 100 | 57.0 | 132 | 1.500 | 29 | 30 | 30 | 31 | 35 | 36 | 38 | 41 | 44 | 44 | 51 |
| 100 | 32.0 | 132 | 2.000 | 28 | 28 | 29 | 31 | 33 | 36 | 38 | 41 | 42 | 46 | 50 |
| 100 | 108.5 | 146 | 0.750 | 37 | 37 | 37 | 41 | 43 | 45 | 46 | 48 | 50 | 50 | 57 |
| 100 | 102.3 | 146 | 0.875 | 35 | 35 | 37 | 38 | 38 | 40 | 43 | 46 | 48 | 50 | 55 |
| 100 | 96.0 | 146 | 1.000 | 35 | 35 | 36 | 37 | 40 | 41 | 43 | 45 | 48 | 49 | 55 |
| 100 | 83.5 | 146 | 1.250 | 34 | 34 | 35 | 36 | 38 | 41 | 42 | 44 | 46 | 49 | 54 |
| 100 | 71.0 | 146 | 1.500 | 32 | 32 | 34 | 34 | 37 | 38 | 41 | 43 | 45 | 46 | 53 |
| 100 | 46.0 | 146 | 2.000 | 30 | 31 | 31 | 32 | 36 | 37 | 40 | 42 | 43 | 45 | 52 |
| 100 | 116.3 | 160 | 0.875 | 40 | 40 | 41 | 44 | 46 | 47 | 48 | 50 | 53 | 58 | 59 |
| 100 | 110.0 | 160 | 1.000 | 39 | 39 | 41 | 42 | 44 | 46 | 47 | 49 | 53 | 57 | 58 |
| 100 | 97.5 | 160 | 1.250 | 38 | 39 | 40 | 40 | 42 | 46 | 46 | 50 | 50 | 57 | 57 |
| 100 | 85.0 | 160 | 1.500 | 35 | 37 | 38 | 40 | 42 | 44 | 45 | 47 | 49 | 54 | 57 |
| 100 | 60.0 | 160 | 2.000 | 33 | 35 | 35 | 36 | 38 | 41 | 43 | 46 | 46 | 48 | 51 |
| 100 | 10.0 | 160 | 3.000 | 31 | 31 | 32 | 34 | 36 | 39 | 40 | 43 | 46 | 48 | 52 |
| 100 | 130.3 | 174 | 0.875 | 44 | 46 | 48 | 49 | 49 | 52 | 57 | 58 | 59 | 59 | 64 |
| 100 | 124.0 | 174 | 1.000 | 44 | 46 | 48 | 48 | 51 | 51 | 54 | 56 | 57 | 62 | 63 |
| 100 | 111.5 | 174 | 1.250 | 41 | 41 | 45 | 46 | 49 | 49 | 51 | 53 | 59 | 59 | 61 |
| 100 | 99.0 | 174 | 1.500 | 39 | 41 | 41 | 43 | 45 | 50 | 50 | 51 | 55 | 56 | 58 |
| 100 | 74.0 | 174 | 2.000 | 38 | 39 | 39 | 40 | 42 | 45 | 47 | 47 | 49 | 57 | 57 |
| 100 | 24.0 | 174 | 3.000 | 32 | 34 | 35 | 36 | 38 | 40 | 42 | 44 | 46 | 52 | 52 |

X-Bridging Requirements – Reference Standard Specification Section 904.5 Bridging on page 96

| | | | | | | | | | |
|-------|--------|--------|--------|--------|--------|--------|--------|--------|---------|
| 1 row | 2 rows | 3 rows | 4 rows | 5 rows | 6 rows | 7 rows | 8 rows | 9 rows | 10 rows |
|-------|--------|--------|--------|--------|--------|--------|--------|--------|---------|

Bearing Seat Depth – Profiles to the right of a colored line have a seat depth indicated in the chart below

| | | | |
|------------|-----|-----|--------------|
| Minimum 5" | 7½" | 10" | Maximum 12½" |
|------------|-----|-----|--------------|



Gable Joist (SPGB) Tables

| Span ft | End Depth in | Center Depth in | Top Chord Pitch in/ft | Top Chord Uniform Load - Pounds per Linear Foot (plf) (ASD) | | | | | | | | | | |
|------------|--------------------|-----------------------|--------------------------------|---|-----|-----|-----|-----|-----|-----|-----|-----|-----|-----|
| | | | | 300 | 350 | 400 | 450 | 500 | 550 | 600 | 650 | 700 | 750 | 800 |
| | | | | Joist Self-Weight - Pounds per Linear Foot (plf) | | | | | | | | | | |
| 110 | 42.3 | 56 | 0.250 | 34 | 39 | 46 | 51 | 55 | 63 | 66 | 73 | 79 | 83 | 93 |
| 110 | 35.4 | 56 | 0.375 | 34 | 39 | 46 | 50 | 59 | 62 | 66 | 73 | 79 | 84 | 93 |
| 110 | 28.5 | 56 | 0.500 | 34 | 39 | 50 | 51 | 59 | 62 | 66 | 74 | 82 | 83 | 100 |
| 110 | 21.6 | 56 | 0.625 | 36 | 41 | 51 | 54 | 59 | 66 | 75 | 80 | 84 | 101 | 101 |
| 110 | 14.8 | 56 | 0.750 | 40 | 52 | 52 | 59 | 67 | 71 | 81 | 85 | 103 | 103 | 117 |
| 110 | 7.9 | 56 | 0.875 | 47 | 51 | 60 | 67 | 76 | 85 | 102 | 102 | 120 | 127 | 127 |
| 110 | 47.4 | 68 | 0.375 | 29 | 34 | 38 | 41 | 52 | 52 | 56 | 60 | 64 | 68 | 72 |
| 110 | 40.5 | 68 | 0.500 | 29 | 33 | 37 | 42 | 52 | 52 | 56 | 60 | 68 | 68 | 75 |
| 110 | 33.6 | 68 | 0.625 | 30 | 34 | 38 | 47 | 51 | 52 | 59 | 60 | 67 | 71 | 75 |
| 110 | 26.8 | 68 | 0.750 | 31 | 35 | 40 | 48 | 51 | 55 | 59 | 64 | 67 | 76 | 80 |
| 110 | 19.9 | 68 | 0.875 | 32 | 37 | 42 | 52 | 52 | 60 | 64 | 67 | 75 | 80 | 85 |
| 110 | 13.0 | 68 | 1.000 | 34 | 40 | 52 | 52 | 60 | 64 | 67 | 75 | 82 | 86 | 95 |
| 110 | 52.5 | 80 | 0.500 | 28 | 30 | 34 | 38 | 42 | 49 | 54 | 54 | 58 | 62 | 65 |
| 110 | 45.6 | 80 | 0.625 | 27 | 30 | 34 | 39 | 42 | 48 | 54 | 54 | 58 | 62 | 66 |
| 110 | 38.8 | 80 | 0.750 | 27 | 30 | 35 | 39 | 42 | 49 | 53 | 58 | 61 | 62 | 65 |
| 110 | 31.9 | 80 | 0.875 | 27 | 31 | 36 | 38 | 43 | 52 | 53 | 58 | 61 | 64 | 69 |
| 110 | 25.0 | 80 | 1.000 | 29 | 32 | 38 | 42 | 48 | 53 | 53 | 59 | 61 | 68 | 71 |
| 110 | 11.3 | 80 | 1.250 | 33 | 38 | 41 | 53 | 53 | 61 | 61 | 68 | 72 | 77 | 87 |
| 110 | 57.6 | 92 | 0.625 | 28 | 29 | 32 | 36 | 40 | 43 | 48 | 50 | 55 | 59 | 59 |
| 110 | 50.8 | 92 | 0.750 | 28 | 29 | 32 | 36 | 39 | 43 | 50 | 50 | 55 | 59 | 60 |
| 110 | 43.9 | 92 | 0.875 | 28 | 29 | 32 | 37 | 40 | 43 | 50 | 54 | 55 | 58 | 63 |
| 110 | 37.0 | 92 | 1.000 | 28 | 29 | 33 | 37 | 40 | 43 | 50 | 54 | 55 | 58 | 63 |
| 110 | 23.3 | 92 | 1.250 | 28 | 30 | 33 | 40 | 42 | 49 | 53 | 54 | 58 | 62 | 66 |
| 110 | 9.5 | 92 | 1.500 | 30 | 35 | 38 | 44 | 53 | 54 | 58 | 62 | 69 | 70 | 77 |
| 110 | 69.6 | 104 | 0.625 | 29 | 31 | 33 | 36 | 39 | 42 | 45 | 50 | 52 | 53 | 58 |
| 110 | 62.8 | 104 | 0.750 | 28 | 30 | 32 | 35 | 38 | 41 | 43 | 50 | 52 | 52 | 60 |
| 110 | 55.9 | 104 | 0.875 | 28 | 29 | 32 | 35 | 37 | 41 | 44 | 49 | 52 | 56 | 60 |
| 110 | 49.0 | 104 | 1.000 | 28 | 29 | 31 | 34 | 37 | 40 | 43 | 48 | 51 | 56 | 59 |
| 110 | 35.3 | 104 | 1.250 | 28 | 29 | 31 | 35 | 38 | 41 | 44 | 50 | 55 | 56 | 59 |
| 110 | 21.5 | 104 | 1.500 | 28 | 29 | 33 | 37 | 40 | 43 | 49 | 54 | 55 | 59 | 62 |
| 110 | 74.8 | 116 | 0.750 | 31 | 32 | 33 | 36 | 38 | 40 | 43 | 45 | 50 | 53 | 55 |
| 110 | 67.9 | 116 | 0.875 | 30 | 31 | 33 | 36 | 38 | 40 | 43 | 45 | 50 | 52 | 55 |
| 110 | 61.0 | 116 | 1.000 | 30 | 30 | 33 | 35 | 38 | 39 | 42 | 45 | 51 | 52 | 54 |
| 110 | 47.3 | 116 | 1.250 | 29 | 30 | 31 | 34 | 38 | 39 | 42 | 45 | 51 | 53 | 57 |
| 110 | 33.5 | 116 | 1.500 | 28 | 30 | 32 | 34 | 37 | 40 | 43 | 49 | 51 | 57 | 58 |
| 110 | 6.0 | 116 | 2.000 | 29 | 32 | 36 | 40 | 43 | 50 | 55 | 55 | 63 | 64 | 67 |
| 110 | 86.8 | 128 | 0.750 | 34 | 34 | 36 | 38 | 39 | 41 | 45 | 47 | 52 | 53 | 56 |
| 110 | 79.9 | 128 | 0.875 | 32 | 34 | 35 | 37 | 39 | 41 | 44 | 46 | 51 | 52 | 55 |
| 110 | 73.0 | 128 | 1.000 | 32 | 34 | 35 | 37 | 38 | 41 | 44 | 47 | 50 | 53 | 54 |
| 110 | 59.3 | 128 | 1.250 | 31 | 32 | 34 | 37 | 37 | 40 | 43 | 46 | 50 | 51 | 54 |
| 110 | 45.5 | 128 | 1.500 | 30 | 31 | 33 | 35 | 38 | 41 | 44 | 46 | 50 | 52 | 54 |
| 110 | 18.0 | 128 | 2.000 | 29 | 31 | 32 | 35 | 38 | 41 | 44 | 51 | 52 | 56 | 58 |
| 110 | 98.8 | 140 | 0.750 | 35 | 37 | 40 | 41 | 43 | 44 | 46 | 49 | 53 | 54 | 56 |
| 110 | 91.9 | 140 | 0.875 | 36 | 37 | 38 | 40 | 41 | 44 | 44 | 48 | 51 | 55 | 55 |
| 110 | 85.0 | 140 | 1.000 | 35 | 36 | 37 | 39 | 40 | 42 | 45 | 48 | 52 | 53 | 54 |
| 110 | 71.3 | 140 | 1.250 | 33 | 34 | 35 | 37 | 40 | 40 | 43 | 46 | 52 | 52 | 54 |
| 110 | 57.5 | 140 | 1.500 | 33 | 34 | 35 | 37 | 39 | 40 | 42 | 46 | 51 | 51 | 52 |
| 110 | 30.0 | 140 | 2.000 | 31 | 32 | 34 | 35 | 38 | 41 | 42 | 46 | 51 | 53 | 54 |
| 110 | 110.8 | 152 | 0.750 | 39 | 42 | 42 | 45 | 45 | 48 | 49 | 52 | 57 | 58 | 58 |
| 110 | 103.9 | 152 | 0.875 | 38 | 40 | 41 | 43 | 45 | 46 | 49 | 52 | 53 | 56 | 59 |
| 110 | 97.0 | 152 | 1.000 | 37 | 39 | 40 | 42 | 43 | 45 | 48 | 51 | 55 | 55 | 58 |
| 110 | 83.3 | 152 | 1.250 | 37 | 38 | 39 | 41 | 42 | 43 | 45 | 48 | 51 | 55 | 56 |
| 110 | 69.5 | 152 | 1.500 | 35 | 36 | 37 | 39 | 42 | 42 | 44 | 48 | 53 | 54 | 55 |
| 110 | 42.0 | 152 | 2.000 | 33 | 34 | 36 | 37 | 39 | 40 | 43 | 46 | 52 | 52 | 54 |
| 110 | 122.8 | 164 | 0.750 | 44 | 45 | 48 | 48 | 49 | 50 | 52 | 58 | 59 | 61 | 62 |
| 110 | 115.9 | 164 | 0.875 | 43 | 45 | 45 | 47 | 48 | 48 | 51 | 54 | 58 | 60 | 61 |
| 110 | 109.0 | 164 | 1.000 | 42 | 43 | 44 | 46 | 47 | 48 | 50 | 53 | 59 | 59 | 60 |
| 110 | 95.3 | 164 | 1.250 | 40 | 42 | 43 | 44 | 46 | 47 | 49 | 52 | 56 | 57 | 60 |
| 110 | 81.5 | 164 | 1.500 | 39 | 39 | 40 | 43 | 44 | 44 | 47 | 50 | 52 | 57 | 58 |
| 110 | 54.0 | 164 | 2.000 | 36 | 37 | 38 | 41 | 43 | 43 | 45 | 48 | 53 | 55 | 55 |

X-Bridging Requirements – Reference Standard Specification Section 904.5 Bridging on page 96

| | | | | | | | | | |
|-------|--------|--------|--------|--------|--------|--------|--------|--------|---------|
| 1 row | 2 rows | 3 rows | 4 rows | 5 rows | 6 rows | 7 rows | 8 rows | 9 rows | 10 rows |
|-------|--------|--------|--------|--------|--------|--------|--------|--------|---------|

Bearing Seat Depth – Profiles to the right of a colored line have a seat depth indicated in the chart below

| | | | |
|------------|-----|-----|--------------|
| Minimum 5" | 7½" | 10" | Maximum 12½" |
|------------|-----|-----|--------------|

Gable Joist (SPGB) Tables

| Span ft | End Depth in | Center Depth in | Top Chord Pitch in/ft | Top Chord Uniform Load - Pounds per Linear Foot (plf) (ASD) | | | | | | | | | | |
|------------|--------------------|-----------------------|--------------------------------|---|-----|-----|-----|-----|-----|-----|-----|-----|-----|-----|
| | | | | 300 | 350 | 400 | 450 | 500 | 550 | 600 | 650 | 700 | 750 | 800 |
| | | | | Joist Self-Weight - Pounds per Linear Foot (plf) | | | | | | | | | | |
| 120 | 45.0 | 60 | 0.250 | 38 | 46 | 51 | 58 | 62 | 70 | 75 | 84 | 93 | 99 | 100 |
| 120 | 37.5 | 60 | 0.375 | 38 | 46 | 50 | 58 | 62 | 70 | 79 | 83 | 93 | 100 | 101 |
| 120 | 30.0 | 60 | 0.500 | 38 | 51 | 51 | 59 | 66 | 71 | 80 | 84 | 93 | 101 | 101 |
| 120 | 22.5 | 60 | 0.625 | 40 | 51 | 55 | 59 | 67 | 75 | 83 | 83 | 100 | 100 | 117 |
| 120 | 15.0 | 60 | 0.750 | 47 | 51 | 59 | 67 | 75 | 84 | 84 | 103 | 116 | 126 | 126 |
| 120 | 7.5 | 60 | 0.875 | 52 | 60 | 67 | 75 | 85 | 103 | 103 | 127 | 127 | 127 | 150 |
| 120 | 49.5 | 72 | 0.375 | 33 | 38 | 42 | 52 | 53 | 60 | 61 | 68 | 72 | 76 | 86 |
| 120 | 42.0 | 72 | 0.500 | 32 | 38 | 43 | 52 | 52 | 59 | 64 | 68 | 75 | 80 | 84 |
| 120 | 34.5 | 72 | 0.625 | 33 | 37 | 48 | 52 | 56 | 60 | 64 | 68 | 75 | 81 | 84 |
| 120 | 27.0 | 72 | 0.750 | 35 | 40 | 52 | 52 | 60 | 60 | 67 | 75 | 80 | 85 | 94 |
| 120 | 19.5 | 72 | 0.875 | 37 | 42 | 52 | 52 | 60 | 68 | 72 | 82 | 85 | 95 | 104 |
| 120 | 12.0 | 72 | 1.000 | 40 | 52 | 52 | 59 | 68 | 72 | 82 | 86 | 104 | 104 | 117 |
| 120 | 54.0 | 84 | 0.500 | 30 | 34 | 39 | 43 | 49 | 54 | 58 | 62 | 65 | 69 | 73 |
| 120 | 46.5 | 84 | 0.625 | 30 | 34 | 39 | 42 | 48 | 53 | 57 | 62 | 65 | 70 | 73 |
| 120 | 39.0 | 84 | 0.750 | 30 | 36 | 38 | 44 | 52 | 54 | 57 | 61 | 65 | 72 | 76 |
| 120 | 31.5 | 84 | 0.875 | 31 | 36 | 40 | 49 | 53 | 53 | 61 | 65 | 69 | 73 | 76 |
| 120 | 24.0 | 84 | 1.000 | 33 | 38 | 41 | 53 | 53 | 57 | 60 | 69 | 73 | 76 | 82 |
| 120 | 9.0 | 84 | 1.250 | 38 | 43 | 53 | 57 | 61 | 68 | 77 | 81 | 86 | 103 | 103 |
| 120 | 58.5 | 96 | 0.625 | 29 | 32 | 37 | 40 | 44 | 50 | 54 | 56 | 60 | 63 | 68 |
| 120 | 51.0 | 96 | 0.750 | 29 | 32 | 36 | 40 | 44 | 50 | 55 | 58 | 59 | 66 | 67 |
| 120 | 43.5 | 96 | 0.875 | 29 | 32 | 38 | 40 | 43 | 49 | 55 | 59 | 63 | 66 | 67 |
| 120 | 36.0 | 96 | 1.000 | 29 | 34 | 37 | 40 | 49 | 54 | 55 | 58 | 62 | 65 | 70 |
| 120 | 21.0 | 96 | 1.250 | 31 | 35 | 39 | 44 | 54 | 54 | 58 | 62 | 66 | 69 | 78 |
| 120 | 6.0 | 96 | 1.500 | 36 | 42 | 53 | 53 | 61 | 66 | 68 | 76 | 87 | 87 | 104 |
| 120 | 70.5 | 108 | 0.625 | 30 | 33 | 36 | 39 | 43 | 45 | 50 | 53 | 58 | 62 | 63 |
| 120 | 63.0 | 108 | 0.750 | 30 | 32 | 36 | 39 | 42 | 46 | 51 | 52 | 58 | 60 | 62 |
| 120 | 55.5 | 108 | 0.875 | 30 | 32 | 35 | 40 | 43 | 46 | 51 | 57 | 57 | 61 | 65 |
| 120 | 48.0 | 108 | 1.000 | 29 | 31 | 36 | 40 | 43 | 48 | 51 | 56 | 59 | 60 | 65 |
| 120 | 33.0 | 108 | 1.250 | 29 | 32 | 35 | 39 | 44 | 50 | 55 | 56 | 60 | 64 | 66 |
| 120 | 18.0 | 108 | 1.500 | 30 | 34 | 37 | 43 | 50 | 55 | 55 | 59 | 63 | 67 | 71 |
| 120 | 82.5 | 120 | 0.625 | 32 | 35 | 36 | 39 | 42 | 45 | 51 | 53 | 55 | 60 | 63 |
| 120 | 75.0 | 120 | 0.750 | 32 | 33 | 36 | 39 | 41 | 45 | 51 | 52 | 55 | 62 | 63 |
| 120 | 67.5 | 120 | 0.875 | 31 | 34 | 36 | 38 | 41 | 45 | 50 | 53 | 54 | 62 | 63 |
| 120 | 60.0 | 120 | 1.000 | 31 | 32 | 35 | 39 | 41 | 44 | 51 | 53 | 54 | 62 | 62 |
| 120 | 45.0 | 120 | 1.250 | 30 | 32 | 35 | 38 | 41 | 45 | 50 | 52 | 57 | 61 | 61 |
| 120 | 30.0 | 120 | 1.500 | 30 | 32 | 36 | 39 | 42 | 45 | 51 | 56 | 57 | 60 | 65 |
| 120 | 87.0 | 132 | 0.750 | 34 | 36 | 38 | 42 | 42 | 45 | 49 | 52 | 55 | 58 | 61 |
| 120 | 79.5 | 132 | 0.875 | 34 | 35 | 37 | 39 | 41 | 44 | 48 | 53 | 55 | 57 | 60 |
| 120 | 72.0 | 132 | 1.000 | 34 | 35 | 37 | 40 | 41 | 44 | 47 | 52 | 55 | 57 | 65 |
| 120 | 57.0 | 132 | 1.250 | 32 | 34 | 36 | 41 | 41 | 44 | 47 | 53 | 55 | 56 | 63 |
| 120 | 42.0 | 132 | 1.500 | 31 | 33 | 34 | 38 | 40 | 45 | 49 | 51 | 55 | 59 | 63 |
| 120 | 12.0 | 132 | 2.000 | 31 | 34 | 37 | 41 | 46 | 51 | 57 | 58 | 61 | 66 | 69 |
| 120 | 99.0 | 144 | 0.750 | 38 | 39 | 41 | 44 | 45 | 48 | 50 | 56 | 57 | 58 | 63 |
| 120 | 91.5 | 144 | 0.875 | 37 | 38 | 40 | 43 | 43 | 46 | 50 | 54 | 56 | 57 | 59 |
| 120 | 84.0 | 144 | 1.000 | 36 | 37 | 40 | 42 | 43 | 46 | 49 | 53 | 55 | 57 | 62 |
| 120 | 69.0 | 144 | 1.250 | 35 | 36 | 38 | 42 | 42 | 45 | 49 | 52 | 53 | 57 | 59 |
| 120 | 54.0 | 144 | 1.500 | 33 | 35 | 37 | 39 | 41 | 44 | 48 | 51 | 54 | 57 | 60 |
| 120 | 24.0 | 144 | 2.000 | 31 | 33 | 36 | 40 | 41 | 45 | 52 | 53 | 54 | 60 | 63 |
| 120 | 111.0 | 156 | 0.750 | 42 | 43 | 46 | 47 | 47 | 50 | 53 | 57 | 60 | 62 | 62 |
| 120 | 103.5 | 156 | 0.875 | 40 | 41 | 44 | 46 | 46 | 50 | 54 | 56 | 58 | 60 | 64 |
| 120 | 96.0 | 156 | 1.000 | 39 | 42 | 43 | 47 | 47 | 49 | 52 | 56 | 57 | 61 | 61 |
| 120 | 81.0 | 156 | 1.250 | 38 | 39 | 42 | 43 | 43 | 46 | 50 | 54 | 55 | 57 | 61 |
| 120 | 66.0 | 156 | 1.500 | 35 | 38 | 40 | 41 | 43 | 46 | 49 | 54 | 54 | 57 | 60 |
| 120 | 36.0 | 156 | 2.000 | 34 | 36 | 38 | 40 | 42 | 45 | 48 | 52 | 54 | 56 | 61 |
| 120 | 123.0 | 168 | 0.750 | 46 | 46 | 48 | 49 | 52 | 53 | 60 | 61 | 62 | 66 | 68 |
| 120 | 115.5 | 168 | 0.875 | 45 | 45 | 47 | 48 | 50 | 51 | 58 | 59 | 61 | 63 | 66 |
| 120 | 108.0 | 168 | 1.000 | 43 | 44 | 47 | 48 | 48 | 51 | 54 | 58 | 61 | 61 | 63 |
| 120 | 93.0 | 168 | 1.250 | 40 | 43 | 45 | 48 | 48 | 50 | 52 | 58 | 58 | 59 | 63 |
| 120 | 78.0 | 168 | 1.500 | 40 | 41 | 42 | 44 | 45 | 48 | 51 | 56 | 57 | 59 | 60 |
| 120 | 48.0 | 168 | 2.000 | 37 | 38 | 40 | 42 | 43 | 45 | 49 | 55 | 55 | 56 | 58 |

X-Bridging Requirements – Reference Standard Specification Section 904.5 Bridging on page 96

| | | | | | | | | | |
|-------|--------|--------|--------|--------|--------|--------|--------|--------|---------|
| 1 row | 2 rows | 3 rows | 4 rows | 5 rows | 6 rows | 7 rows | 8 rows | 9 rows | 10 rows |
|-------|--------|--------|--------|--------|--------|--------|--------|--------|---------|

Bearing Seat Depth – Profiles to the right of a colored line have a seat depth indicated in the chart below

| | | | |
|------------|-----|-----|--------------|
| Minimum 5" | 7½" | 10" | Maximum 12½" |
|------------|-----|-----|--------------|



Gable Joist (SPGB) Tables

| Span ft | End Depth in | Center Depth in | Top Chord Pitch in/ft | Top Chord Uniform Load - Pounds per Linear Foot (plf) (ASD) | | | | | | | | | | |
|---------|--------------|-----------------|-----------------------|---|-----|-----|-----|-----|-----|-----|-----|-----|-----|-----|
| | | | | 300 | 350 | 400 | 450 | 500 | 550 | 600 | 650 | 700 | 750 | 800 |
| | | | | Joist Self-Weight - Pounds per Linear Foot (plf) | | | | | | | | | | |
| 130 | 49.8 | 66 | 0.250 | 40 | 51 | 55 | 59 | 67 | 74 | 80 | 84 | 92 | 101 | 114 |
| 130 | 41.6 | 66 | 0.375 | 40 | 51 | 55 | 60 | 67 | 73 | 79 | 84 | 100 | 101 | 114 |
| 130 | 33.5 | 66 | 0.500 | 40 | 51 | 55 | 59 | 66 | 74 | 83 | 84 | 101 | 101 | 113 |
| 130 | 25.4 | 66 | 0.625 | 47 | 51 | 59 | 66 | 71 | 80 | 84 | 102 | 102 | 114 | 123 |
| 130 | 17.3 | 66 | 0.750 | 51 | 56 | 59 | 67 | 82 | 84 | 103 | 103 | 117 | 125 | 125 |
| 130 | 9.1 | 66 | 0.875 | 51 | 59 | 67 | 80 | 85 | 103 | 120 | 127 | 127 | 140 | 149 |
| 130 | 53.6 | 78 | 0.375 | 36 | 41 | 48 | 53 | 57 | 61 | 69 | 72 | 80 | 85 | 86 |
| 130 | 45.5 | 78 | 0.500 | 36 | 41 | 52 | 53 | 60 | 65 | 68 | 75 | 80 | 86 | 94 |
| 130 | 37.4 | 78 | 0.625 | 36 | 41 | 52 | 53 | 60 | 65 | 68 | 76 | 85 | 85 | 102 |
| 130 | 29.3 | 78 | 0.750 | 37 | 42 | 52 | 56 | 60 | 68 | 76 | 81 | 85 | 95 | 102 |
| 130 | 21.1 | 78 | 0.875 | 40 | 52 | 53 | 60 | 65 | 72 | 80 | 86 | 96 | 103 | 103 |
| 130 | 13.0 | 78 | 1.000 | 43 | 52 | 60 | 64 | 73 | 81 | 86 | 104 | 104 | 118 | 126 |
| 130 | 57.5 | 90 | 0.500 | 34 | 38 | 43 | 49 | 54 | 58 | 62 | 66 | 70 | 74 | 82 |
| 130 | 49.4 | 90 | 0.625 | 33 | 38 | 42 | 49 | 54 | 58 | 63 | 65 | 72 | 76 | 81 |
| 130 | 41.3 | 90 | 0.750 | 33 | 39 | 42 | 53 | 53 | 58 | 62 | 69 | 73 | 77 | 82 |
| 130 | 33.1 | 90 | 0.875 | 33 | 38 | 44 | 53 | 54 | 61 | 66 | 69 | 77 | 82 | 86 |
| 130 | 25.0 | 90 | 1.000 | 36 | 42 | 48 | 53 | 58 | 61 | 69 | 73 | 82 | 87 | 95 |
| 130 | 8.8 | 90 | 1.250 | 41 | 53 | 53 | 61 | 68 | 76 | 82 | 85 | 104 | 104 | 116 |
| 130 | 69.5 | 102 | 0.500 | 32 | 36 | 40 | 43 | 50 | 56 | 59 | 60 | 67 | 68 | 75 |
| 130 | 61.4 | 102 | 0.625 | 31 | 36 | 40 | 44 | 50 | 56 | 59 | 60 | 68 | 68 | 74 |
| 130 | 53.3 | 102 | 0.750 | 32 | 36 | 40 | 44 | 50 | 56 | 59 | 63 | 67 | 71 | 75 |
| 130 | 45.1 | 102 | 0.875 | 32 | 36 | 40 | 44 | 49 | 55 | 59 | 63 | 67 | 71 | 74 |
| 130 | 37.0 | 102 | 1.000 | 31 | 37 | 40 | 50 | 54 | 55 | 58 | 66 | 70 | 73 | 78 |
| 130 | 20.8 | 102 | 1.250 | 33 | 39 | 43 | 54 | 54 | 62 | 65 | 69 | 74 | 83 | 87 |
| 130 | 73.4 | 114 | 0.625 | 34 | 36 | 40 | 43 | 49 | 52 | 58 | 61 | 62 | 69 | 70 |
| 130 | 65.3 | 114 | 0.750 | 32 | 36 | 39 | 43 | 50 | 52 | 58 | 61 | 62 | 68 | 70 |
| 130 | 57.1 | 114 | 0.875 | 32 | 35 | 39 | 44 | 50 | 51 | 57 | 60 | 62 | 68 | 70 |
| 130 | 49.0 | 114 | 1.000 | 31 | 35 | 40 | 44 | 49 | 51 | 57 | 60 | 65 | 68 | 70 |
| 130 | 32.8 | 114 | 1.250 | 32 | 36 | 39 | 44 | 50 | 55 | 59 | 64 | 68 | 71 | 75 |
| 130 | 16.5 | 114 | 1.500 | 33 | 37 | 43 | 50 | 55 | 60 | 63 | 68 | 71 | 79 | 84 |
| 130 | 85.4 | 126 | 0.625 | 35 | 37 | 40 | 43 | 47 | 52 | 54 | 57 | 63 | 66 | 68 |
| 130 | 77.3 | 126 | 0.750 | 34 | 37 | 39 | 43 | 46 | 51 | 53 | 55 | 63 | 64 | 67 |
| 130 | 69.1 | 126 | 0.875 | 34 | 36 | 39 | 42 | 46 | 52 | 54 | 60 | 63 | 65 | 67 |
| 130 | 61.0 | 126 | 1.000 | 33 | 35 | 39 | 43 | 46 | 52 | 53 | 59 | 62 | 63 | 70 |
| 130 | 44.8 | 126 | 1.250 | 32 | 36 | 39 | 42 | 46 | 52 | 57 | 61 | 62 | 69 | 69 |
| 130 | 28.5 | 126 | 1.500 | 32 | 36 | 39 | 42 | 49 | 52 | 57 | 61 | 65 | 68 | 72 |
| 130 | 89.3 | 138 | 0.750 | 37 | 38 | 41 | 43 | 47 | 52 | 54 | 56 | 61 | 66 | 67 |
| 130 | 81.1 | 138 | 0.875 | 36 | 38 | 40 | 42 | 46 | 52 | 53 | 55 | 60 | 65 | 66 |
| 130 | 73.0 | 138 | 1.000 | 36 | 37 | 40 | 43 | 47 | 52 | 54 | 57 | 58 | 65 | 65 |
| 130 | 56.8 | 138 | 1.250 | 34 | 36 | 39 | 42 | 46 | 50 | 53 | 56 | 63 | 64 | 65 |
| 130 | 40.5 | 138 | 1.500 | 33 | 34 | 40 | 43 | 46 | 51 | 54 | 59 | 64 | 64 | 71 |
| 130 | 8.0 | 138 | 2.000 | 33 | 38 | 43 | 48 | 57 | 58 | 61 | 66 | 73 | 77 | 80 |
| 130 | 101.3 | 150 | 0.750 | 40 | 43 | 44 | 46 | 49 | 55 | 55 | 58 | 61 | 66 | 71 |
| 130 | 93.1 | 150 | 0.875 | 40 | 41 | 44 | 45 | 50 | 53 | 55 | 57 | 62 | 65 | 69 |
| 130 | 85.0 | 150 | 1.000 | 38 | 41 | 42 | 45 | 47 | 55 | 55 | 56 | 58 | 63 | 69 |
| 130 | 68.8 | 150 | 1.250 | 37 | 39 | 41 | 43 | 47 | 52 | 54 | 57 | 60 | 66 | 67 |
| 130 | 52.5 | 150 | 1.500 | 35 | 38 | 40 | 43 | 46 | 51 | 53 | 55 | 60 | 65 | 67 |
| 130 | 20.0 | 150 | 2.000 | 34 | 36 | 39 | 43 | 47 | 52 | 55 | 60 | 63 | 64 | 70 |
| 130 | 113.3 | 162 | 0.750 | 44 | 47 | 48 | 49 | 51 | 55 | 60 | 61 | 64 | 69 | 70 |
| 130 | 105.1 | 162 | 0.875 | 42 | 45 | 47 | 48 | 50 | 53 | 58 | 59 | 62 | 66 | 69 |
| 130 | 97.0 | 162 | 1.000 | 43 | 43 | 46 | 47 | 50 | 54 | 56 | 59 | 61 | 65 | 67 |
| 130 | 80.8 | 162 | 1.250 | 40 | 42 | 44 | 45 | 48 | 51 | 55 | 56 | 60 | 62 | 67 |
| 130 | 64.5 | 162 | 1.500 | 38 | 40 | 41 | 44 | 48 | 53 | 54 | 56 | 59 | 63 | 67 |
| 130 | 32.0 | 162 | 2.000 | 36 | 37 | 40 | 43 | 48 | 53 | 55 | 57 | 62 | 65 | 67 |
| 130 | 125.3 | 174 | 0.750 | 48 | 49 | 49 | 51 | 54 | 57 | 63 | 64 | 66 | 71 | 72 |
| 130 | 117.1 | 174 | 0.875 | 45 | 49 | 49 | 49 | 53 | 58 | 60 | 63 | 64 | 68 | 70 |
| 130 | 109.0 | 174 | 1.000 | 44 | 47 | 48 | 50 | 52 | 57 | 60 | 61 | 63 | 67 | 69 |
| 130 | 92.8 | 174 | 1.250 | 42 | 45 | 45 | 48 | 51 | 56 | 57 | 60 | 61 | 64 | 69 |
| 130 | 76.5 | 174 | 1.500 | 42 | 43 | 46 | 47 | 50 | 53 | 58 | 58 | 61 | 64 | 68 |
| 130 | 44.0 | 174 | 2.000 | 38 | 40 | 42 | 44 | 48 | 53 | 55 | 55 | 60 | 62 | 68 |

X-Bridging Requirements – Reference Standard Specification Section 904.5 Bridging on page 96

| | | | | | | | | | |
|-------|--------|--------|--------|--------|--------|--------|--------|--------|---------|
| 1 row | 2 rows | 3 rows | 4 rows | 5 rows | 6 rows | 7 rows | 8 rows | 9 rows | 10 rows |
|-------|--------|--------|--------|--------|--------|--------|--------|--------|---------|

Bearing Seat Depth – Profiles to the right of a colored line have a seat depth indicated in the chart below

| | | | |
|------------|-----|-----|--------------|
| Minimum 5" | 7½" | 10" | Maximum 12½" |
|------------|-----|-----|--------------|

Gable Joist (SPGB) Tables

| Span ft | End Depth in | Center Depth in | Top Chord Pitch in/ft | Top Chord Uniform Load - Pounds per Linear Foot (plf) (ASD) | | | | | | | | | | |
|------------|--------------------|-----------------------|--------------------------------|---|-----|-----|-----|-----|-----|-----|-----|-----|-----|-----|
| | | | | 300 | 350 | 400 | 450 | 500 | 550 | 600 | 650 | 700 | 750 | 800 |
| | | | | Joist Self-Weight - Pounds per Linear Foot (plf) | | | | | | | | | | |
| 140 | 52.5 | 70 | 0.250 | 48 | 52 | 59 | 67 | 74 | 79 | 94 | 101 | 101 | 114 | 123 |
| 140 | 43.8 | 70 | 0.375 | 47 | 51 | 59 | 67 | 74 | 79 | 93 | 101 | 101 | 113 | 123 |
| 140 | 35.0 | 70 | 0.500 | 51 | 52 | 59 | 66 | 74 | 85 | 94 | 101 | 113 | 123 | 123 |
| 140 | 26.3 | 70 | 0.625 | 51 | 55 | 63 | 71 | 80 | 85 | 102 | 102 | 125 | 125 | 126 |
| 140 | 17.5 | 70 | 0.750 | 52 | 59 | 67 | 75 | 85 | 103 | 103 | 126 | 127 | 127 | 150 |
| 140 | 8.8 | 70 | 0.875 | 59 | 67 | 81 | 85 | 102 | 115 | 126 | 127 | 148 | 148 | 172 |
| 140 | 55.8 | 82 | 0.375 | 39 | 48 | 53 | 57 | 62 | 69 | 76 | 81 | 86 | 93 | 102 |
| 140 | 47.0 | 82 | 0.500 | 38 | 48 | 53 | 57 | 64 | 69 | 76 | 81 | 86 | 101 | 101 |
| 140 | 38.3 | 82 | 0.625 | 41 | 52 | 53 | 60 | 65 | 72 | 79 | 84 | 95 | 102 | 102 |
| 140 | 29.5 | 82 | 0.750 | 41 | 52 | 56 | 61 | 68 | 75 | 81 | 85 | 102 | 102 | 116 |
| 140 | 20.8 | 82 | 0.875 | 47 | 53 | 60 | 67 | 72 | 81 | 85 | 103 | 103 | 116 | 126 |
| 140 | 12.0 | 82 | 1.000 | 52 | 57 | 64 | 72 | 82 | 86 | 104 | 119 | 126 | 126 | 128 |
| 140 | 67.8 | 94 | 0.375 | 36 | 41 | 50 | 54 | 59 | 63 | 66 | 74 | 78 | 83 | 88 |
| 140 | 59.0 | 94 | 0.500 | 37 | 41 | 49 | 54 | 58 | 63 | 66 | 73 | 78 | 83 | 88 |
| 140 | 50.3 | 94 | 0.625 | 37 | 42 | 49 | 54 | 58 | 63 | 69 | 73 | 80 | 85 | 95 |
| 140 | 41.5 | 94 | 0.750 | 37 | 42 | 53 | 54 | 62 | 65 | 70 | 77 | 82 | 86 | 95 |
| 140 | 32.8 | 94 | 0.875 | 38 | 44 | 53 | 54 | 61 | 68 | 73 | 77 | 87 | 94 | 103 |
| 140 | 24.0 | 94 | 1.000 | 39 | 48 | 52 | 62 | 65 | 69 | 76 | 81 | 86 | 104 | 104 |
| 140 | 71.0 | 106 | 0.500 | 35 | 40 | 44 | 51 | 56 | 60 | 64 | 68 | 75 | 76 | 83 |
| 140 | 62.3 | 106 | 0.625 | 36 | 40 | 44 | 50 | 56 | 60 | 64 | 67 | 74 | 76 | 83 |
| 140 | 53.5 | 106 | 0.750 | 35 | 40 | 44 | 50 | 56 | 60 | 64 | 67 | 75 | 79 | 84 |
| 140 | 44.8 | 106 | 0.875 | 35 | 40 | 44 | 54 | 55 | 60 | 66 | 70 | 74 | 79 | 83 |
| 140 | 36.0 | 106 | 1.000 | 35 | 40 | 49 | 54 | 58 | 62 | 67 | 71 | 78 | 82 | 88 |
| 140 | 18.5 | 106 | 1.250 | 40 | 44 | 54 | 58 | 62 | 69 | 74 | 83 | 87 | 98 | 105 |
| 140 | 74.3 | 118 | 0.625 | 35 | 40 | 43 | 51 | 53 | 59 | 62 | 63 | 70 | 73 | 78 |
| 140 | 65.5 | 118 | 0.750 | 35 | 39 | 43 | 50 | 52 | 58 | 62 | 66 | 70 | 72 | 78 |
| 140 | 56.8 | 118 | 0.875 | 35 | 39 | 43 | 50 | 52 | 58 | 61 | 68 | 69 | 75 | 77 |
| 140 | 48.0 | 118 | 1.000 | 35 | 40 | 44 | 50 | 56 | 57 | 61 | 67 | 69 | 75 | 77 |
| 140 | 30.5 | 118 | 1.250 | 35 | 40 | 44 | 51 | 56 | 59 | 64 | 68 | 76 | 78 | 84 |
| 140 | 13.0 | 118 | 1.500 | 38 | 43 | 55 | 55 | 63 | 67 | 71 | 78 | 83 | 89 | 105 |
| 140 | 86.3 | 130 | 0.625 | 37 | 41 | 44 | 47 | 53 | 55 | 62 | 65 | 67 | 73 | 76 |
| 140 | 77.5 | 130 | 0.750 | 37 | 39 | 43 | 47 | 53 | 55 | 61 | 64 | 66 | 72 | 76 |
| 140 | 68.8 | 130 | 0.875 | 36 | 39 | 43 | 47 | 52 | 54 | 61 | 64 | 66 | 72 | 76 |
| 140 | 60.0 | 130 | 1.000 | 35 | 39 | 43 | 47 | 52 | 54 | 62 | 63 | 70 | 72 | 74 |
| 140 | 42.5 | 130 | 1.250 | 34 | 39 | 42 | 47 | 53 | 58 | 62 | 62 | 69 | 71 | 77 |
| 140 | 25.0 | 130 | 1.500 | 35 | 40 | 44 | 51 | 57 | 61 | 64 | 68 | 73 | 75 | 80 |
| 140 | 98.3 | 142 | 0.625 | 40 | 42 | 45 | 48 | 54 | 56 | 59 | 66 | 68 | 72 | 73 |
| 140 | 89.5 | 142 | 0.750 | 39 | 41 | 43 | 47 | 53 | 56 | 58 | 65 | 67 | 71 | 75 |
| 140 | 80.8 | 142 | 0.875 | 38 | 40 | 43 | 48 | 53 | 55 | 57 | 65 | 66 | 70 | 74 |
| 140 | 72.0 | 142 | 1.000 | 37 | 39 | 43 | 47 | 52 | 55 | 57 | 64 | 66 | 69 | 74 |
| 140 | 54.5 | 142 | 1.250 | 36 | 39 | 42 | 46 | 53 | 55 | 60 | 64 | 65 | 72 | 73 |
| 140 | 37.0 | 142 | 1.500 | 35 | 39 | 43 | 47 | 51 | 54 | 63 | 63 | 70 | 71 | 78 |
| 140 | 101.5 | 154 | 0.750 | 43 | 44 | 46 | 49 | 57 | 57 | 60 | 64 | 67 | 73 | 75 |
| 140 | 92.8 | 154 | 0.875 | 41 | 42 | 45 | 49 | 54 | 56 | 58 | 64 | 69 | 72 | 73 |
| 140 | 84.0 | 154 | 1.000 | 40 | 42 | 45 | 48 | 54 | 55 | 58 | 63 | 68 | 72 | 73 |
| 140 | 66.5 | 154 | 1.250 | 39 | 40 | 43 | 47 | 52 | 55 | 58 | 62 | 67 | 70 | 71 |
| 140 | 49.0 | 154 | 1.500 | 37 | 39 | 43 | 46 | 52 | 54 | 57 | 65 | 66 | 69 | 74 |
| 140 | 14.0 | 154 | 2.000 | 36 | 41 | 45 | 48 | 54 | 59 | 62 | 67 | 71 | 76 | 80 |
| 140 | 113.5 | 166 | 0.750 | 46 | 48 | 49 | 51 | 57 | 59 | 62 | 66 | 70 | 71 | 77 |
| 140 | 104.8 | 166 | 0.875 | 45 | 46 | 48 | 51 | 55 | 57 | 60 | 63 | 68 | 70 | 76 |
| 140 | 96.0 | 166 | 1.000 | 43 | 46 | 48 | 50 | 55 | 58 | 59 | 65 | 67 | 75 | 76 |
| 140 | 78.5 | 166 | 1.250 | 42 | 44 | 45 | 48 | 53 | 56 | 58 | 60 | 65 | 71 | 74 |
| 140 | 61.0 | 166 | 1.500 | 40 | 42 | 44 | 48 | 55 | 55 | 58 | 61 | 68 | 70 | 72 |
| 140 | 26.0 | 166 | 2.000 | 37 | 41 | 44 | 47 | 54 | 56 | 62 | 65 | 67 | 73 | 75 |
| 140 | 125.5 | 178 | 0.750 | 50 | 52 | 55 | 56 | 61 | 65 | 66 | 71 | 73 | 77 | 80 |
| 140 | 116.8 | 178 | 0.875 | 48 | 50 | 52 | 54 | 57 | 62 | 65 | 66 | 72 | 72 | 79 |
| 140 | 108.0 | 178 | 1.000 | 46 | 49 | 50 | 52 | 59 | 61 | 63 | 68 | 70 | 71 | 78 |
| 140 | 90.5 | 178 | 1.250 | 44 | 46 | 50 | 51 | 57 | 59 | 60 | 65 | 66 | 72 | 76 |
| 140 | 73.0 | 178 | 1.500 | 43 | 45 | 47 | 50 | 54 | 57 | 60 | 63 | 67 | 69 | 74 |
| 140 | 38.0 | 178 | 2.000 | 39 | 42 | 44 | 48 | 54 | 55 | 58 | 63 | 68 | 71 | 73 |

X-Bridging Requirements – Reference Standard Specification Section 904.5 Bridging on page 96

| | | | | | | | | | |
|-------|--------|--------|--------|--------|--------|--------|--------|--------|---------|
| 1 row | 2 rows | 3 rows | 4 rows | 5 rows | 6 rows | 7 rows | 8 rows | 9 rows | 10 rows |
|-------|--------|--------|--------|--------|--------|--------|--------|--------|---------|

Bearing Seat Depth – Profiles to the right of a colored line have a seat depth indicated in the chart below

| | | | |
|------------|-----|-----|--------------|
| Minimum 5" | 7½" | 10" | Maximum 12½" |
|------------|-----|-----|--------------|



Gable Joist (SPGB) Tables

| Span ft | End Depth in | Center Depth in | Top Chord Pitch in/ft | Top Chord Uniform Load - Pounds per Linear Foot (plf) (ASD) | | | | | | | | | | |
|------------|--------------------|-----------------------|--------------------------------|---|-----|-----|-----|-----|-----|-----|-----|-----|-----|-----|
| | | | | 300 | 350 | 400 | 450 | 500 | 550 | 600 | 650 | 700 | 750 | 800 |
| | | | | Joist Self-Weight - Pounds per Linear Foot (plf) | | | | | | | | | | |
| 150 | 57.3 | 76 | 0.250 | 48 | 56 | 61 | 68 | 75 | 84 | 93 | 101 | 115 | 123 | 124 |
| 150 | 47.9 | 76 | 0.375 | 51 | 56 | 60 | 68 | 76 | 84 | 93 | 102 | 113 | 123 | 123 |
| 150 | 38.5 | 76 | 0.500 | 51 | 56 | 63 | 70 | 80 | 84 | 100 | 101 | 123 | 123 | 126 |
| 150 | 29.1 | 76 | 0.625 | 52 | 59 | 67 | 76 | 85 | 94 | 102 | 115 | 125 | 126 | 136 |
| 150 | 19.8 | 76 | 0.750 | 56 | 64 | 71 | 80 | 96 | 103 | 116 | 127 | 127 | 139 | 149 |
| 150 | 10.4 | 76 | 0.875 | 59 | 71 | 85 | 96 | 103 | 125 | 125 | 125 | 150 | 150 | 172 |
| 150 | 57.9 | 86 | 0.375 | 42 | 53 | 57 | 62 | 70 | 77 | 81 | 85 | 102 | 103 | 114 |
| 150 | 48.5 | 86 | 0.500 | 42 | 53 | 57 | 65 | 69 | 77 | 84 | 95 | 103 | 103 | 114 |
| 150 | 39.1 | 86 | 0.625 | 47 | 53 | 60 | 64 | 73 | 81 | 86 | 102 | 103 | 115 | 125 |
| 150 | 29.8 | 86 | 0.750 | 47 | 53 | 61 | 68 | 75 | 86 | 95 | 103 | 116 | 127 | 127 |
| 150 | 20.4 | 86 | 0.875 | 52 | 56 | 64 | 72 | 82 | 85 | 104 | 115 | 127 | 127 | 127 |
| 150 | 11.0 | 86 | 1.000 | 56 | 64 | 72 | 81 | 97 | 104 | 117 | 126 | 127 | 142 | 150 |
| 150 | 67.9 | 96 | 0.375 | 40 | 50 | 55 | 58 | 63 | 70 | 74 | 82 | 87 | 95 | 103 |
| 150 | 58.5 | 96 | 0.500 | 40 | 49 | 55 | 58 | 65 | 70 | 73 | 82 | 87 | 95 | 104 |
| 150 | 49.1 | 96 | 0.625 | 39 | 49 | 54 | 58 | 66 | 70 | 77 | 81 | 87 | 102 | 103 |
| 150 | 39.8 | 96 | 0.750 | 42 | 53 | 54 | 61 | 65 | 72 | 82 | 86 | 95 | 103 | 104 |
| 150 | 30.4 | 96 | 0.875 | 41 | 54 | 56 | 61 | 69 | 77 | 82 | 87 | 103 | 103 | 114 |
| 150 | 21.0 | 96 | 1.000 | 48 | 53 | 61 | 69 | 73 | 83 | 87 | 103 | 103 | 117 | 128 |
| 150 | 68.5 | 106 | 0.500 | 40 | 45 | 51 | 56 | 60 | 67 | 72 | 75 | 83 | 84 | 97 |
| 150 | 59.1 | 106 | 0.625 | 39 | 44 | 51 | 56 | 59 | 66 | 71 | 74 | 83 | 88 | 96 |
| 150 | 49.8 | 106 | 0.750 | 39 | 44 | 55 | 56 | 63 | 66 | 74 | 78 | 83 | 87 | 97 |
| 150 | 40.4 | 106 | 0.875 | 40 | 49 | 55 | 58 | 63 | 66 | 73 | 83 | 87 | 96 | 104 |
| 150 | 31.0 | 106 | 1.000 | 39 | 50 | 54 | 58 | 66 | 70 | 78 | 83 | 87 | 104 | 104 |
| 150 | 12.3 | 106 | 1.250 | 49 | 53 | 61 | 69 | 77 | 82 | 87 | 104 | 104 | 118 | 127 |
| 150 | 78.5 | 116 | 0.500 | 39 | 43 | 50 | 53 | 58 | 62 | 69 | 70 | 77 | 82 | 86 |
| 150 | 69.1 | 116 | 0.625 | 38 | 42 | 50 | 57 | 60 | 61 | 69 | 73 | 77 | 84 | 86 |
| 150 | 59.8 | 116 | 0.750 | 38 | 42 | 50 | 57 | 61 | 64 | 68 | 74 | 76 | 85 | 85 |
| 150 | 50.4 | 116 | 0.875 | 38 | 43 | 50 | 56 | 60 | 64 | 68 | 74 | 79 | 84 | 89 |
| 150 | 41.0 | 116 | 1.000 | 38 | 44 | 50 | 55 | 60 | 65 | 71 | 75 | 84 | 88 | 97 |
| 150 | 22.3 | 116 | 1.250 | 40 | 50 | 55 | 59 | 63 | 70 | 75 | 84 | 88 | 99 | 105 |
| 150 | 79.1 | 126 | 0.625 | 38 | 44 | 47 | 52 | 59 | 63 | 64 | 72 | 74 | 79 | 84 |
| 150 | 69.8 | 126 | 0.750 | 38 | 43 | 47 | 53 | 59 | 63 | 64 | 71 | 74 | 79 | 86 |
| 150 | 60.4 | 126 | 0.875 | 39 | 42 | 47 | 52 | 58 | 62 | 67 | 70 | 76 | 78 | 85 |
| 150 | 51.0 | 126 | 1.000 | 39 | 42 | 47 | 52 | 58 | 62 | 68 | 70 | 76 | 81 | 85 |
| 150 | 32.3 | 126 | 1.250 | 39 | 43 | 51 | 56 | 59 | 65 | 68 | 75 | 80 | 83 | 89 |
| 150 | 13.5 | 126 | 1.500 | 40 | 51 | 56 | 59 | 68 | 71 | 79 | 84 | 90 | 106 | 107 |
| 150 | 89.1 | 136 | 0.625 | 40 | 44 | 48 | 52 | 56 | 64 | 65 | 69 | 73 | 77 | 82 |
| 150 | 79.8 | 136 | 0.750 | 39 | 43 | 47 | 53 | 55 | 63 | 65 | 68 | 73 | 76 | 82 |
| 150 | 70.4 | 136 | 0.875 | 39 | 42 | 47 | 53 | 55 | 63 | 65 | 70 | 73 | 75 | 80 |
| 150 | 61.0 | 136 | 1.000 | 39 | 42 | 47 | 53 | 55 | 62 | 64 | 71 | 73 | 79 | 80 |
| 150 | 42.3 | 136 | 1.250 | 38 | 42 | 47 | 53 | 58 | 62 | 67 | 70 | 77 | 78 | 86 |
| 150 | 23.5 | 136 | 1.500 | 38 | 43 | 51 | 57 | 61 | 65 | 69 | 77 | 80 | 86 | 91 |
| 150 | 99.1 | 146 | 0.625 | 40 | 45 | 48 | 56 | 57 | 60 | 67 | 69 | 72 | 79 | 80 |
| 150 | 89.8 | 146 | 0.750 | 41 | 43 | 47 | 54 | 56 | 58 | 66 | 69 | 71 | 78 | 79 |
| 150 | 80.4 | 146 | 0.875 | 40 | 43 | 47 | 53 | 55 | 59 | 65 | 67 | 70 | 78 | 78 |
| 150 | 71.0 | 146 | 1.000 | 39 | 43 | 47 | 53 | 54 | 58 | 64 | 67 | 73 | 77 | 80 |
| 150 | 52.3 | 146 | 1.250 | 38 | 42 | 46 | 53 | 55 | 61 | 64 | 67 | 72 | 77 | 79 |
| 150 | 33.5 | 146 | 1.500 | 37 | 43 | 46 | 54 | 59 | 63 | 63 | 70 | 75 | 79 | 83 |
| 150 | 109.1 | 156 | 0.625 | 44 | 47 | 50 | 55 | 58 | 61 | 66 | 70 | 74 | 75 | 81 |
| 150 | 99.8 | 156 | 0.750 | 43 | 45 | 50 | 53 | 57 | 60 | 65 | 71 | 73 | 75 | 81 |
| 150 | 90.4 | 156 | 0.875 | 41 | 45 | 48 | 55 | 56 | 59 | 64 | 69 | 73 | 76 | 81 |
| 150 | 81.0 | 156 | 1.000 | 41 | 44 | 47 | 53 | 56 | 59 | 68 | 68 | 71 | 77 | 80 |
| 150 | 62.3 | 156 | 1.250 | 40 | 43 | 46 | 53 | 56 | 58 | 65 | 67 | 70 | 78 | 78 |
| 150 | 43.5 | 156 | 1.500 | 38 | 43 | 46 | 52 | 56 | 62 | 65 | 66 | 73 | 75 | 80 |
| 150 | 109.8 | 166 | 0.750 | 44 | 47 | 50 | 57 | 59 | 61 | 67 | 69 | 75 | 79 | 79 |
| 150 | 100.4 | 166 | 0.875 | 44 | 47 | 49 | 54 | 58 | 61 | 66 | 71 | 75 | 76 | 79 |
| 150 | 91.0 | 166 | 1.000 | 43 | 46 | 48 | 52 | 58 | 60 | 66 | 71 | 74 | 75 | 81 |
| 150 | 72.3 | 166 | 1.250 | 42 | 44 | 48 | 54 | 56 | 59 | 63 | 69 | 73 | 74 | 80 |
| 150 | 53.5 | 166 | 1.500 | 40 | 43 | 47 | 51 | 56 | 59 | 66 | 67 | 71 | 75 | 79 |
| 150 | 16.0 | 166 | 2.000 | 40 | 44 | 47 | 55 | 62 | 65 | 69 | 73 | 76 | 81 | 85 |

X-Bridging Requirements – Reference Standard Specification Section 904.5 Bridging on page 96

| | | | | | | | | | |
|-------|--------|--------|--------|--------|--------|--------|--------|--------|---------|
| 1 row | 2 rows | 3 rows | 4 rows | 5 rows | 6 rows | 7 rows | 8 rows | 9 rows | 10 rows |
|-------|--------|--------|--------|--------|--------|--------|--------|--------|---------|

Bearing Seat Depth – Profiles to the right of a colored line have a seat depth indicated in the chart below

| | | | |
|------------|-----|-----|--------------|
| Minimum 5" | 7½" | 10" | Maximum 12½" |
|------------|-----|-----|--------------|