

PROJECT SPOTLIGHT

The Shops at Falmouth Square
Falmouth, ME



Steel Joists
Composite Deck
Roof Deck



NEW MILLENNIUM

A Steel Dynamics Company

PROJECT SPOTLIGHT

The Shops at Falmouth Square
Falmouth, ME

OVERVIEW

Synergy rules in this luxury residential building with refined ground floor shops. Standard floor and roof deck mingle with multiple joists—including flush-frame connections used with high-performance floor joists. Flush-frame was specified for building codes, cost-effectiveness, and added ceiling height in condo units. A brilliant structure in a placid setting.

NEW MILLENNIUM PRODUCTS

- **Steel Joists:**
K-Series, LH-Series, Joist Substitute, and Flush-Frame Connections
- **Composite Deck:**
1.5 Composite Deck
- **Roof Deck:**
B Deck

CUSTOMER/FABRICATOR

Capone Iron Corp.

ERECTOR

ARC Erecting

ARCHITECT

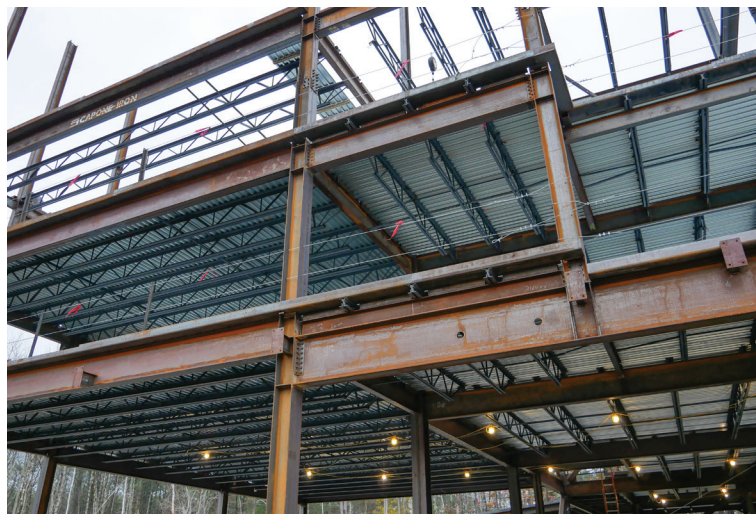
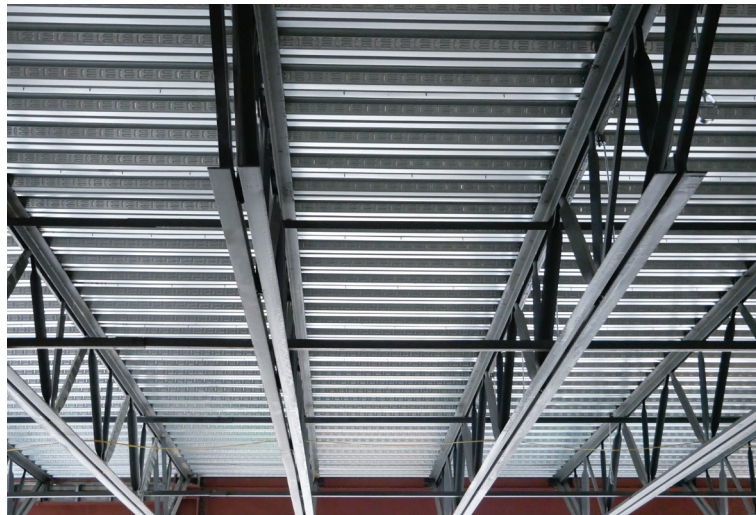
Archetype Architects

ENGINEER OF RECORD

Trillium Engineering Group

GENERAL CONTRACTOR

Penobscot General Construction



Scan for more



newmill.com



NEW MILLENNIUM

A Steel Dynamics Company