



Spot-on Parking Garage Designs

Parking garages at first glance might appear to be simply designed, homogeneous, unoriginal structures, but a closer look reveals much more. Ease and speed of construction; durability and maintenance needs; floor-to-floor and building height; vehicle capacity and maneuverability; aesthetics; user safety and access; lighting, way-signing, and plumbing integration; and more must be considered in the design process. Long-span composite decking meets the challenge.

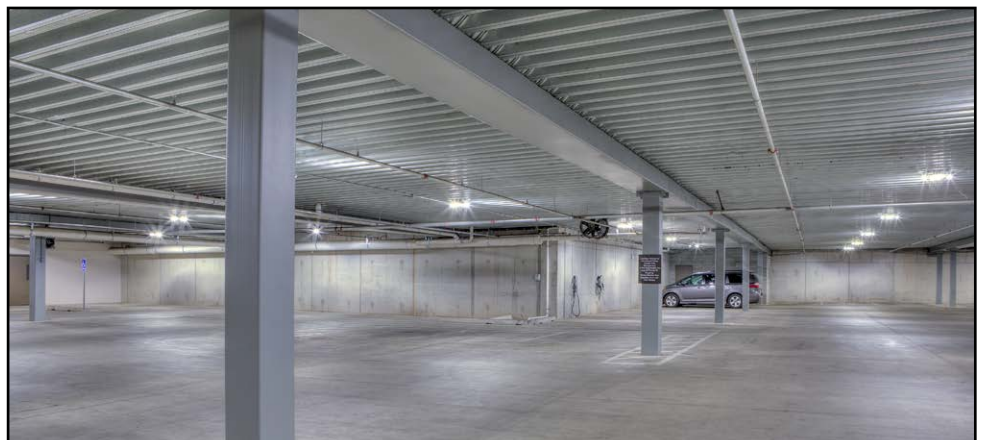
Composite hits the spot

Although pre-cast concrete is a popular choice for parking garages, lighter-weight long-span composite decking offers many advantages. The composite deck serves as stay-in-place formwork during the construction phase while giving the slab tension strength over its service life. The slabs can be integrated with a wide range of structural framing and be erected quickly and efficiently, in all kinds of weather conditions.

Composite decking's strength and rigidity provide design flexibility: Thin-slab floors optimize floor-to-floor and building height; clear spans can reach up to 36'; electrical and plumbing services are integrated efficiently; and weight-bearing walls or structures can be placed at optimized spans that can facilitate up to 4-stall widths. The result is budget-friendly and visually appealing, with clean sightlines, a more open atmosphere, and reflective coating options that brighten the structure.



Versa-Dek® Composite (shown) and Deep-Dek® Composite fit into any support structure: column-supported steel, concrete, or composite beam framework.



Deep-Dek® Composite Deck offers clear span capacities up to 36'.



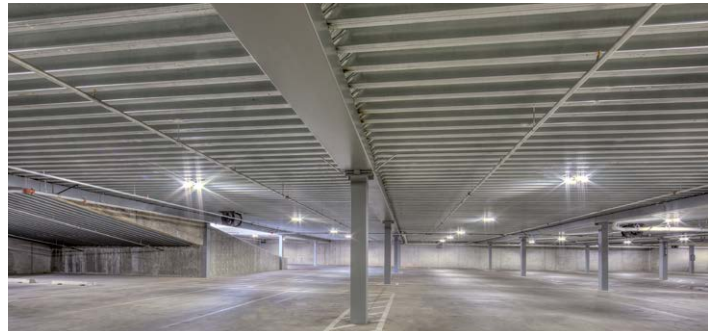
Composite deck results in reduced overall story and facility height thanks to a thin-slab floor design that uses up to 40% less concrete than traditionally poured-in-place concrete floors.

Building a better parking garage

New Millennium offers two composite slab solutions appropriate for parking garages placed in temperate climates where use of de-icing salts is less common: Versa-Dek® and Deep-Dek® Composite floor systems. They have a core of similar benefits, but each also has its own attractive features.

Both floor systems can be paired with a wide range of structural beams and feature a low profile that reduces floor-to-floor and overall structure height; Versa-Dek® Composite 3.5LS provides the thinnest total composite floor depth available. Clear spans up to 36' can be achieved with Deep-Dek® (27' with Versa-Dek®); Deep-Dek® is one of the longest open-span composite floor systems available. Unprotected fire endurance ratings up to 4 hours are attainable with both systems. Plus, both use up to 40% less concrete than traditionally poured-in-place concrete floors.

Contact New Millennium [here](#) for non-composite, stay-in-place form deck solutions for parking garages placed in more severe environments where de-icing salts are commonly used. Sign up to receive future issues of New Millennium Roof-Lines [here](#).



Composite deck allows weight-bearing walls or structures to be placed at spans that can facilitate up to 4-stall widths.



Composite deck can lead to parking garages that are open, bright, and have clean sightlines.



NEW MILLENNIUM
BUILDING SYSTEMS

Build a better steel experience... visit our website for complete information:

www.newmill.com